

Form 874-9 Revised May, 1918
U. S. Department of Agriculture
FOREST SERVICE

N-13

Chippewa NATIONAL FOREST

CORNERS OF THE PUBLIC SURVEY

T. 141 R. 26 5th Mer.

Sec. Corner common to Sections
15, 16, 21, and 22

Corner consists of a _____ (not) in place
State condition _____

Dimensions above ground _____ inches

Sketch grooves, letters, figures, or notches, on proper face or edge.

CARDINAL POSITION

DIAGONAL POSITION

--	--	--	--

N W S E

--	--	--	--

NW SW SE NE

Mound of _____ is located _____

Pits are located _____

Sketch markings of Bearing Trees (or Rocks) in proper box and
fill blanks below, giving bearings from Corner to Trees and
Distances in Links.

<u>B.T</u>			

Species Cedar (stump 18" high)

Diameter 14

Bearing S 17 E (?)

Distance 18' (?)

Do you believe this to be a genuine Land Office Corner? Yes

If not, why? No. See Cor

H. M. K.

(Signature)

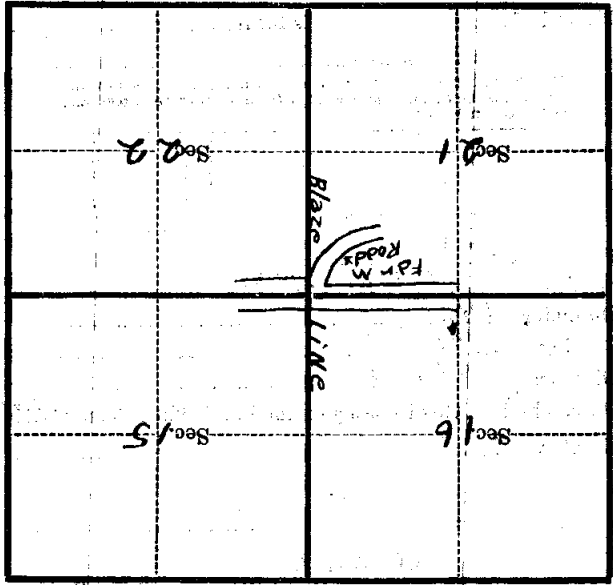
Engineer

(Title)

2/28/35
(Date)

Metal Location Poster is on a _____
 tree _____ inches diameter, on the _____
 side of _____
 from which this Corner bears _____
 chains distant.
 Give any further facts which will aid in finding this
 Corner again.

None



(Make sketch of topography near Corner)

T. 141 R. 26 S. 7th Mer.

Form 874-9—Revised May, 1918
U. S. Department of Agriculture
FOREST SERVICE

N-13

CHIPPEWA NATIONAL FOREST

CORNERS OF THE PUBLIC SURVEY

T. 141 R. 26 5 Mer.
section Corner common to Sections
15, 16, 21, and 22

Corner consists of a _____ (not) in place
State condition _____

Dimensions above ground _____ inches

Sketch grooves, letters, figures, or notches, on proper face or edge.

CARDINAL POSITION

DIAGONAL POSITION

--	--	--	--

N W S E

--	--	--	--

NW SW SE NE

Mound of _____ is located _____

Pits are located _____

Sketch markings of Bearing Trees (or Rocks) in proper box and
fill blanks below, giving bearings from Corner to Trees and
Distances in Links.

--	--	--	--

B.T.			
------	--	--	--

Species Cedar Stump 18" high

Diameter 14

Bearing S 17° E (?)

Distance 18' (?)

Do you believe this to be a genuine Land Office Corner? ~~Yes~~

If not, why? No. Cor. Cor

H.M.K.

(Signature)

Engineer

(Title)

2/28/35

(Date)

Corner again.

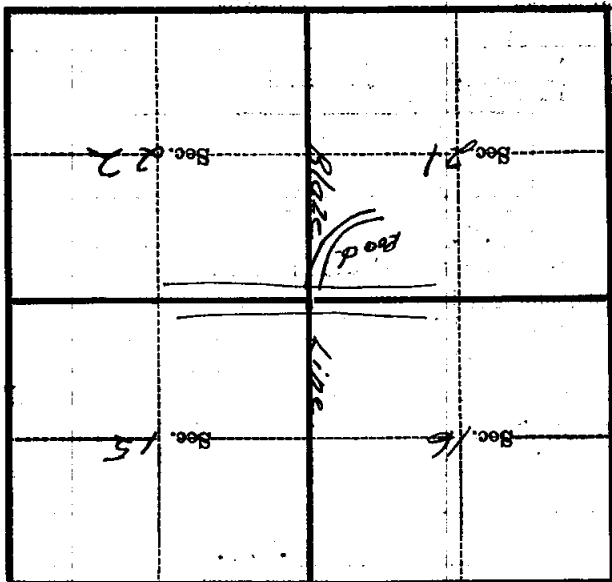
Give any further facts which will aid in finding this chains distant.

from which this Corner bears

side of

tree inches diameter, on the

Metal Location Poster is on a none



(Make sketch of topography near Corner)