

U. S. Department of Agriculture

FOREST SERVICE

J1

CHIPPENAW

NATIONAL FOREST

CORNERS OF THE PUBLIC SURVEY

T. 141 R. 25 5 Mer.

Section

Corner common to Sections

7

and 18

Corner consists of a 2" Pipe (not) in place

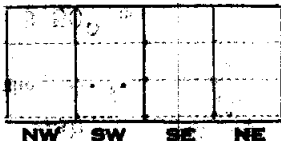
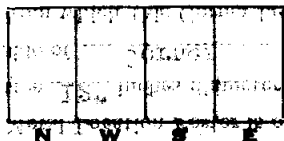
State condition Good

Dimensions above ground 2 1/2 inches

Sketch grooves, letters, figures, or notches, on proper face or edge.

CARDINAL POSITION

DIAGONAL POSITION



Mound of is located

Pits are located

Sketch markings of Bearing Trees (or Rocks) in proper box and fill blanks below, giving bearings from Corner to Trees and Distances in Links.



Species None

Diameter

Bearing

Distance

Do you believe this to be a genuine Land Office Corner? No

If not, why? County Corner

Raymond T. Defant
RAYMOND T. DEFANT

(Signature)

Jr. Civil Engineer

(Title)

1-2-40

(Date)

Section 8
Section 7

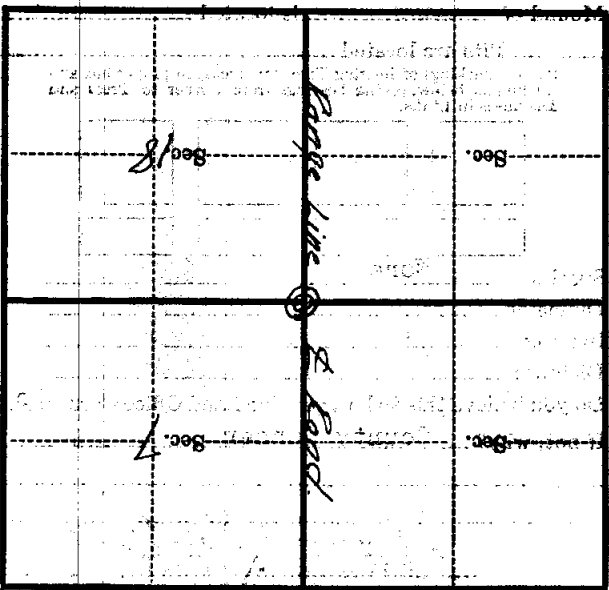
side of road
is
Pipe sets in ditch - east

Corner again.
Give any further facts which will aid in finding this

1.15
chains distant.
from which this Corner bears S 50° E

side of Corner
tree 12" inches diameter, on the N.W.

Metal Location Poster is on a



(Make sketch of topography near Corner)