

U. S. Department of Agriculture
FOREST SERVICE

A-25

Chippewa NATIONAL FOREST

CORNERS OF THE PUBLIC SURVEY

T. 60-61 R. E 6-25 4 Mer.

Section Corner common to Sections

31, 30, 1, and 6
61-25, 61-26, 60-26, and 60-23

Corner consists of a T.M. Post (not) in place

State condition Good

Dimensions above ground 36" ~~3 1/3~~" inches

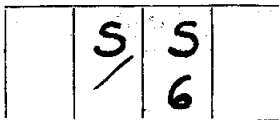
Sketch grooves, letters, figures, or notches, on proper face or edge.

CARDINAL POSITION

DIAGONAL POSITION



N W S E



NW SW SE NE

Mound of _____ is located _____

Pits are located _____

Sketch markings of Bearing Trees (or Rocks) in proper box and fill blanks below, giving bearings from Corner to Trees and Distances in Links.



Species T.M.

Diameter 4"

Bearing S-27°30'E

Distance 24.5

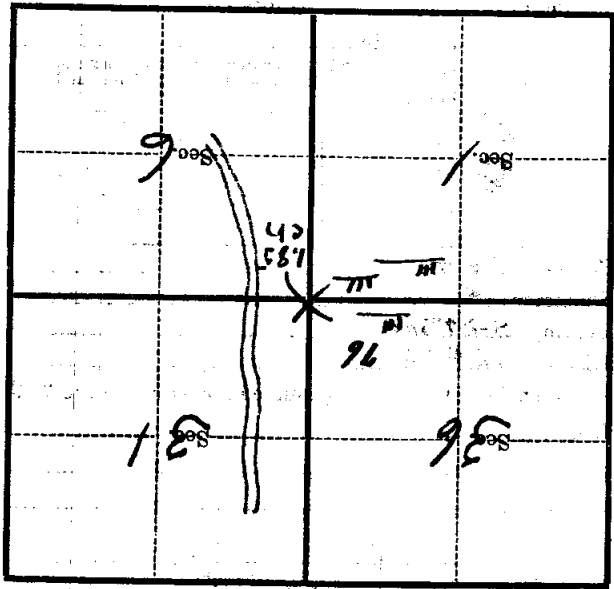
Do you believe this to be a genuine Land Office Corner? yes

If not, why? _____

8/11/35 (Date) Byers (Signature) Chief of Party (Title) CCF-2549

1.85 ch. directed by
of road; indicated by
METAL TAG on west
side of road.
Corner again.

Metal Location Poster is on a **BLACK SPRUCE**
tree 3 inches diameter, on the **NE**
side of **SECTION CORNER**
from which this Corner bears
~~160~~ chains distant.
Give any further facts which will aid in finding this



(Make sketch of topography near Corner)