

U. S. Department of Agriculture
FOREST SERVICE

N-21

Chippewa NATIONAL FOREST

CORNERS OF THE PUBLIC SURVEY

T. 60 N., R. 26 W., 4th Mer.

Section Corner common to sections
13, 14, 23, and 24

Corner consists of an iron pipe (not) in place

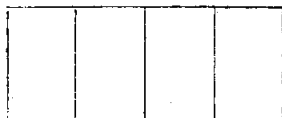
State condition good

Dimensions above ground 4 inches

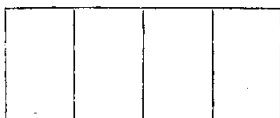
Sketch grooves, letters, figures, or notches, on proper face or edge.

CARDINAL POSITION

DIAGONAL POSITION



N W S E

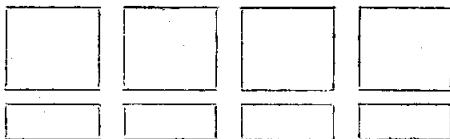


NW SW SE NE

Mound of _____ is located _____

Pits are located _____

Sketch markings of Bearing Trees (or Rocks) in proper box and fill blanks below, giving bearings from Corner to Trees and Distances in Links.



Species *wh. pine*

Diameter 16"

Bearing S 29 W

Distance 35 lbs.

Do you believe this to be a genuine Land Office Corner? *yes*

~~Not~~, why? *Some marks identified as scribbling on upper box by Mike Guthrie (state ranger), C.W. Carlson (U.S. ranger), & Knoblauch (U.S.F.S.)*

Charles J. Knoblauch

(Signature)

E.C.W. Asst.

July 12, 1937

(Date)

(Title)

From this corner N 6° E 27 chs found bearing
one stump, looking with another B.T.
mentioned in A. h. o. notes.

This corner bears N 36° W, 04 chs. distant
diameter on NW side of tree from which
Corner again. Another post on aspen tree 3 in
Give any further facts which will aid in finding this

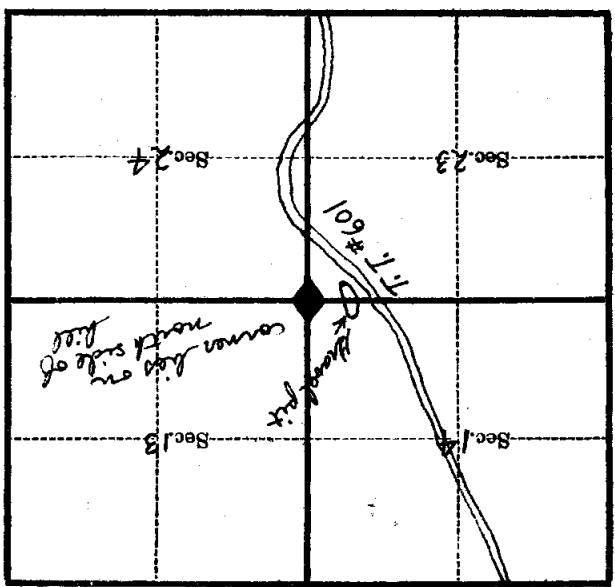
chains distant .095

from which this Corner bears S 56° W

side of tree.

tree 3 inches diameter, on the SW

Metal Location Poster is on a Aspen



(Make sketch of topography near Corner)

T. 60N. R. 26W., 4th Prim Mer.

U. S. Department of Agriculture
FOREST SERVICE

camp copy

N-21

Chippewa NATIONAL FOREST

CORNERS OF THE PUBLIC SURVEY

T. 60 N., R. 26 W., 4th Mer.

Section

Corner common to Sections

13, 14, 23, and 24

Corner consists of a iron pipe in place

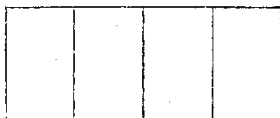
State condition good

Dimensions above ground 4 inches

Sketch grooves, letters, figures, or notches, on proper face or edge.

CARDINAL POSITION

DIAGONAL POSITION



N W S E

NW SW SE NE

Mound of _____ is located _____

Pits are located _____

Sketch markings of Bearing Trees (or Rocks) in proper box and fill blanks below, giving bearings from Corner to Trees and Distances in Links.



Species wh. pine

Diameter 16"

Bearing S24W

Distance 35 lbs.

Do you believe this to be a genuine Land Office Corner? Yes

If not, why? Some marks identified as scribing on upper box by Mike Guthrie (state ranger), S.W. Carlson (U.S. ranger), & Knoblauch (U.S. F.S.)

Charles J. Knoblauch

(Signature)

July 12, 1937

(Date)

E. C. W. Asst.

(Title)

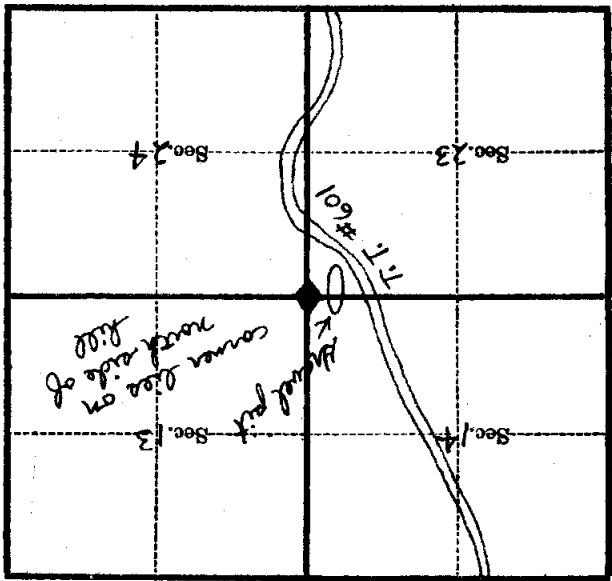
From this corner N 6° E 27 lbs.
found Norway pine stump, looking with
another B.T. mentioned in G.S.O. notes

Another poster on open tree
3 m. D.B.H. on W side of tree from
which this corner bears N 36° W, .04 ch
distant
Corner again.

Give any further facts which will aid in finding this
chains distant. .095

from which this Corner bears S 56° W
side of tree

tree 3 inches diameter, on the SW
Metal Location Poster is on a aspen



(Make sketch of topography near Corner)

T. 60 N. R. 26 W., 4th Mer.

U. S. Department of Agriculture

FOREST SERVICE

Chippewa

NATIONAL FOREST

P-21

CORNERS OF THE PUBLIC SURVEY

T. 60 N., R. 26 W., 4th Mer.

Section

Corner common to Sections

13, 14, 23, and 24

Corner consists of a iron pipe (not) in place

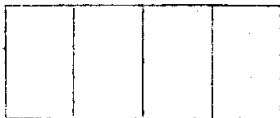
State condition good

Dimensions above ground 4 inches

Sketch grooves, letters, figures, or notches, on proper face or edge.

CARDINAL POSITION

DIAGONAL POSITION



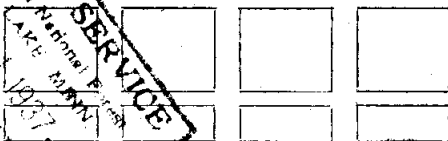
N W S E

NW SW SE NE

Mound of _____ is located _____

_____ are located _____

Sketch markings of Bearing Trees (or Rocks) in proper box and fill blanks below, giving bearings from Corner to Trees and Distances in Links.



Species Eng. pine

Diameter 16"

Bearing S 27 W

Distance 35 lbs

Do you believe this to be a genuine Land Office Corner? yes

If not, why? Some marks identified as

scribing on upper box by Mike Guthrie

(state ranger), C.W. Carlson (U.S. F.S. ranger) & Knoblauch

(U.S. F.S.)

Charles C. Knoblauch

(Signature)

E. C. W. asst.

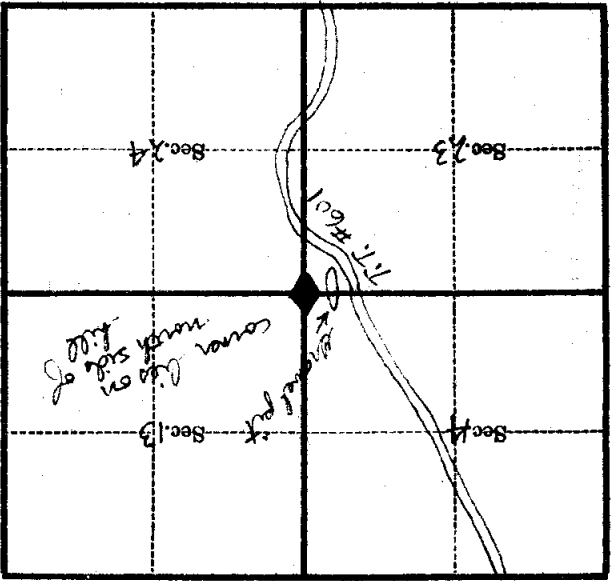
(Title)

July 12, 1937
(Date)

RECEIVED JUL 14 1937 NATIONAL FOREST SERVICE

Corner again.
 Another poster on upon the 3 in
 P.B.H. on NW side of tree from which
 the corner bears N 86° W, 04 chs. distant
 From this corner N 6° E 27 chs. found
 Norway pine stump, checking with another
 E.T. mentioned in A.L.O. notes.

Metal Location Poster is on a
 Aspen tree 3 inches diameter, on the
 side of *North*
 from which this Corner bears S 56° W
 .095 chains distant.
 Give any further facts which will aid in finding this



(Make sketch of topography near Corner)

T. 60N. R. 26W. 4th Mer.