

Form 874-B—Revised May, 1918  
 U. S. Department of Agriculture  
 FOREST SERVICE

Chippewa NATIONAL FOREST

CORNERS OF THE PUBLIC SURVEY

T. 60 R. 26 Mer. 4

1/4 Corner common to Sections

22, and 23

Corner consists of a stone 4x4x40" (not) in place

State condition new

Dimensions above ground 36 inches

Sketch grooves, letters, figures, or notches, on proper face or edge.

CARDINAL POSITION

DIAGONAL POSITION

<u>76</u>	<u>APR 20 1911</u>	<u>20 1/2</u>	<u>1/16</u>
<u>R</u>	<u>1/16</u>	<u>570</u>	<u>5.2</u>
<u>26</u>	<u>S. 23</u>	<u>91 2/3</u>	<u>22</u>
<u>N</u>	<u>W</u>	<u>S</u>	<u>E</u>

<u>NW</u>	<u>SW</u>	<u>SE</u>	<u>NE</u>

Mound of \_\_\_\_\_ is located \_\_\_\_\_

Pits are located \_\_\_\_\_

Sketch markings of Bearing Trees (or Rocks) in proper box and fill blanks below, giving bearings from Corner to Trees and Distances in Links.


Species \_\_\_\_\_

Diameter \_\_\_\_\_

Bearing \_\_\_\_\_

Distance \_\_\_\_\_

Do you believe this to be a genuine Land Office Corner? \_\_\_\_\_

If not, why? CCC

Hanslin

(Signature)

(Date)

CCC  
(Title)

FIELD NOTES

CORNER OF THE PUBLIC SQUARE

Corner again. *Force 3 w m p*

Give any further facts which will aid in finding this

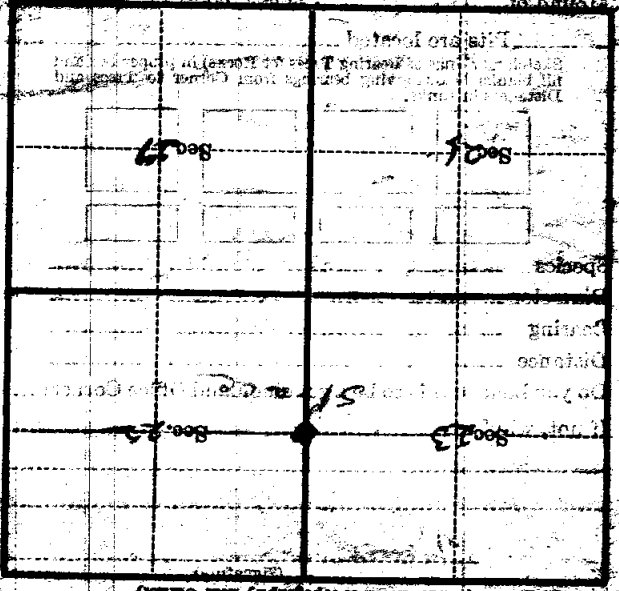
distant

from which this Corner bears *5.70 W*

side of

tree inches diameter, on the *E*

Mark Location Poster is on a *3 ft*



(Make sketch of topography first.)