

Form 874-9—Revised May, 1918
 U. S. Department of Agriculture
 FOREST SERVICE

A-13

Chippewa NATIONAL FOREST

CORNERS OF THE PUBLIC SURVEY

T. 60 R. 26 472 Mer.

Section 3, 4, 53, and 34 Corner common to Sections

Corner consists of a Tamarack stake (not) in place
 State condition Poor

Dimensions above ground 48" X 4" X 2" inches
 Sketch grooves, letters, figures, or notches, on proper face or edge.

CARDINAL POSITION

DIAGONAL POSITION

	<u>Chippewa</u>		<u>160N</u> <u>R26W</u> <u>33</u>
N	W	S	E

NW	SW	SE	NE

Mound of _____ is located _____

Pits are located _____

Sketch markings of Bearing Trees (or Rocks) in proper box and fill blanks below, giving bearings from Corner to Trees and Distances in Links.

Species _____

Diameter _____

Bearing _____

Distance _____

Do you believe this to be a genuine Land Office Corner? yes

If not, why? _____

S. Rommel
 (Signature)

Compassman
 (Title)

11/3/33
 (Date)

NO

N side of town road

Corner again.

Give any further facts which will aid in finding this

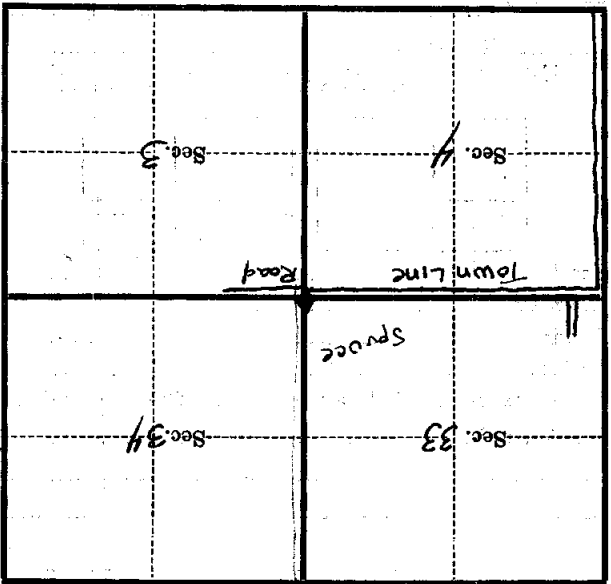
chains distant.

from which this Corner bears

side of

tree inches diameter, on the

Metal Location Poster is on a



(Make sketch of topography near Corner)

T. 60 R. 26 Mer. 174

U. S. DEPARTMENT OF AGRICULTURE
FOREST SERVICE

A13

posted

Chippewa NATIONAL FOREST

CORNERS OF THE PUBLIC SURVEY

T. 60 R. 26 4 Mer.

Section Corner common to Sections
3, 4, (34) and 34, (1-36)

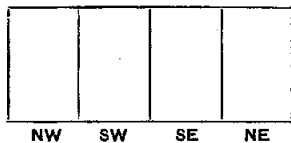
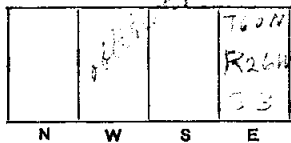
Corner consists of a stone (not) in place
State condition good

Dimensions above ground 2 1/2 inches.

Sketch grooves, letters, figures, or notches, on proper face or edge.

CARDINAL POSITION

DIAGONAL POSITION



Mound of _____ is located _____

Pits are located _____

Sketch markings of Bearing Trees (or Rocks) in proper box and fill blanks below, giving bearings from Corner to Trees and Distances in Links.



Species _____
 Diameter _____
 Bearing _____
 Distance _____

Do you believe this to be a genuine Land Office Corner? Yes

If not, why? _____

S. R. ...

Signature.

Nov 3, 1933

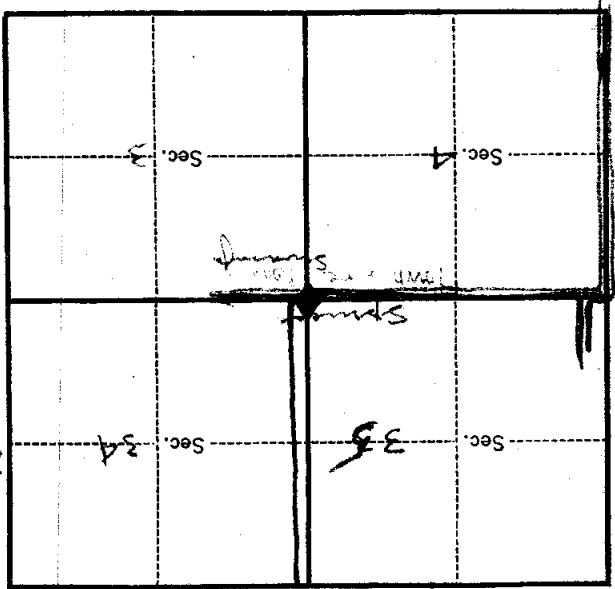
Date.

Comptroller

Title.

T. 60 R. 26 A Mer.

8-2027 (Make sketch of topography near Corner.)



Metal Location Poster is on a
 tree _____ inches diameter, on the
 side of _____
 from which this Corner bears _____
 chains distant.
 Give any further facts which will aid in finding this
 Corner again.

N. 1/4 of T. 60 R. 26 A.