

U. S. Department of Agriculture
FOREST SERVICE

Posted
CHIPPEWA NATIONAL FOREST

CORNERS OF THE PUBLIC SURVEY

T. 60 N. R. 26 W. 43^{1/2} Mer.

1/4 Corner common to Sections
17, 20, _____, and _____

Corner consists of a Wooden Stake (~~rod~~) in place
State condition Fair

Dimensions above ground 36 inches

Sketch grooves, letters, figures, or notches, on proper face or edge.

CARDINAL POSITION

DIAGONAL POSITION

<u>1/4</u>		<u>1/4</u>	
<u>S.</u>		<u>S</u>	
<u>17</u>		<u>20</u>	
N	W	S	E

NW	SW	SE	NE

Mound of _____ is located _____

Pits are located _____

Sketch markings of Bearing Trees (or Rocks) in proper box and fill blanks below, giving bearings from Corner to Trees and Distances in Links.

<u>1/4</u>	<u>1/4</u>		
<u>S</u>	<u>S</u>		
<u>20</u>	<u>20</u>		
<u>BT</u>	<u>BT</u>		

Species Non-Pine Non-Pine

Diameter 8" 12"

Bearing S18°W S38°E

Distance 162chs 92chs

Do you believe this to be a genuine Land Office Corner? Yes

If not, why? _____

Ralph S. Johnson
(Signature)

January 10, 1925
(Date)

Subconstruction Foreman
(Title)

8th Type

Corner again.

Give any further facts which will aid in finding this

chains distant.

35

from which this Corner bears

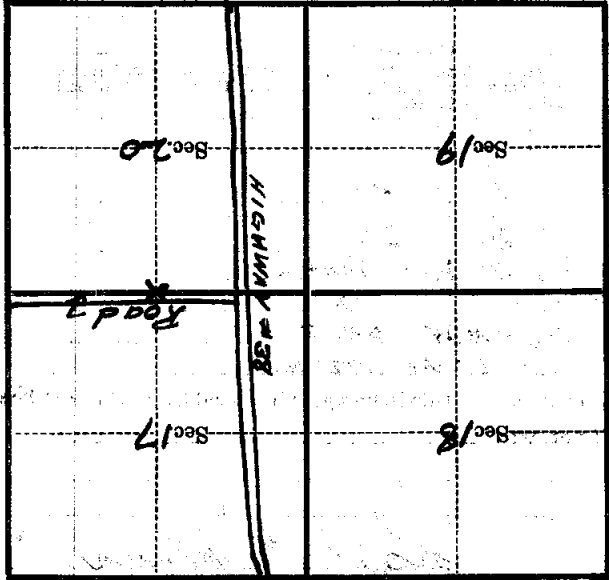
S. 76° W.

side of

Tree

tree 8 inches diameter, on the North

Metal Location Poster is on a Norway Pine



(Make sketch of topography near Corner)

T. 60 N. R. 26 W. 4th Mer.

U. S. Department of Agriculture
FOREST SERVICE

2-7

CHIPPEWA NATIONAL FOREST

CORNERS OF THE PUBLIC SURVEY

T. 60 N. R. 26 W. 4th Mer.

1/4 Corner common to Sections
17, 20, _____, and _____

Corner consists of a Wooden Stake in place
State condition Fair

Dimensions above ground 36 inches

Sketch grooves, letters, figures, or notches, on proper face or edge.

CARDINAL POSITION

DIAGONAL POSITION

<u>1/4</u>		<u>1/4</u>	
<u>S.</u>		<u>S</u>	
<u>17</u>		<u>20</u>	
N	W	S	E

NW	SW	SE	NE

Mound of _____ is located _____

Pits are located _____

Sketch markings of Bearing Trees (or Rocks) in proper box and fill blanks below, giving bearings from Corner to Trees and Distances in Links.

<u>1/4</u> <u>S</u> <u>20</u>	<u>1/4</u> <u>S</u> <u>20</u>		
<u>BT</u>	<u>BT</u>		

Species Non Pine Non Pine

Diameter 8" 12"

Bearing E. 18° W. S. 38° E.

Distance 62 chs. 92 chs.

Do you believe this to be a genuine Land Office Corner? Yes

If not, why? _____

Ralph J. Johnson
(Signature)

January 19, 1935
(Date)

Sub-Construction Foreman
(Title)

86 Type

Corner again.

Give any further facts which will aid in finding this

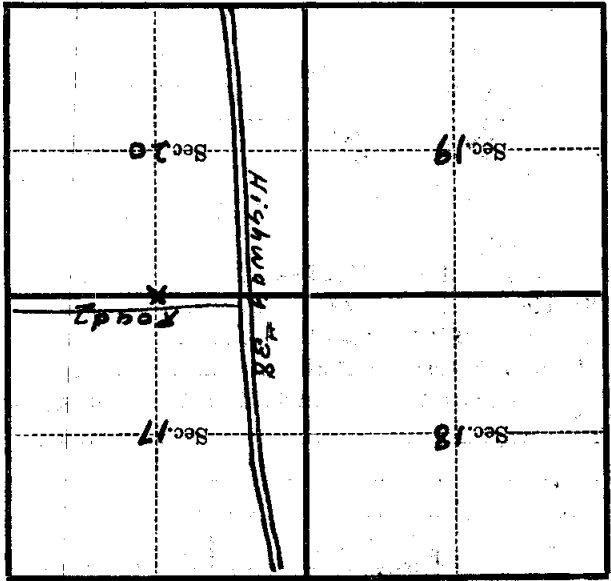
chains distant. 35

from which this Corner bears 5.76 W.

side of Tree

tree 8 inches diameter, on the North

Metal Location Poster is on a Norway Pine



(Make sketch of topography near Corner)

T. 60 N. R. 26 W. 4th Mer.