

Form 874-9—Revised May, 1918
 U. S. Department of Agriculture
 FOREST SERVICE

N-17

Chippewa NATIONAL FOREST
 CORNERS OF THE PUBLIC SURVEY

T. 59 N R. 27 W 4 Mer.

5 Corner common to Sections
15, 14, 22, and 23

Corner consists of a Cedar Post in place
 State condition Partly Decayed

Dimensions above ground 9.8 inches
 Sketch grooves, letters, figures, or notches, on proper face or edge.
 CARDINAL POSITION DIAGONAL POSITION

N	W	S	E

	S		
	15		
NW	SW	SE	NE

Mound of _____ is located _____

Pits are located _____

Sketch markings of Bearing Trees (or Rocks) in proper box and fill blanks below, giving bearings from Corner to Trees and Distances in Links.

T59N R27W S22	S 15	S 14	

Species Tora (Stump) tan (Stump) tan (Stump)
 Diameter 12" 20" 14"
 Bearing S22W N50W N63E
 Distance 0.13 0.02 0.13

Do you believe this to be a genuine Land Office Corner? Yes
 If not, why? _____

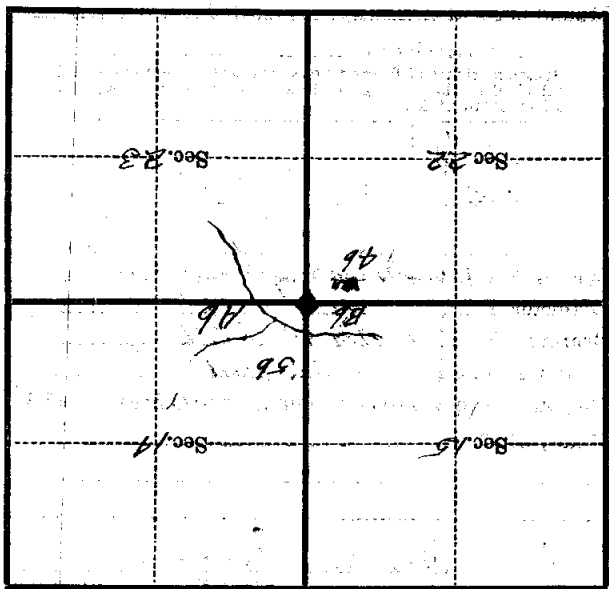
Arnold Larson
 (Signature)

1-9-35
 (Date)

E.C.C. Enrollee
 (Title)

Corner again.
Corner is located in a
small balsam thicket near
edge of a swamp.

Give any further facts which will aid in finding this
D.O.C. chains distant
from which this Corner bears N 95 E
side of tree
tree 5 inches diameter, on the NE
Metal Location Poster is on a Cedar



(Make sketch of topography near Corner)

U. S. Department of Agriculture
FOREST SERVICE

61-N

Shippewa NATIONAL FOREST

CORNERS OF THE PUBLIC SURVEY

T. 59 R. 27W 4 Mer.
Section Corner common to Sections

15-14, 22, and 23

Corner consists of a Cedar (~~not~~) in place

State condition Partly Decayed

Dimensions above ground 4 ft. inches

Sketch grooves, letters, figures, or notches, on proper face or edge.

CARDINAL POSITION

DIAGONAL POSITION

--	--	--	--

N W S E

	S 15		
--	---------	--	--

NW SW SE NE

Mound of _____ is located _____

Pits are located _____

Sketch markings of Bearing Trees (or Rocks) in proper box and fill blanks below, giving bearings from Corner to Trees and Distances in Links.

T. 59 N R. 27 W 522

S 15

S 14

--

--

--

--

--

Species Tom Stump Tom Stump Tom Stump

Diameter 12" 20" 14"

Bearing S23°W N5°W N63°E

Distance .13ch .26ch .13ch

Do you believe this to be a genuine Land Office Corner? Yes

If not, why? _____

Arnold Larson

(Signature)

1-9-35

(Date)

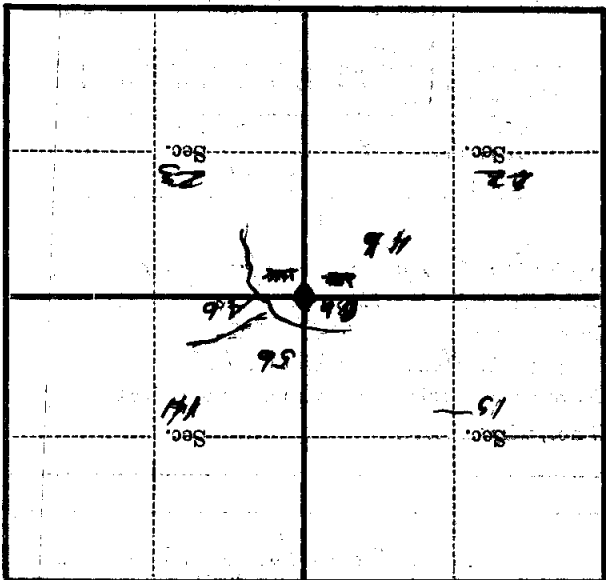
C. C. Culler

(Title)

Corner again.
 Corner located in a
 small Balsam thicket in
 NW swamp

Give any further facts which will aid in finding this
 corner distant.

0874
 from which this Corner bears
 N 45° E
 side of Trs
 tree 6 inches diameter, on the NE
 Metal Location Poster is on a Cedar



(Make sketch of topography near Corner)

U. S. Department of Agriculture

FOREST SERVICE

Previously
 Chippewa NATIONAL FOREST N17

CORNERS OF THE PUBLIC SURVEY

T. 59 N R. 27 W 4th P Mer.

Section 17 Corner common to Sections

15, 14, 22, and 23

Corner consists of a Cedar P (not) in place

State condition Partly Decayed

Dimensions above ground 4 ft. inches

Sketch grooves, letters, figures, or notches, on proper face or edge.

CARDINAL POSITION

DIAGONAL POSITION

--	--	--	--

N W S E

	S		
	15		

NW SW SE NE

Mound of _____ is located _____

Pits are located _____

Sketch markings of Bearing Trees (or Rocks) in proper box and fill blanks below, giving bearings from Corner to Trees and Distances in Links.

T 59 R 27 W S 22	S 15	S 14	

Species *Tom* *Stump* *Tom* *Stump* *Tom* *Stump*

Diameter 12" 20" 14"

Bearing S 22° W N 50° W N 63° E

Distance 13 ch 26 ch 13 ch

Do you believe this to be a genuine Land Office Corner?

If not, why? _____

Arnold Larson

(Signature)

Jan 9 '35

(Date)

C. C. Ensaltee

(Title)

Corner is located just
 a small distance from
 the 46 swamp

Corner again.

Give any further facts which will aid in finding this

side of ~~the~~ distant

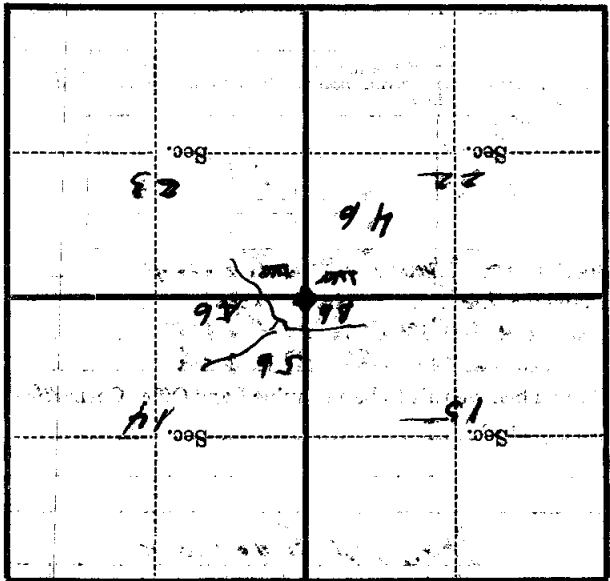
from which this Corner bears

N 45° E

side of Tr 22

tree 6 inches diameter, on the NE

Metal Location Poster is on a Cedar



(Make sketch of topography near Corner)

T. 59N R. 22W N-17 Mer.