

U. S. Department of Agriculture
FOREST SERVICE

N-13

Chippewa NATIONAL FOREST

CORNERS OF THE PUBLIC SURVEY

T. 59N R. 27W 9th Mer.

Sec Corner common to Sections
16, 15, 21, and 22

Corner consists of a Steel Stake (not) in place

State condition Good

Dimensions above ground Ground level inches

Sketch grooves, letters, figures, or notches, on proper face or edge.

CARDINAL POSITION

DIAGONAL POSITION

--	--	--	--

N W S E

16	21	22	15
----	----	----	----

NW SW SE NE

Mound of _____ is located _____

Pits are located _____

Sketch markings of Bearing Trees (or Rocks) in proper box and fill blanks below, giving bearings from Corner to Trees and Distances in Links.

S 16	S 21	S 15	
---------	---------	---------	--

B.T.	B.T.	B.T.	
------	------	------	--

Species N.P. N.P. N.P.

Diameter 10" 11" 12"

Bearing N. 31° W S. 59° W N. 53° E

Distance 0.37 0.31 0.45

Do you believe this to be a genuine Land Office Corner? Yes

If not, why? _____

E. E. Egan
(Signature)
12/7-24
(Date)
C. C. Enroller
(Title)

Handwritten notes and markings on the top portion of the page, including a large 'X' and other illegible scribbles.

Corner again.

Give any further facts which will aid in finding this

chains distant.

0.07

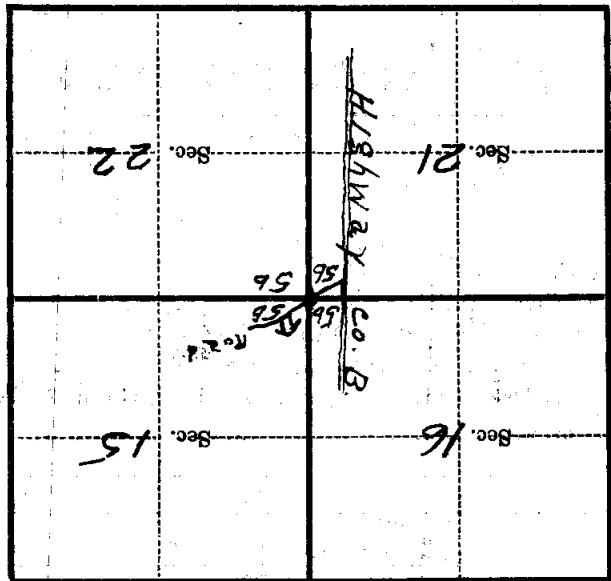
from which this Corner bears N58°W

side of ~~Tree~~

tree 10" inches diameter, on the N.W.

Metal Location Poster is on a

N.P.



(Make sketch of topography near Corner)

T. 59N R. 27W 7A Mer. N-13

U. S. Department of Agriculture
FOREST SERVICE

M-13

Chippewa NATIONAL FOREST
CORNERS OF THE PUBLIC SURVEY

T. 59 N R. 27 W 4th Mer.

Sec Corner common to Sections
16, 15, 21, and 22

Corner consists of a Steel stake (not) in place
State condition Good

Dimensions above ground Ground Level, inches
Sketch grooves, letters, figures, or notches, on proper face or edge.

CARDINAL POSITION

DIAGONAL POSITION

N	W	S	E

16	21	22	15
NW	SW	SE	NE

Mound of _____ is located _____

Pits are located _____

Sketch markings of Bearing Trees (or Rocks) in proper box and fill blanks below, giving bearings from Corner to Trees and Distances in Links.

S 16	S 21	S 15	
BT	BT	BT	

Species NP NP ND
Diameter 10" 11" 12"
Bearing N31W S59W N53E
Distance 0.37 0.31 0.45

Do you believe this to be a genuine Land Office Corner? Yes
If not, why? _____

E A Logan

(Signature)

CC Eusabee

(Title)

12/7-34
(Date)

Corner again.

Give any further facts which will aid in finding this

chains distant.

0.07

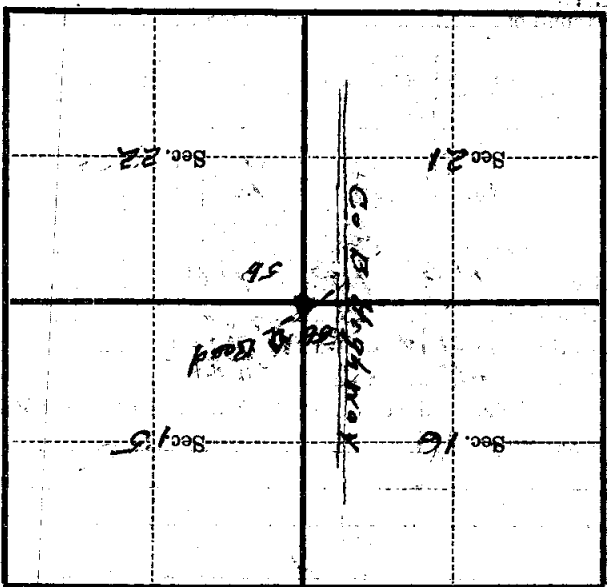
N 58 W

from which this Corner bears

side of Tree

tree 10 inches diameter, on the N W

Metal Location Poster is on a N D



(Make sketch of topography near Corner)

N-13

T. 59 N. R. 27 W. 4th Mer.

U. S. Department of Agriculture

FOREST SERVICE

Posted

Chippewa

NATIONAL FOREST N13

CORNERS OF THE PUBLIC SURVEY

T. 59N R. 27W 4th Mer.

Sec. Corner common to Sections 16, 15, 21, and 22.

Corner consists of a Steel stake (not) in place State condition Good

Dimensions above ground Ground Level inches

Sketch grooves, letters, figures, or notches, on proper face or edge.

CARDINAL POSITION

DIAGONAL POSITION

N	W	S	E

16	21	22	15
NW	SW	SE	NE

Mound of _____ is located _____

Pits are located _____

Sketch markings of Bearing Trees (or Rocks) in proper box and fill blanks below, giving bearings from Corner to Trees and Distances in Links.

S 16	S 21	S 15	
---------	---------	---------	--

B.T.	B.T.	B.T.	
------	------	------	--

Species N.P. N.P. N.P.
 Diameter 10" 11" 12"
 Bearing N31°W S59°W N53°E
 Distance 0.37 0.31 0.45

Do you believe this to be a genuine Land Office Corner? *yes*

If not, why? _____

E. A. Sagen

(Signature)

12/7-34

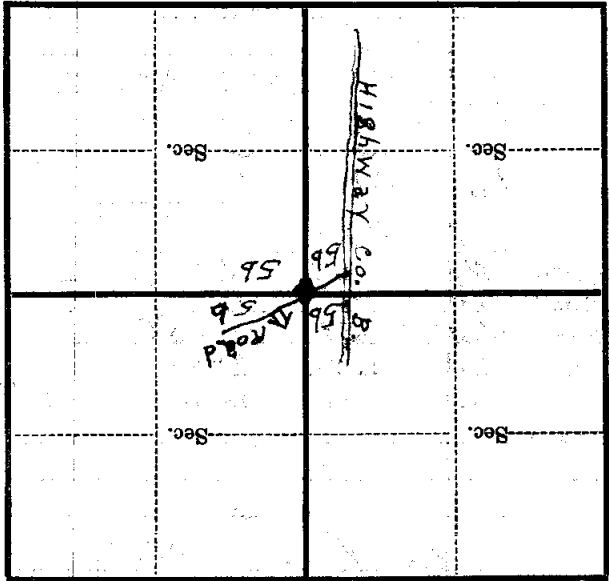
(Date)

C. E. Evaller

(Title)

Metal Location Poster is on a tree 10" inches diameter, on the side of ~~the~~ from which this Corner bears 0.07 chains distant. Give any further facts which will aid in finding this Corner again.

N.P.
N.W.
N 58° W



(Make sketch of topography near Corner)

T. 59N R. 27W Mer. N-13