

U. S. Department of Agriculture

FOREST SERVICE

E, F-17

Chippewa

NATIONAL FOREST

CORNERS OF THE PUBLIC SURVEY

T. 59 N R. 26 W 4th P Mer.

M.C.

Corner common to Sections

10, and 11

Corner consists of a Tamarack (not) in place

State condition Good

Dimensions above ground 36 inches

Sketch grooves, letters, figures, or notches, on proper face or edge.

CARDINAL POSITION

DIAGONAL POSITION

	S		S
	10		11

N W S E

NW SW SE NE

Mound of is located

Pits are located

Sketch markings of Bearing Trees (or Rocks) in proper box and fill blanks below, giving bearings from Corner to Trees and Distances in Links.

MC	MC S11	MC S10	
	BT	BT	

Species B. of Glass Birch Birch

Diameter 12 6 6

Bearing N50W N55E N18W

Distance 0.12 0.41 0.63

Do you believe this to be a genuine Land Office Corner? Yes

If not, why?

George J. Jernigan

(Signature)

10-18-35

(Date)

J. Jernigan C.M.

(Title)

Corner again.

Give any further facts which will aid in finding this

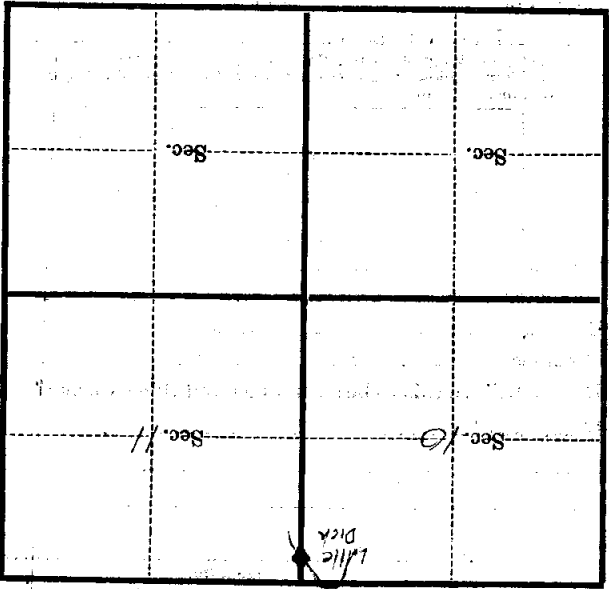
chain distant. *0.24*

from which this Corner bears *524 E*

side of *tree*

tree *10* inches diameter, on the *SE*

Metal Location Poster is on a *Aspen*



(Make sketch of topography near Corner)

U. S. Department of Agriculture

FOREST SERVICE

posted
EF-17

Chippewa NATIONAL FOREST

CORNERS OF THE PUBLIC SURVEY

T. 59 R. 26 4 Mer.

Meander Corner common to Sections
10, and 11

Corner consists of a stone (not) in place
State condition good

Dimensions above ground 36" x 36" inches.

Sketch grooves, letters, figures, or notches, on proper face or edge.

CARDINAL POSITION

DIAGONAL POSITION



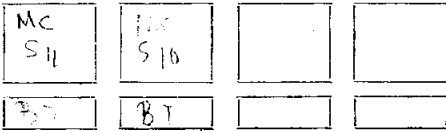
N W S E

NW SW SE NE

Mound of _____ is located _____

_____ Pits are located _____

Sketch markings of Bearing Trees (or Rocks) in proper box and fill blanks below, giving bearings from Corner to Trees and Distances in Links.



Species Birch Birch

Diameter 6" 5"

Bearing N45°E N15°W

Distance 4 ch 0.65 ch

Do you believe this to be a genuine Land Office Corner? Yes

If not, why? rest of ground - and BT marks

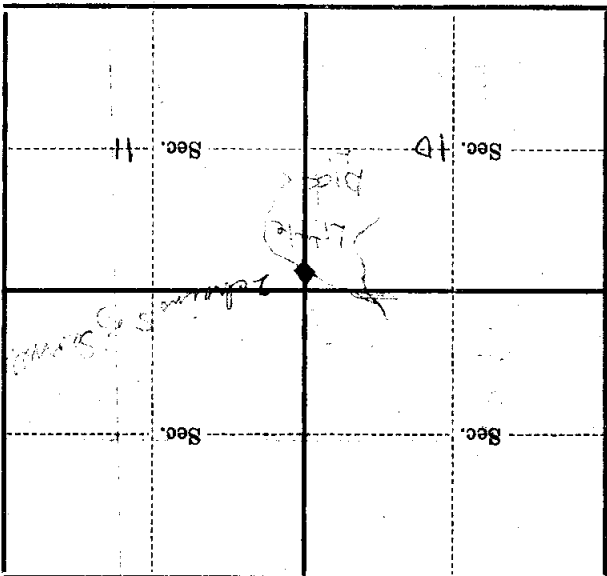
illegible but recognizable

Oct 23, 1935
(Date)

[Signature]
(Signature)
Surveyor
(Title)

Metal Location Poster is on a _____ inches diameter, on the _____ side of _____ from which this Corner bears _____ chains distant.

Give any further facts which will aid in finding this Corner again.



(Make sketch of topography near Corner)

U. S. Department of Agriculture
FOREST SERVICE

CHIPPEWA NATIONAL FOREST

CORNERS OF THE PUBLIC SURVEY

T. 59N R. 26W 4th P. Mer.

M.C.

Corner common to Sections

10, and 11

Corner consists of a Tamarack (not) in place

State condition good

Dimensions above ground 36 inches

Sketch grooves, letters, figures, or notches, on proper face or edge.

CARDINAL POSITION

DIAGONAL POSITION

	S		S
	10		11
N	W	S	E

NW	SW	SE	NE

Mound of _____ is located _____

Pits are located _____

Sketch markings of Bearing Trees (or Rocks) in proper box and fill blanks below, giving bearings from Corner to Trees and Distances in Links.

MC	MC S11	MC S10	
	BT	BT	

Species B. of Gilead Birch Birch

Diameter 12 6 6

Bearing N50W N55E N18W

Distance 0.12 0.41 0.63

Do you believe this to be a genuine Land Office Corner? Yes

If not, why? _____

George H. Jennings

(Signature)

10-18-35

(Date)

Jr. Foreman C&M

(Title)

Corner again.

Give any further facts which will aid in finding this

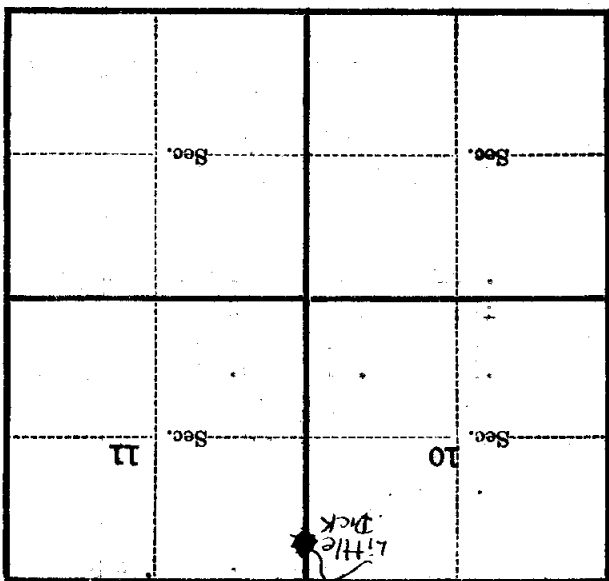
0.24 chains distant.

from which this Corner bears S24E

side of Tree

tree 10 inches diameter, on the S E

Metal Location Poster is on a Aspen



(Make sketch of topography near Corner)

T. 59 R. 26 4th P. Mer.