

U. S. Department of Agriculture

FOREST SERVICE

C, D-9 P

Chippewa NATIONAL FOREST

CORNERS OF THE PUBLIC SURVEY

T. 59N R. 26W 4 P Mer.

M C

Corner common to Sections

4, and 5

Corner consists of a (not) n place

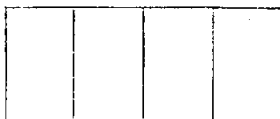
State condition

Dimensions above ground inches

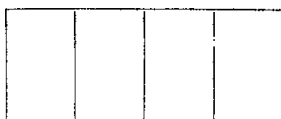
Sketch grooves, letters, figures, or notches, on proper face or edge.

CARDINAL POSITION

DIAGONAL POSITION



N W S E



NW SW SE NE

Mound of is located

Pits are located

Sketch markings of Bearing Trees (or Rocks) in proper box and fill blanks below, giving bearings from Corner to Trees and Distances in Links.



Species W. Cedar

Diameter 10

Bearing S61W

Distance 0.10

Do you believe this to be a genuine Land Office Corner? Yes

If not, why?

George H. Hennings

(Signature)

8-17-35

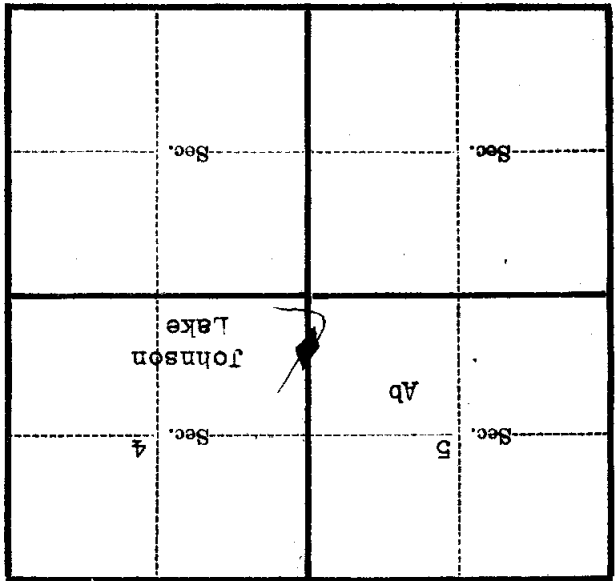
(Date)

Const. Foreman C&M

(Title)

Metal Location Poster is on a W. Cedar tree 10 inches diameter, on the N side of tree from which this Corner bears N61E 0.10 chains distant. Give any further facts which will aid in finding this Corner again.

Old blazes on Aspen (6") 0.10 chs SW of tree.



(Make sketch of topography near Corner)

U. S. Department of Agriculture
FOREST SERVICE

C, D-9

Chippewa

NATIONAL FOREST

CORNERS OF THE PUBLIC SURVEY

T. 59 N R. 26 W 4th P. Mer.

MC

Corner common to Sections

4, and 5

Corner consists of a _____ (not) in place

State condition _____

Dimensions above ground _____ inches

Sketch grooves, letters, figures, or notches, on proper face or edge.

CARDINAL POSITION

DIAGONAL POSITION

--	--	--	--

--	--	--	--

N W S E

NW SW SE NE

Mound of _____ is located _____

Pits are located _____

Sketch markings of Bearing Trees (or Rocks) in proper box and fill blanks below, giving bearings from Corner to Trees and Distances in Links.

Species W. Cedar

Diameter 10

Bearing S 61 W

Distance 0.10

Do you believe this to be a genuine Land Office Corner? Yes

If not, why? _____

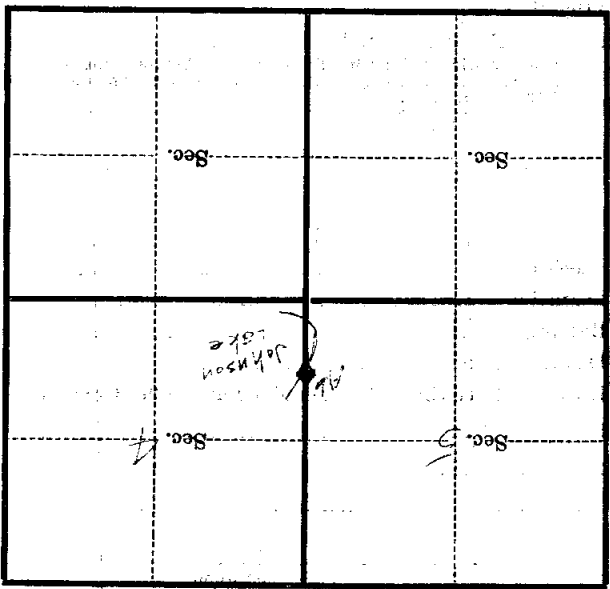
George H. Jennings
(Signature)

9-17-35
(Date)

Const. Asst. G. M.
(Title)

Corner again.
Old blazes on Aspen (6")
0.10 chs SW of tree

Give any further facts which will aid in finding this
0.10 chains distant.
from which this Corner bears
N 61 E
side of tree
tree 10 inches diameter, on the N
Metal Location Poster is on a W Cedar



(Make sketch of topography near Corner)