

U. S. Department of Agriculture  
FOREST SERVICE

*Noted*  
N-17

Chippewa NATIONAL FOREST

CORNERS OF THE PUBLIC SURVEY

T. 59N R. 26W 4th Mer.

Sec. Corner common to Sections  
22, 23, 14, and 15

Corner consists of a J. P. Post (not) in place  
State condition Good

Dimensions above ground 48 inches

Sketch grooves, letters, figures, or notches, on proper face or edge.

CARDINAL POSITION

DIAGONAL POSITION

--	--	--	--

N W S E

759 -26	S	23	14
515	22	23	14

NW SW SE NE

Mound of \_\_\_\_\_ is located \_\_\_\_\_

Pits are located \_\_\_\_\_

Sketch markings of Bearing Trees (or Rocks) in proper box and fill blanks below, giving bearings from Corner to Trees and Distances in Links.

S 22	Grown over	Grown over	Grown over
B.T.			

Species Birch N.P. N.P. N.P.  
Diameter 6.0" 8.0" 11.0" 7.0"  
Bearing S53°W S58½E N44E N54W  
Distance .60 ch. 1.00 ch. .75 ch. .75 ch.

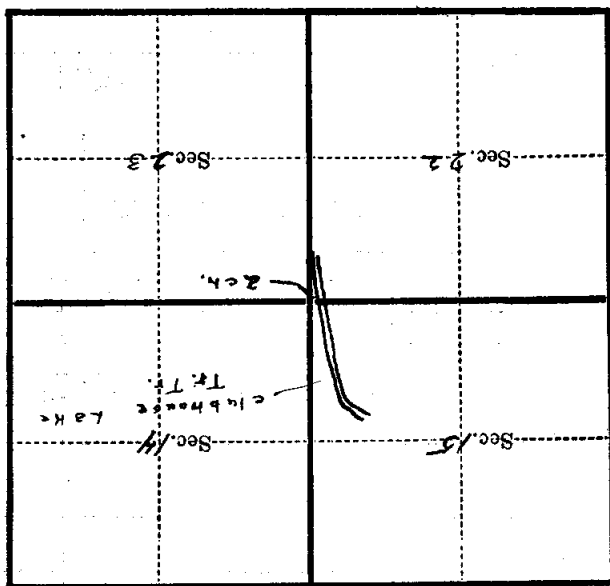
Do you believe this to be a genuine Land Office Corner? NO

If not, why? Acquisition Corner.

Edward J. Fullbrook  
(Signature)  
Dec. 14, 1934  
(Date)  
Sub. Foreman  
(Title)

Corner again.  
2 ch. East of Clubhouse  
Lake Tr. Tr.

Give any further facts which will aid in finding this  
corner again.  
21 chains distant.  
from which this Corner bears  
N 60 1/2  
side of  
T r s e  
tree 8.5 inches diameter, on the  
S. W  
Metal Location Poster is on a  
N. P



(Make sketch of topography near Corner)

T. 59 N R. 26 W 4th Mer.

**U. S. Department of Agriculture**  
**FOREST SERVICE**

N-17

Chippewa NATIONAL FOREST

**CORNERS OF THE PUBLIC SURVEY**T. 59N R. 26W 4th Mer.Sec. 22, 23, 14, and 15 Corner common to SectionsCorner consists of a J.P. Post (not) in place  
State condition GoodDimensions above ground 48 inchesSketch grooves, letters, figures, or notches, on proper face or edge.

CARDINAL POSITION

DIAGONAL POSITION

--	--	--	--

N W S E

759 -26	5	23	14
515	22		

NW SW SE NE

Mound of \_\_\_\_\_ is located \_\_\_\_\_

Pits are located \_\_\_\_\_

Sketch markings of Bearing Trees (or Rocks) in proper box and fill blanks below, giving bearings from Corner to Trees and Distances in Links.

S 22	Grown over	Grown over	Grown over
B.T.			

Species Birch N.P. N.P. N.P.  
 Diameter 6.0" 8.0" 11.0" 7.0"  
 Bearing S 53° W S 58½° E N 44° E N 54° W  
 Distance .60 ch. 1.00 ch. .75 ch. .75 ch.

Do you believe this to be a genuine Land Office Corner? NoIf not, why? Acquisition Corner  
1933

Leonard J. Pulkrabek  
(Signature)

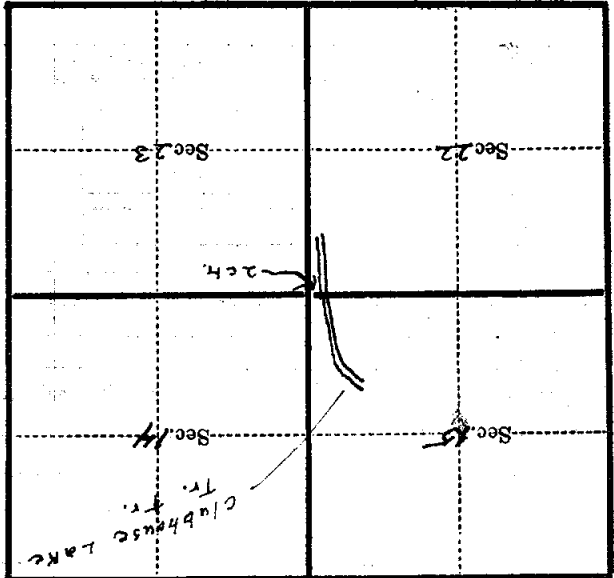
Dec. 14, 1934  
(Date)

Tech. Foreman  
(Title)

Dotted lines for writing.

Corner again.  
2 ch. East of Clubhouse  
Lake Tr. Tr.

Give any further facts which will aid in finding this  
side of Trees  
from which this Corner bears  
tree 8.5 inches diameter, on the SW  
Metal Location Poster is on a N.P



(Make sketch of topography near Corner)

T. 59N R. 26W 4th Mer.