

U. S. Department of Agriculture

FOREST SERVICE

posted

Chippewa Allotment

NATIONAL FOREST

R-5

CORNERS OF THE PUBLIC SURVEY

T. *59* R. *26* Mer. *4*

Section *19, 20, 30, and 29* Corner common to Sections

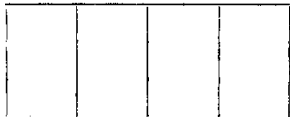
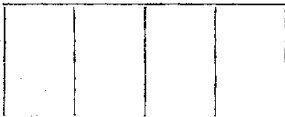
Corner consists of a _____ (not) in place State condition _____

Dimensions above ground _____ inches.

Sketch grooves, letters, figures, or notches, on proper face or edge.

CARDINAL POSITION

DIAGONAL POSITION



N W S E

NW SW SE NE

Mound of _____ is located _____

Pits are located _____

Sketch markings of Bearing Trees (or Rocks) in proper box and fill blanks below, giving bearings from Corner to Trees and Distances in Links.



Species *White Pine*
Diameter *36"*
Bearing _____
Distance _____

Do you believe this to be a genuine Land Office Corner? *yes*

If not, why? _____

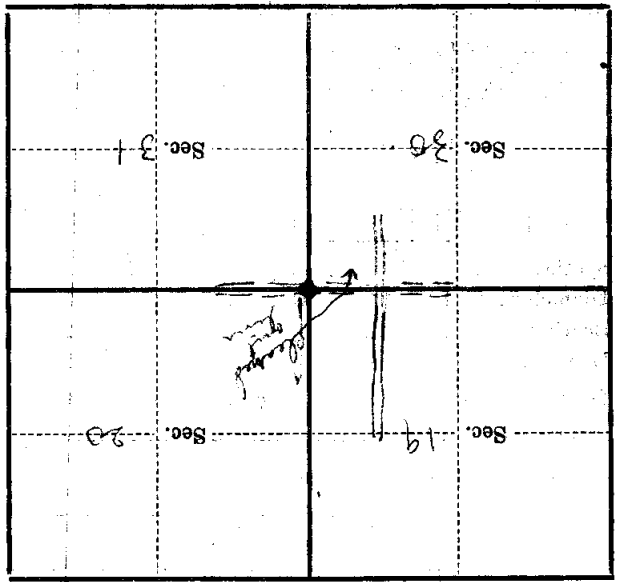
S. Remmel
(Signature)

Nov. 23/1913
(Date)

comptroller
(Title)

BT-75 a north-south
English east of west
Corner again.

Metal Location Poster is on a
tree inches diameter, on the
side of from which this Corner bears
chains distant.
Give any further facts which will aid in finding this



(Make sketch of topography near Corner)

T. 59 R. 26 Mer. 7

U. S. Department of Agriculture
FOREST SERVICE

R-5

Chippewa

NATIONAL FOREST

CORNERS OF THE PUBLIC SURVEY

T. 59 N R. 26 W 4 P. Mer.

Sec 19, 20, 29, and 30
Corner common to Sections

Corner consists of a _____ (not) in place
State condition _____

Dimensions above ground _____ inches

Sketch grooves, letters, figures, or notches, on proper face or edge.

CARDINAL POSITION

DIAGONAL POSITION

--	--	--	--

--	--	--	--

N W S E

NW SW SE NE

Mound of _____ is located _____

Pits are located _____

Sketch markings of Bearing Trees (or Rocks) in proper box and fill blanks below, giving bearings from Corner to Trees and Distances in Links.

		520	
		B.T.	

Species _____

Diameter _____

Bearing North

Distance 0.72

Do you believe this to be a genuine Land Office Corner? No

If not, why? Co. Survey

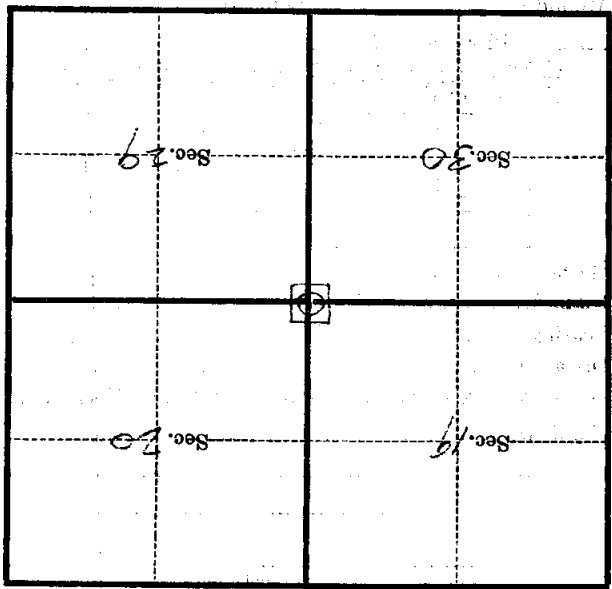
Geo. J. Jennings
(Signature)

Const. Foreman
(Title)

8-21-35
(Date)

Corner again.
On road, Broken line North

Give any further facts which will aid in finding this
0.65 chains distant.
From which this Corner bears
525 E
side of tree
tree 6 inches diameter, on the SE
Metal Location Poster is on a
Aspen



(Make sketch of topography near Corner)

T. 59N R. 26W A P Mer.

U. S. Department of Agriculture

FOREST SERVICE

R-5 P

chippewa NATIONAL FOREST

CORNERS OF THE PUBLIC SURVEY

T. 59N R. 26W 4 P Mer.

Section Corner common to sections 19, 20, 29, and 30

Corner consists of a (not) in place

State condition

Dimensions above ground inches

Sketch grooves, letters, figures, or notches, on proper face or edge.

CARDINAL POSITION

DIAGONAL POSITION

Cardinal position diagram with four empty boxes for N, W, S, E.

Diagonal position diagram with four empty boxes for NW, SW, SE, NE.

N W S E

NW SW SE NE

Mound of is located

Pits are located

Sketch markings of Bearing Trees (or Rocks) in proper box and fill blanks below, giving bearings from Corner to Trees and Distances in Links.

Diagram for sketching bearing trees with boxes for bearings and distances. One box contains 'S20' and another contains 'B. T.'.

Species

Diameter

Bearing North

Distance 0.72

Do you believe this to be a genuine Land Office Corner? No

If not, why? Co. Survey.

George H. Jennings

(Signature)

Const. Foreman C & M

8-21-35

(Date)

(Title)

On road. Brushed line North
Corner again.

Give any further facts which will aid in finding this

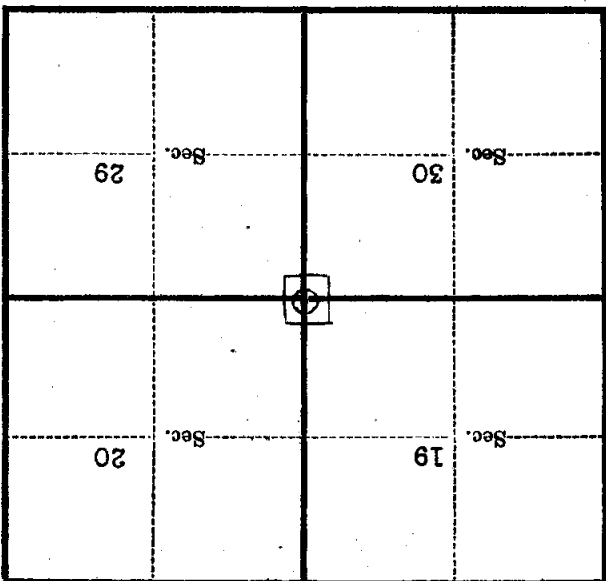
0.65 chains distant.

from which this Corner bears S 25 E

side of Tree

tree 6 inches diameter, on the S E

Metal Location Poster is on a Aspen



(Make sketch of topography near Corner)

T. 59N R. 26W 4P Mer.