

Form 874-0—Revised May, 1918
 U. S. Department of Agriculture
 FOREST SERVICE

A-21

Chippewa NATIONAL FOREST
 CORNERS OF THE PUBLIC SURVEY

T. 58-29N R. 27W Mer. 4

5 Corner common to Sections
35, 36, 1, and 2

Corner consists of a post (~~not~~) in place

State condition fair

Dimensions above ground 30 inches

Sketch grooves, letters, figures, or notches, on proper face or edge.

CARDINAL POSITION

DIAGONAL POSITION

N	W	S	E

159N 127W 5 35	158N R27W 5 2	758N R27W 5 1	759N R27W 5 36
NW	SW	SE	NE

Mound of _____ is located _____

Pits are located _____

Sketch markings of Bearing Trees (or Rocks) in proper box and fill blanks below, giving bearings from Corner to Trees and Distances in Links.

5 35			
B1			

Species Aspen

Diameter 12"

Bearing N75W

Distance 0.63

Do you believe this to be a genuine Land Office Corner? Yes

If not, why? _____

Roy Lapier
 (Signature)

C.C.C. Enrollee
 (Title)

9-2-35
 (Date)

Corner again.

Give any further facts which will aid in finding this

0.51 chains distant.

from which this Corner bears

S 67 E

side of

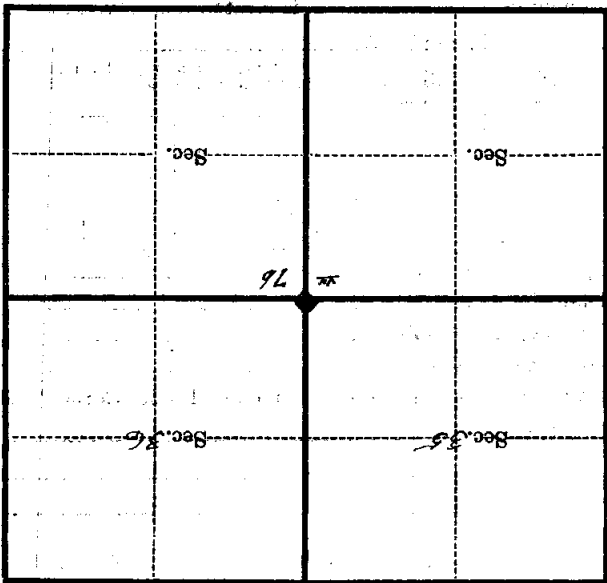
Tree

tree .12 inches diameter, on the

S E

Metal Location Poster is on a

Aspen



(Make sketch of topography near Corner)

T. 58-59 N. R. 27 W. Mer. 2

U. S. Department of Agriculture

FOREST SERVICE

J. Steel

A 21

CHIPPEWA

NATIONAL FOREST

CORNERS OF THE PUBLIC SURVEY

T. 58-59N R. 27W 4 Mer.

Corner common to Sections 35, 36, 1, and 2

Corner consists of a Post (not) in place

State condition Fair

Dimensions above ground 30 inches

Sketch grooves, letters, figures, or notches, on proper face or edge.

CARDINAL POSITION

DIAGONAL POSITION

N	W	S	E

T59N R27W S 35	T58N R27W S 2	T58N R27W S 1	T59N R27W S 36
NW	SW	SE	NE

Mound of _____ is located _____

Pits are located _____

Sketch markings of Bearing Trees (or Rocks) in proper box and fill blanks below, giving bearings from Corner to Trees and Distances in Links.

S 35			
BT			

Species Aspen

Diameter 12"

Bearing N45W

Distance 0.63

Do you believe this to be a genuine Land Office Corner? Yes

If not, why? _____

Roy Lapiet

(Signature)

OCC Enrollee

(Title)

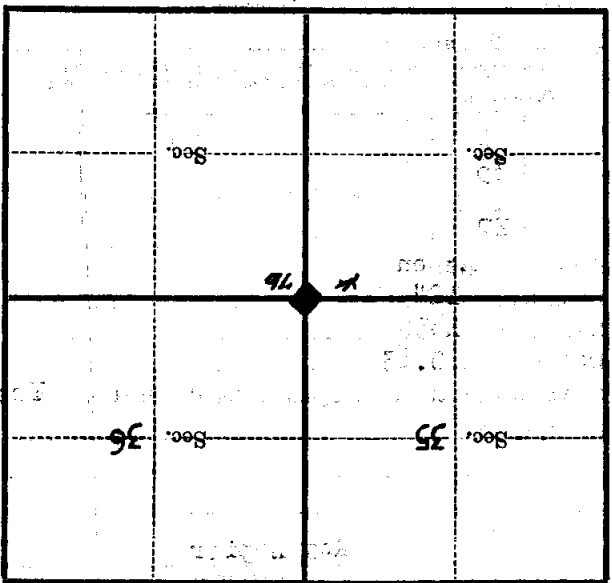
4-2-35

(Date)

Faint, illegible text on ruled lines at the top of the page.

Corner again.

Give any further facts which will aid in finding this
chains distant
0.51
from which this Corner bears
S67X
side of
Tree
tree 12 inches diameter, on the
S8
Metal Location Poster is on a
Aspen



(Make sketch of topography near Corner)

U. S. Department of Agriculture

FOREST SERVICE

10-21

~~SEPPENA~~

NATIONAL FOREST

CORNERS OF THE PUBLIC SURVEY

T. ~~52-52E~~ R. ~~27E~~ Mer.

Corner common to Sections ~~35~~, ~~36~~, ~~1~~, and ~~2~~

Corner consists of a ~~Post~~ (not) in place

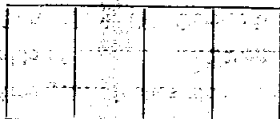
State condition ~~None~~

Dimensions above ground ~~30~~ inches

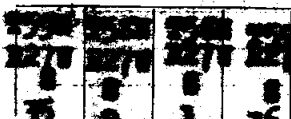
Sketch grooves, letters, figures, or notches, on proper face or edge.

CARDINAL POSITION

DIAGONAL POSITION



N W S E

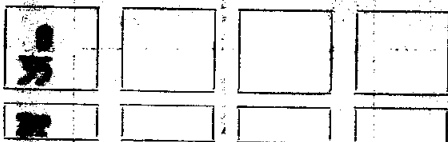


NW SW SE NE

Mound of _____ is located _____

Pits are located _____

Sketch markings of Bearing Trees (or Rocks) in proper box and fill blanks below, giving bearings from Corner to Trees and Distances in Links.



Species ~~Aspen~~

Diameter ~~12"~~

Bearing ~~N50W~~

Distance ~~0.63~~

Do you believe this to be a genuine Land Office Corner ~~Yes~~

If not, why? _____

~~Ray L. ...~~
(Signature)

~~...~~
(Title)

Corner again. Give any further facts which will aid in finding this

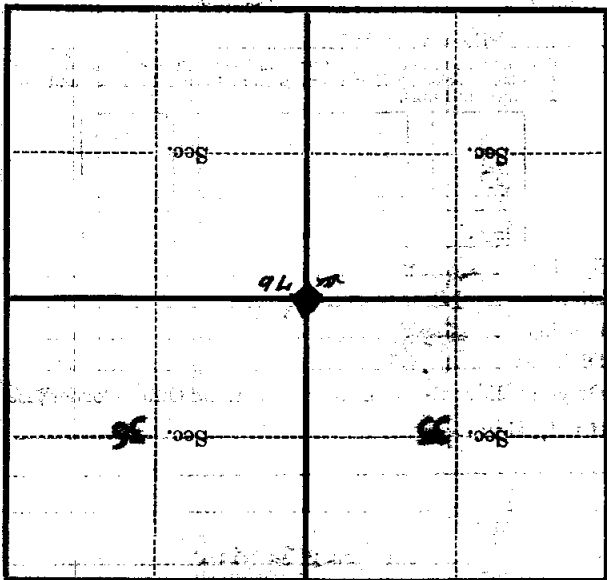
chains distant.

from which this Corner bears

side of

tree 12 inches diameter, on the

Metal Location Poster is on a



(Make sketch of topography near Corner)