

U. S. Department of Agriculture
FOREST SERVICE

D-18

NATIONAL FOREST

CORNERS OF THE PUBLIC SURVEY

T. 58 R. 25 Mer.

Corner common to Sections
2, _____, _____, and _____

Corner consists of a _____ (not) in place
State condition _____

Dimensions above ground _____ inches

Sketch grooves, letters, figures, or notches, on proper face or edge.

CARDINAL POSITION

DIAGONAL POSITION

<i>See Book</i>			
N	W	S	E

NW	SW	SE	NE

Mound of _____ is located _____

Pits are located _____

Sketch markings of Bearing Trees (or Rocks) in proper box and fill blanks below, giving bearings from Corner to Trees and Distances in Links.

Species _____

Diameter _____

Bearing _____

Distance _____

Do you believe this to be a genuine Land Office Corner? _____

If not, why? _____

P. H. Christensen
(Signature)

12-2-54
(Date)

D. F. P.
(Title)

line north

Toy visible from Lake Transit

pic. that stated 1829 =

No pipe but there is a

Corner again.

Give any further facts which will aid in finding this

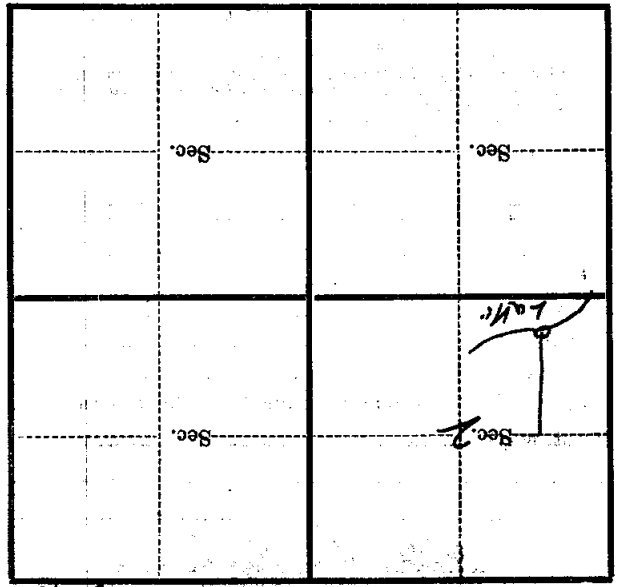
chains distant.

from which this Corner bears

side of

tree 4" inches diameter, on the south

Metal Location Poster is on a B. B.



(Make sketch of topography near Corner)

Mer. D-10

T. 58 R. 25