

INDEX

2-6	2-44-28	Lea Brown ✓
7-9	Crosby - Luth Ch.	Drainage ✓
10-11	11-45-29	Nakay Lake ✓
12-13	13-137-29	Barbour ✓
14-21	3-136-24	Proter Cache ✓
22	25-139-26	Lofgren ✓
23-	4-137-28	Swanson ✓
24-26	1-44-28	Madsen ✓
27-31	10-137-27	C Johnson - O'Brien ✓
34-35	3-45-28	Wassergehn ✓
36	26-137-23	Hauge ✓
37	Lot 6 B4	Mattson ^{submitt} ✓
38-39	23-141-28	Leerssen ✓
40	7-137-25	C E Lorson ✓
41	Lot 2 B1	Brighton Pt. Koelling ✓
42-45	14-137-28	Ziegenbalg ✓
46-49	8,9 139-26	C Hegman ✓
50	2-48-17	Frye - CARLTON ✓
51-	Lot 18-19 B	Brighton Pt. Hengley ✓
53-58	33-46-21	V Nelson ✓
59-60, 62	21 142-27	Schmidt ✓
61	27/34 46-25	Anderson ✓
63	27-139-26	Hase ✓

INDEX

69- 10-137-27 Johnson ✓

76 Lot 15. Raymond Area - Gordon - Rasmussen ✓
 77 Eaglewood - Cornelison ✓
 78 River Heights - Lot 24 Anhalt ✓
 79- 3-137-26 Saint Paul ✓

lot 7 - 33-14-28

Car
Leeson

514.5
3001
1586

199.6
170
296

1089
296
1385
425
1810

87-14
3) 261-40 (87-13)

24
21

179.6
87-13

92.47

1185-35

92.47

200 @ 3.50

199.5
155
292

15003

1544
149.8
46

185-34
92.47

95.15

190-30

38.9

169
2079

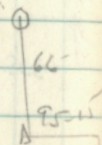
207.9

2686
4765

522

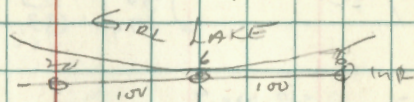
4765
435

Ind. pipe on
3/4 line



120-61
SS W. IN

38



Alair
plat

Lot 2 Lot 1

David
LS

15.1

87-12

1544

295.1

LS

87-13

100

92-47

100

80.2

148.7

5 David
See Page

37

Swick
plat

476.5

45.1
SAC
1000

33-41-28

Luron

175-04
87 32179-47
359 33
179 92200 3⁵⁰ 119.5

310 199.7

769.7

200

607.8

599.2

161.9

86

607.8

1224-57

112 28

200 4 313 199.5

200 4⁰⁰ 199.5

93.7

492.7

200 320

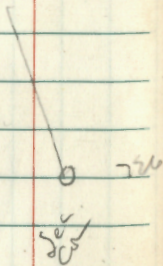
199.7

445.6

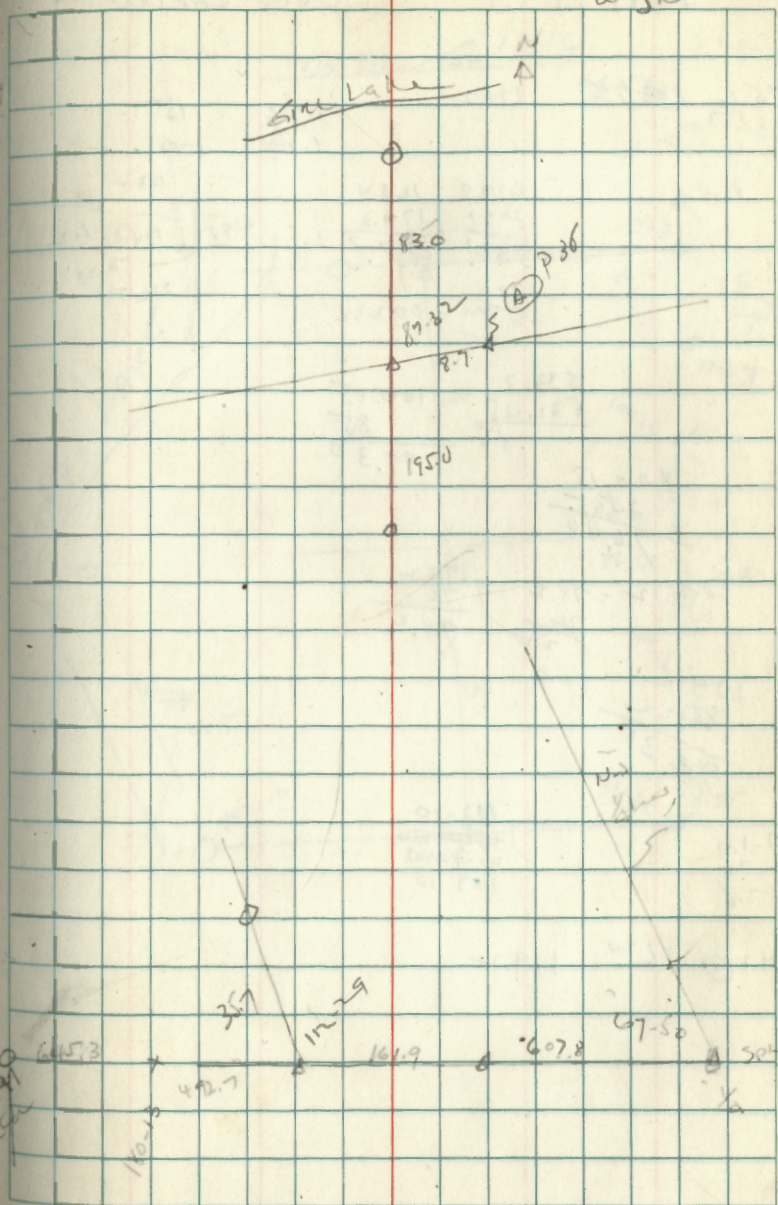
645.3

180-13

0.27



7 1/2 60' 39



9-139-26

Wagner

1325
1542

2917

2917
434

3351
3898

7249
5734

12983

200 330 199.6

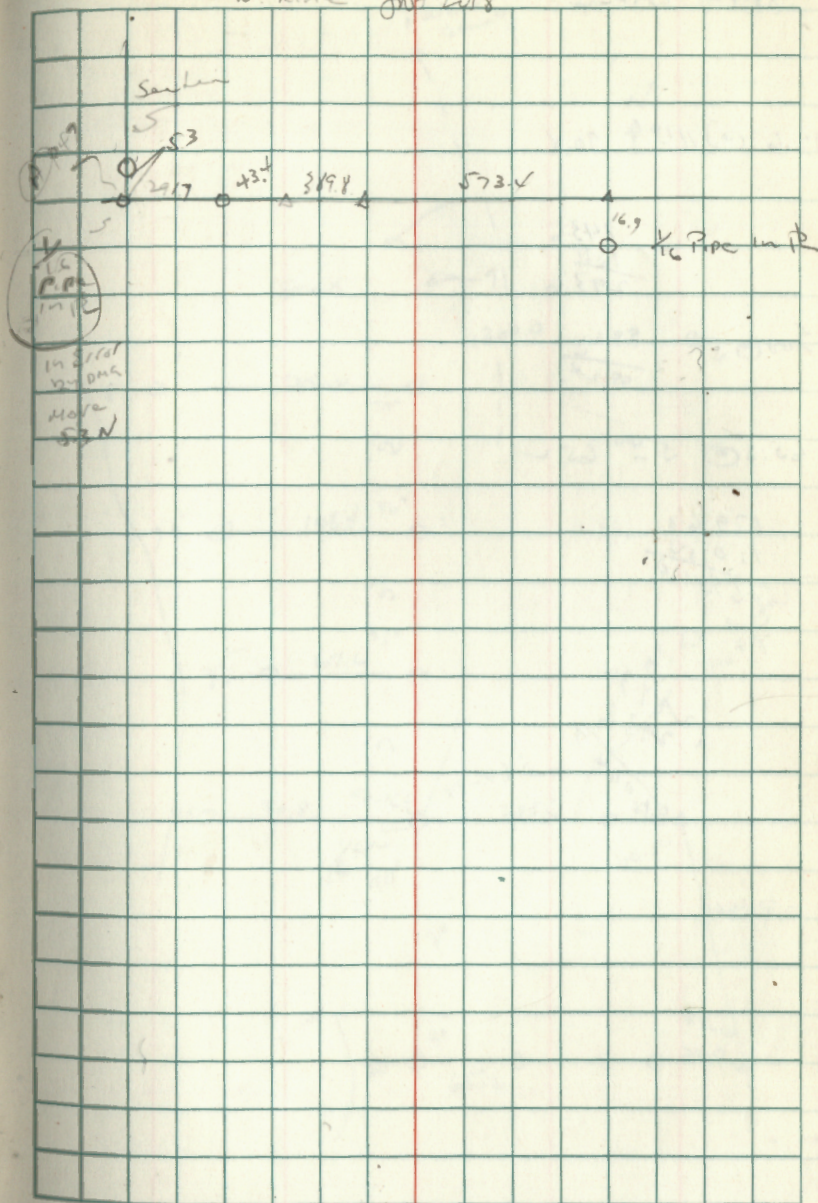
373.4

573.4

90-38
111-15
-

E on Pan N line for Litz

27 out 61
48
48



889-139-26

92.6 @ 110° 90.4

1436
130
2936

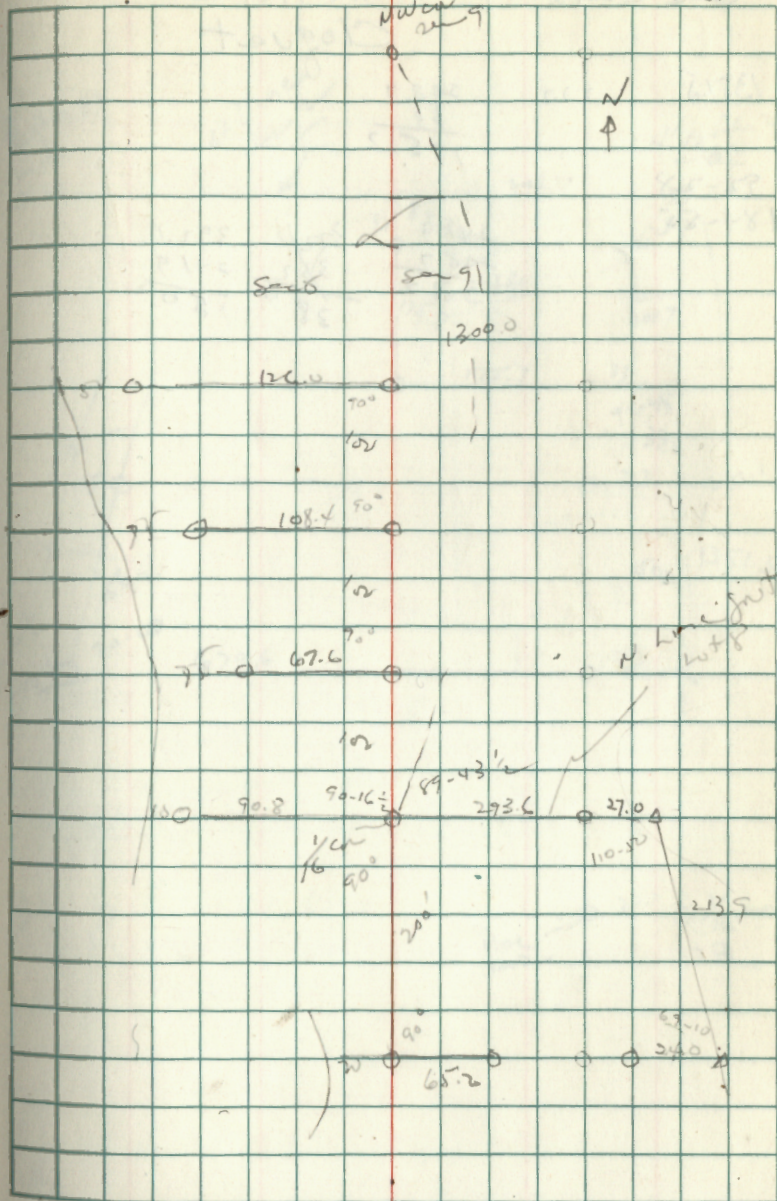
500 @ 50° 99.6
199.2
75

65.5 @ 54° 65.2

179.6
110.5
69.1

294.3
293.6
100.4

27 Aug 61 49



21- 142-27

199.0
140.7
339.7

81.5 410 81.3

339.7
- 71.8
267.9
+ 31.5
309.4
- 166.4
143.0
+ 597.9
740.9
- 81.3
659.6
+ 473.1
1132.7
- 151.9
980.8
+ 33.6
1014.4
- 472.8
541.6
+ 473.1
1014.7

74.30 10 20

4000
33.6
33.6
- 472.8
413.1

150-15
300 30

61.34

61-55

247-37 (61-54)

24
7 217
4 22
3 17

147.2 }
139.8 }
287.0

124 10 119.8

174.9

Paul Schmidt

B. Bay Lake

286.3 370.4

67.4 331.6

119.8 696.0

473.7 229.9

174.9 925.9

148.6 193.9

111.2 111.2

12.6 12.6

30.1 30.1

200 50 199.2

12.6

325.6

200 20 199.8

30.1

229.9

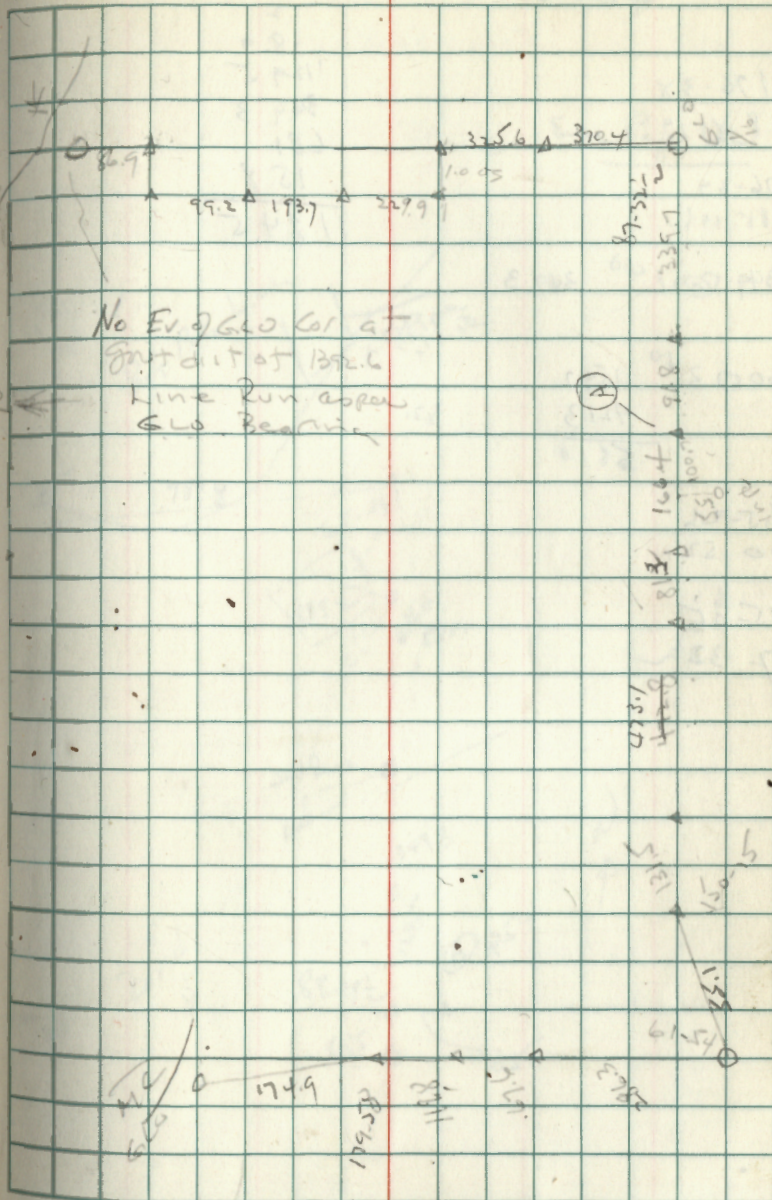
179.58

359.57

81.2 @ 10° 26.9

8 Nov 61
J. S. W. S. W.

59



21-142-27

) 389.40
178.50

130.0
283.5
413.5

130.9
140.3
116.8
388.0

157.4 @ 4° 150.9

1334.5
1006.1
328.4

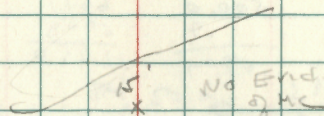
53.7
413.5
467.2
388.0
855.2
150.9
1006.1

27 Nov 61

JS wt JV

62

See Page 60

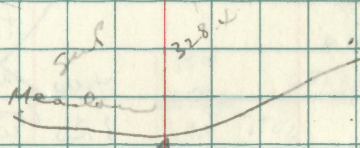


5' x No End of MC

5'

5'

No End of Cor in SWP



328.4

150.9

388.0

413.5

157.4 @ 4°

116.8

328.4

