

INDEX

3-8	5-140-28	Manders
9-13 & 29	4-140-28	Floryak
14-15	34-141-28	Austi
16-20	33-141-28	Blair
21-22, 38	28-46-25	Swing ✓
23	16-45-28	Danges
24-	15-138-26	Gordon
25-27	10-137-27	Hamilton
29	15-48-27	Modin ✓
30-37	6-46-28	Phellin
38	28-46-25	Swing ✓
39-47	28-136-27	Prompter
50	Paguat Shady Shores Lots 40-41 3rd Add Freeman	
51-55	14-140-28	Walsh
57	6-46-28	H. Sm. B
58	Aitken -	Mass Camp ✓
59	22-46-28	Puttie
60	4-43-28	Dr. Cassler
61	1-45-28	Partman
62-65	13-137-29	Schram
66	3-44-28	Munson

67- Lots 6-9 Juleburg - Dempick

79 4-140-28 check Ostana

R

5-140-28 Great Lake Monders

191.0 @ 3° 1/2

89-01
178-02

(5) South = 0.024 = 0° 08'

171 @ 12° 167.2
100.0
1217 @ 14° 1314
3986

200 @ 23° 199.8
474
2472

159.2 @ 130 1591

Note. Elk Co
has old scribbled
NP - No Co Evid.
Placed Temp at
old fence

2089
3986
6075
1272
7347
2472
9819
1591
11410
909
12319

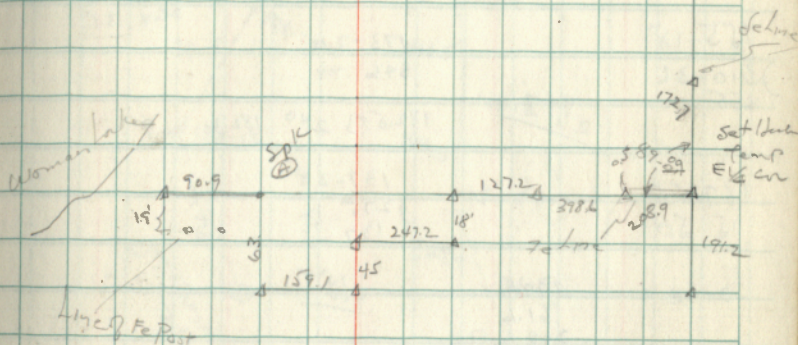
West of Ron
EW 1/4 Line

6-25-1960
down road

3

Woman Lake

High Fe Post

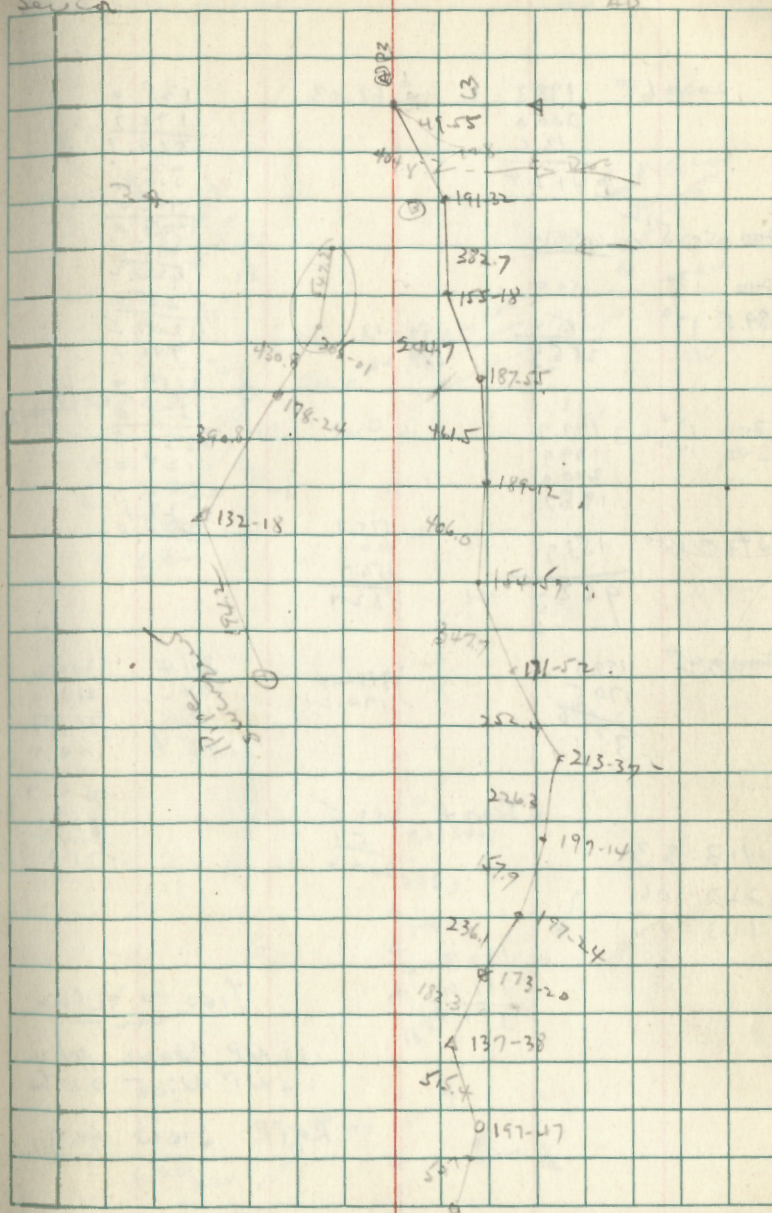


5-140-28

49-55 399 50 49	181.0 23.8 <u>200</u> 404.8	197-14 34-29 197 197-25 34-27 34-27 34-27	197-24 34-27 34-27	199.8 2
191-32 23-04 383 191	182.7 2	200 230 199.8 363 2361		
155-18 310-36 155	44.7 2	173-20 346 40 182.5 240 182.3 9		132-18 264 35
187-55 15-50 39 197 2000 2	199.9 61.6 <u>200</u> 461.5	137-38 275 16 137 36 15.5 400		
189-12 18-24 154.59 309-52 154	147.7	177-47 38-34 385 197 147.2		
171-52 343-44 171	26.3 2	205-01 50 02 177-47 38-34 385 197 147.2		
213-37 67 44 422 174 217		178-24 386 48		

Proterose la Sa
Saw Co28 out
250 1960
320
AD

4



4-140-28

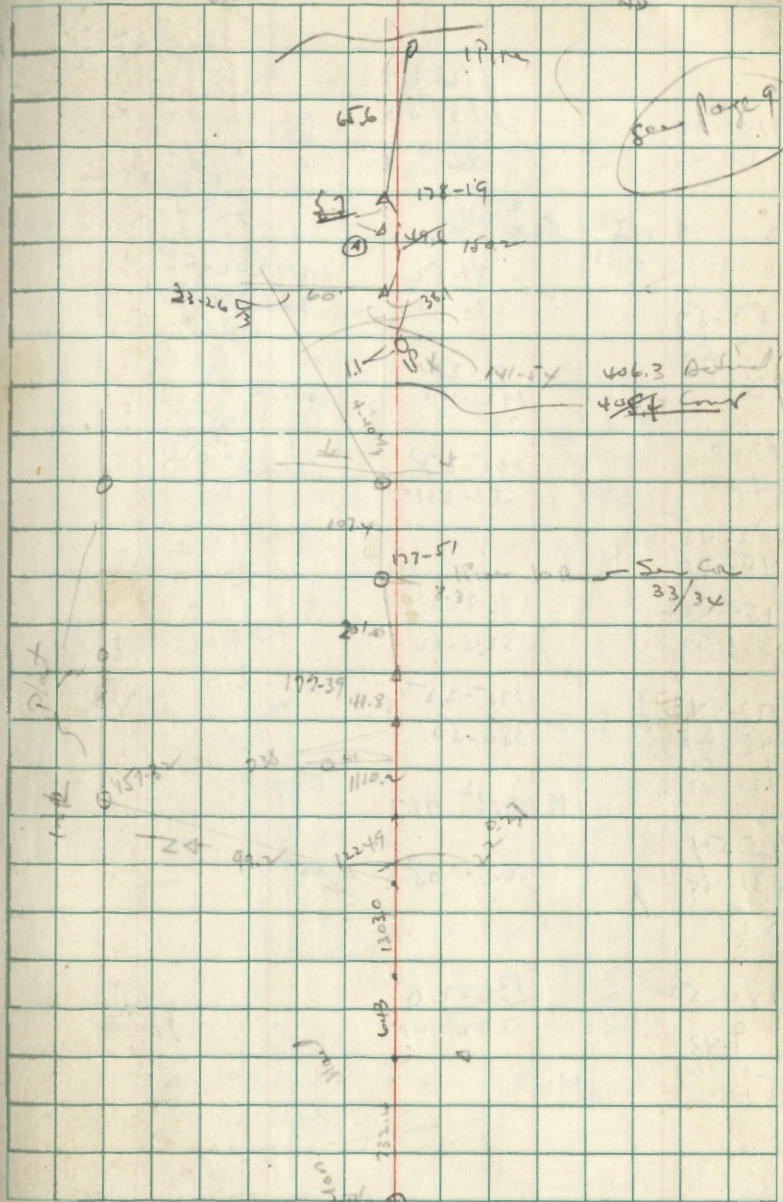
160707° 496

			643.0
	200.0	71.00	1203.0
	200.0		1946.0
20003	199.7	693 = 10.5 chs	1524.9
	43.3		3170.9
	643.0		1110.2
		33-27	4281.1
		3) 100-20(33-28)	41.8
			4322.9
2000420	199.4		201.0
			4523.9
0030°	199.7		732.0
200010	199.9		550.2
200 100	199.9	177-39	
	200.0) 255-18	141-54
200 310	199.7	177 28	65.42
200 220	104.4	2000420	162
	303.0		22-37
			45-14
			22-37
		237	41
200 800	199.6		
200 20	199.9	177 51	157-32
	200.0) 305 42	315-04
200 240	199.8	177	157
200 40	199.4	109.40	1050 1074
	28.2		
	1224.9		
		4-41	22-37
199.7 030	199.4	3) 14-02 40%	157.30
			179.69
200 0320	199.6		
200 300	199.5		
200 210	199.8		
160 200	159.9	693	400.7
	152.0	5083	107.0
		184.7	508.1
			199.6
			252.7
			6.1
			823.3
	1110.2	178-19	

E on Zan No line

3 Nov 1960

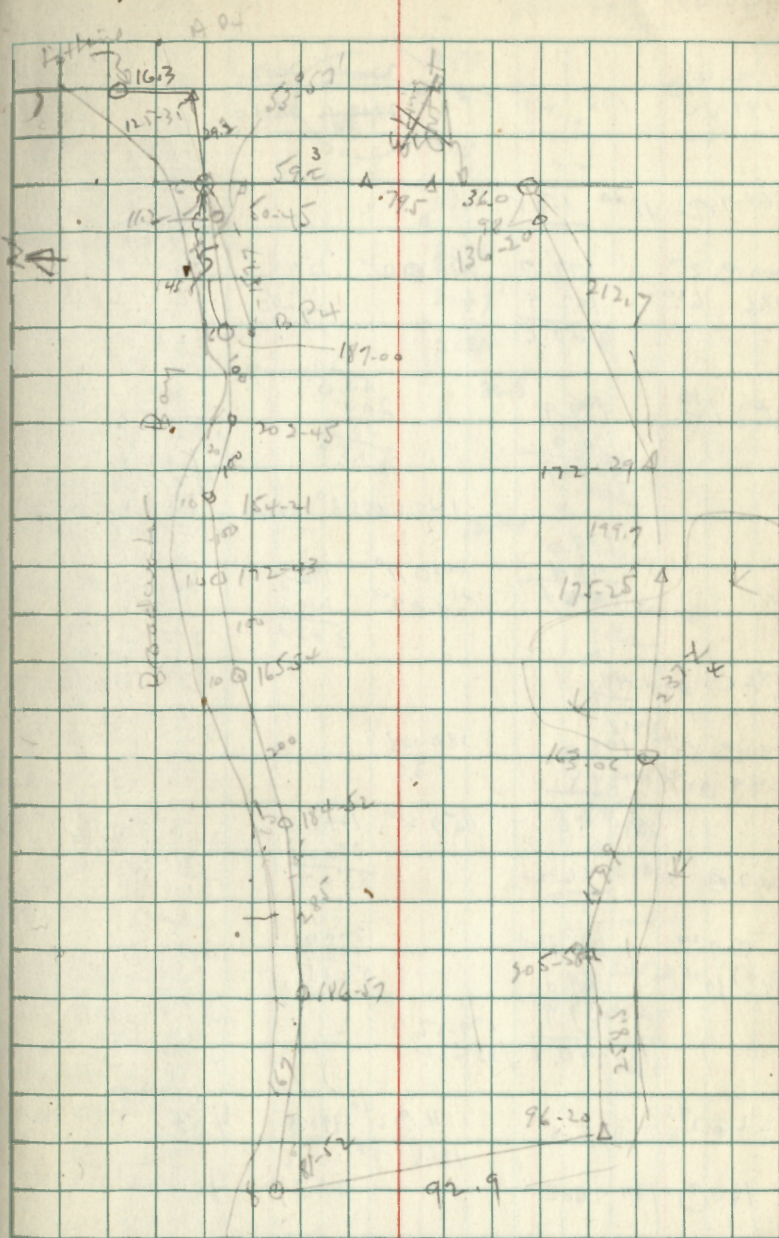
7



5 Nov-28 Manders

	186-57	
101-30	13-54	
53 48	22 14	
	116	
61.3	14 ⁴⁰	59 ³
	81-52	172-29
53-57	163-44	344-58
107 55		
53	96-21-	
	192-40	
189.00	76	
1400	205-58	
	51-54	
202-45		
45-31		
154-21+	163-06	
308 43	326-12-	
172-43	175-25	
245 25	350-50	
172 42		
	199.8012 ¹⁰	199.7
165-54		
331-49	36.1 05 ⁰ 20.0	
165		
184-52	136-20	
9.43	272 41	
364 103		
182		

7 Nov 1960 8

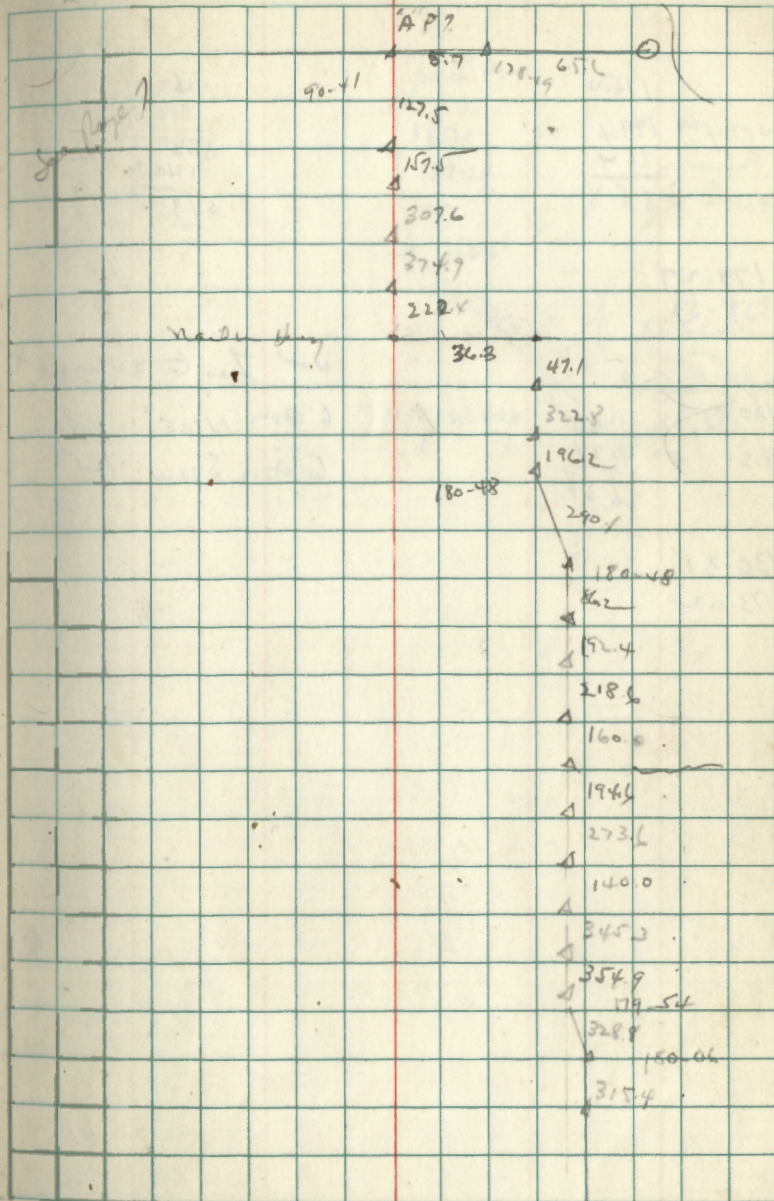


4-140.28

90-41				
181-22				
70 80				
160.7 @ 11 ²⁰	157.5			
200 @ 3 ¹⁰	199.7	1539 @ 12 ³⁰	150.2	
108.6 @ 6 ³⁰	107.5		44.4	
	307.6		194.4	
180 @ 1 ⁴⁶	179.9		55.0	
	195.0		200	
	374.9		18.6	
			273.0	
		140.1 @ 3 ¹⁰	140.1	
	180.0		200 @ 11 ¹⁰	196.3
	42.4		160.4 @ 7 ¹¹	149.0
	222.4			345.3
47.6 @ 8 ¹⁰	47.1			
200 @ 8 ¹⁰	198.0	180-48		
124.9 @ 2 ¹⁰	124.8	136		
	322.8			
196.7 @ 4 ¹⁰	196.2	150 @ 2 ¹⁰	164.9	
			190.0	
185 @ 9 ²⁰	183.2		200.0	
73 @ 19 ¹⁰	69.0		128.8	
	37.9		328.8	
	290.1	179-52		
		359-52		
192.6 @ 2 ³⁰	192.4	191.0 @ 2 ¹⁰	190.8	
		125.6 @ 7 ¹⁰	124.6	
160 @ 120	160.2		315.7	

So. on Paw
E. Line

Exam number 1960
S.W. to W.H.O.



4-140-28

	1750
2000 430	199.4
	114
	<u>3858</u>

179-29
358-57

150.0	12	1467
118.5	9	<u>1171</u>
		2638

136-31
273-02

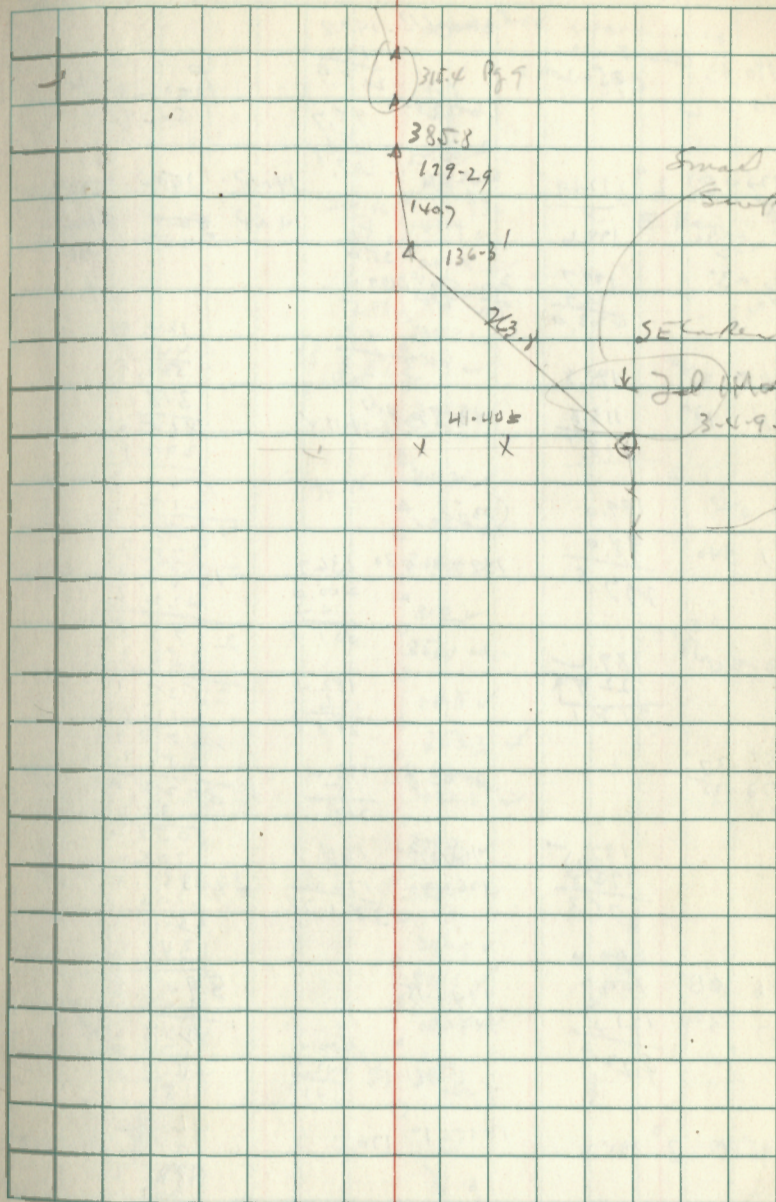
463.7
<u>3858</u>
5039.7
<u>1407</u>
5180.4

New Test to 5600 ft

6" Ozn N105 14.8

6" Ozn S70W 12.5

9 NW 1960
to WT AD 10



4-14-28

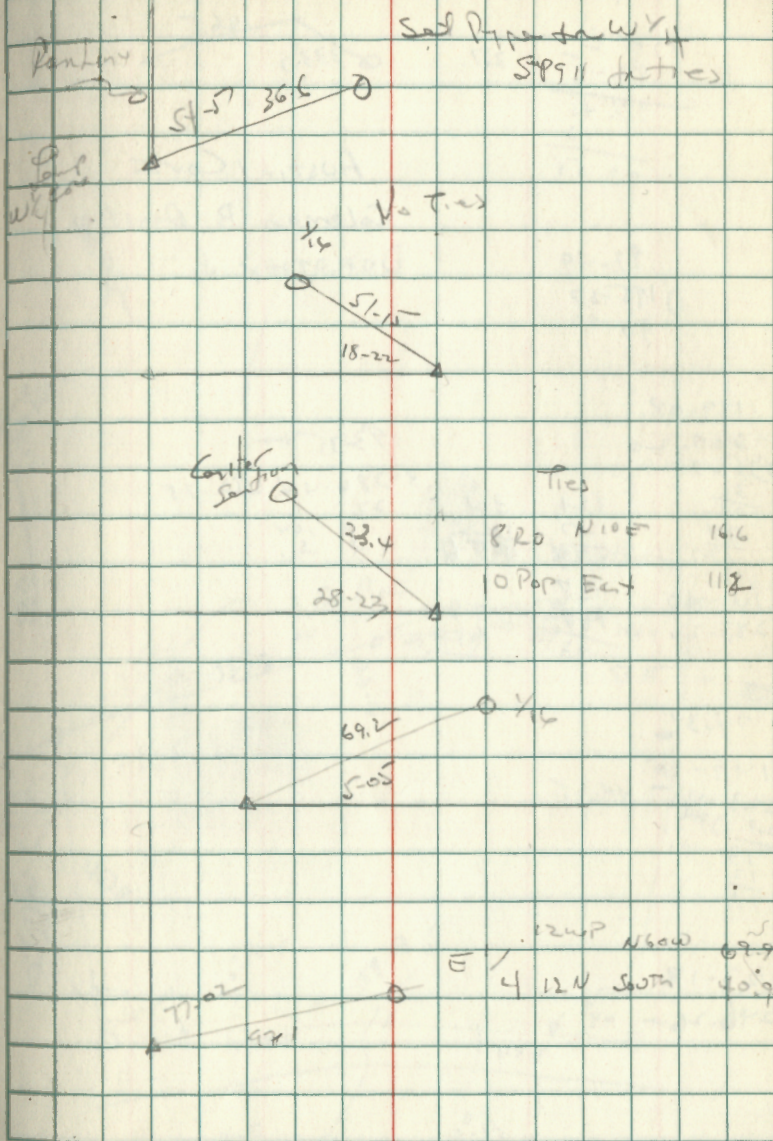
90° 10'

John G

13

S + C

to
WT
23



Grant hts 82V

run 34-141-28

179.6	357
82-15	
97.41	
13	
97.54	

465
3333

AUSTIN COVE

Coleman B. Austin

DOROTHY J.

97-49

195-37
97 97

189-08

3-207-20

3) 267

3/26

27/27

324

47

138

283-20

138

453

324

4654

199

62

9335+

3-280-114 453-35

27

10 104

3 54

II

74-36

149-10

3-223-45 74 35

27

13

12

123-13

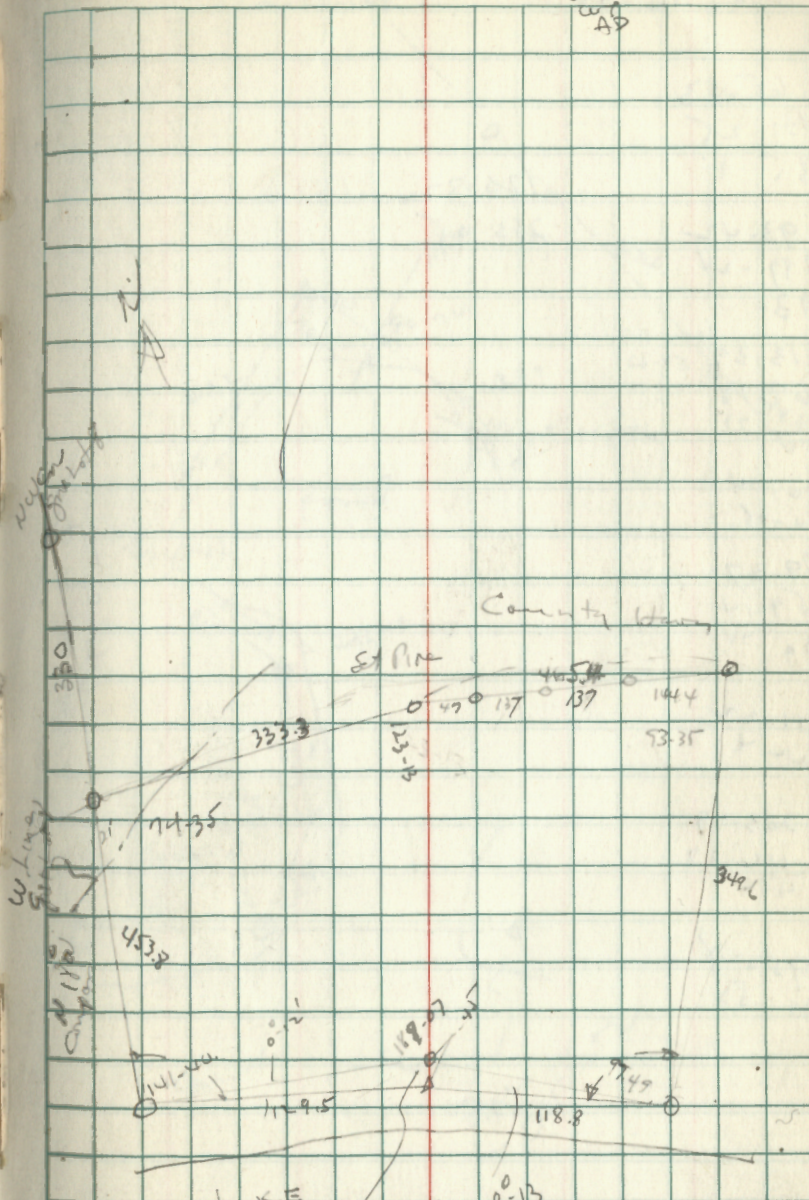
246-26+

Dec 1 1960

SS

AD

14



County Map

ST PIN

N. Line

W. Line

GIRL LAKE

Point of Quality

33-141-28

Blair

$$\begin{array}{r} 151.1 \\ 1139 \\ \hline 37.5 \end{array}$$

216.1

45

$$\begin{array}{r} 333-50 \\ 166 \end{array}$$

112-06

224-12

179 @ 340

178.7

178.7

29

217.7

168.8

99.0

2.8

268.6

10006¹³ 98.4

179.5 178.7

368

278.8

102.0

26.8

128.8

291.17

145.37

$$\begin{array}{r} 79.4 \\ 296 \\ \hline 109.0 \end{array}$$

88-12

176.23

264.34

88-11

179

139

368

486

38

47.4

47.0

47.0

47.0

47.0

47.0

47.0

47.0

47.0

47.0

47.0

47.0

47.0

47.0

47.0

47.0

47.0

47.0

47.0

47.0

47.0

47.0

47.0

47.0

47.0

47.0

47.0

47.0

47.0

47.0

47.0

47.0

47.0

47.0

47.0

47.0

47.0

47.0

47.0

47.0

47.0

47.0

47.0

47.0

47.0

47.0

47.0

47.0

47.0

47.0

47.0

47.0

47.0

47.0

47.0

47.0

47.0

47.0

47.0

47.0

47.0

47.0

47.0

47.0

47.0

47.0

47.0

47.0

47.0

47.0

47.0

47.0

47.0

47.0

47.0

47.0

47.0

47.0

47.0

47.0

47.0

47.0

47.0

47.0

47.0

47.0

47.0

47.0

47.0

47.0

47.0

47.0

47.0

47.0

47.0

47.0

47.0

47.0

47.0

47.0

47.0

47.0

47.0

47.0

47.0

47.0

47.0

47.0

47.0

47.0

47.0

47.0

47.0

47.0

47.0

47.0

47.0

47.0

47.0

47.0

47.0

47.0

47.0

47.0

47.0

47.0

47.0

47.0

47.0

47.0

47.0

47.0

47.0

47.0

47.0

47.0

47.0

47.0

47.0

47.0

47.0

47.0

47.0

47.0

47.0

47.0

47.0

47.0

47.0

47.0

47.0

47.0

47.0

47.0

47.0

47.0

47.0

47.0

47.0

47.0

47.0

47.0

47.0

47.0

47.0

47.0

47.0

47.0

47.0

47.0

47.0

47.0

47.0

47.0

47.0

47.0

47.0

47.0

47.0

47.0

47.0

47.0

47.0

47.0

47.0

47.0

47.0

47.0

47.0

47.0

47.0

47.0

47.0

47.0

47.0

47.0

47.0

47.0

47.0

47.0

47.0

47.0

47.0

47.0

47.0

47.0

47.0

47.0

47.0

47.0

47.0

47.0

47.0

47.0

47.0

47.0

47.0

47.0

47.0

47.0

47.0

47.0

47.0

47.0

47.0

47.0

47.0

47.0

47.0

47.0

47.0

47.0

47.0

47.0

47.0

47.0

47.0

47.0

47.0

47.0

47.0

47.0

47.0

47.0

47.0

47.0

47.0

47.0

47.0

47.0

47.0

47.0

47.0

47.0

47.0

47.0

47.0

47.0

47.0

47.0

47.0

47.0

47.0

47.0

47.0

47.0

47.0

47.0

47.0

47.0

47.0

47.0

47.0

47.0

47.0

47.0

47.0

47.0

47.0

47.0

47.0

47.0

47.0

47.0

47.0

47.0

47.0

47.0

47.0

47.0

47.0

47.0

47.0

47.0

47.0

47.0

47.0

47.0

47.0

47.0

47.0

47.0

47.0

47.0

47.0

47.0

47.0

33-141-28

Blair

181-50

3-41

107-13

21425

170-37

23

$$\begin{array}{r} 341 \ 13 \\ 170 \ 36 \\ \hline \end{array}$$

3-151-49

$$\begin{array}{r} 351 \ 109 \\ 170 \ 36 \\ \hline \end{array}$$

174-08

348 16

150

$$\begin{array}{r} 43.5 \\ \hline 56.5 \end{array}$$

134-19

268-38

172-55

$$\begin{array}{r} 345 \ 51 \\ 172 \ 116 \\ \hline \end{array}$$

172-55

184-04

8-09

193-25

26 50

217-50

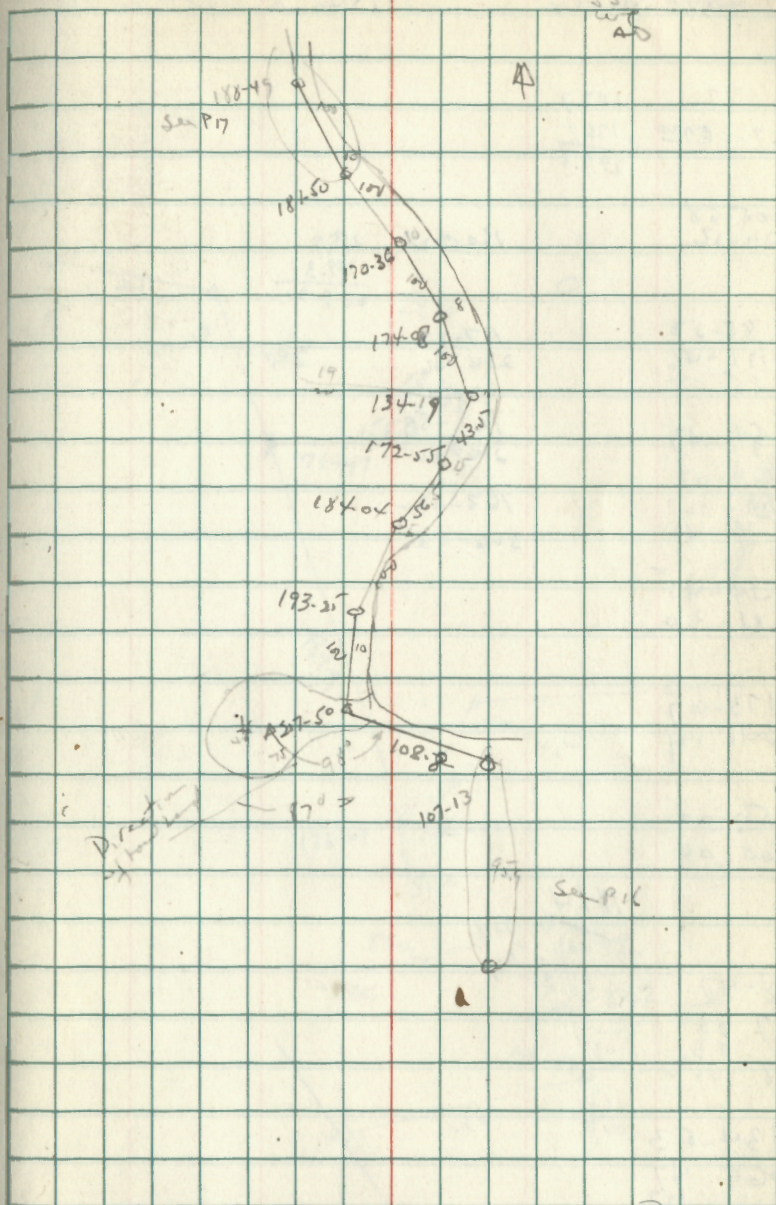
75 40

$$\begin{array}{r} 217 \\ \hline \end{array}$$

95-18

7 Dec 1960

48



33-41-27

Bear

103.7	103.7
197.7	1961
	<u>299.8</u>

105-58
211-52

160020

159.9
<u>49.3</u>
209.2

85-53
171-46
85-106117-23
234 4689-43
2) 269-07
~~84~~ 127
29 42162-89
226-01163-02
326-03140-45
281-30173-07
346 14150-02
300 04184.4
5

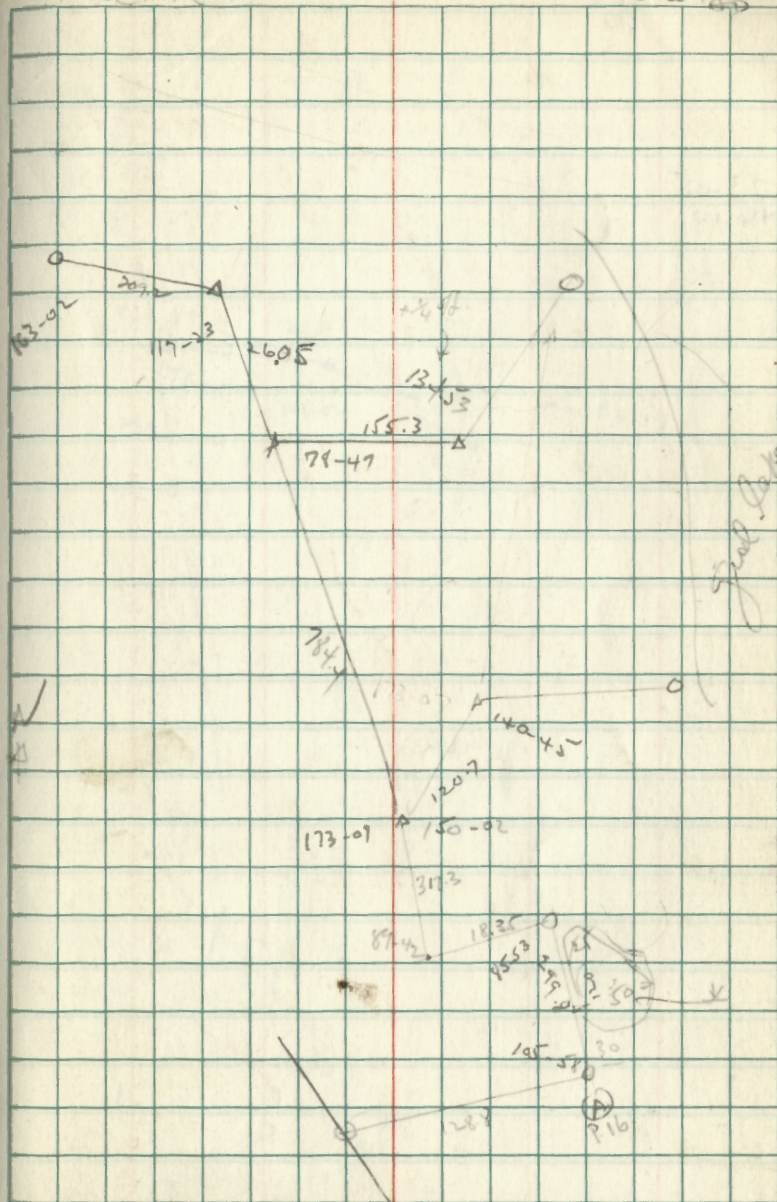
78-47

159 33
78 93
78 46

134-53

269 47
134 107
53

Back line

T.D. 1960
J.W.F. 19

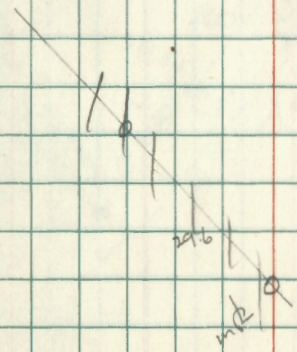
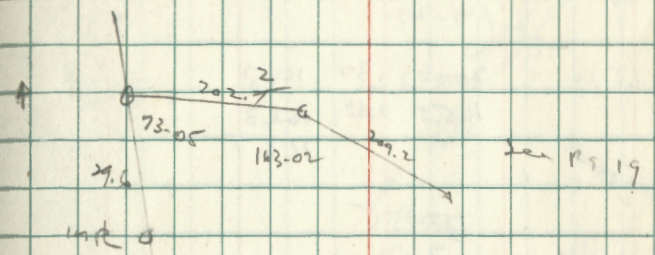
33-41-28

73-05
14610

10 12 1960

Back line

JS
AT
AD

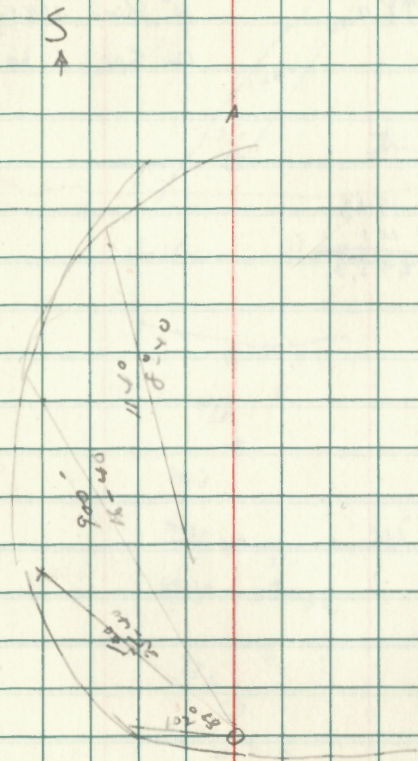


14-140-28

Shore Traverse

2 Mar 1961

53



14 150-28

Tires do MC

150 @ 830 98.9

98.9
93.6

5.3

4" Bunk N80E 16.4

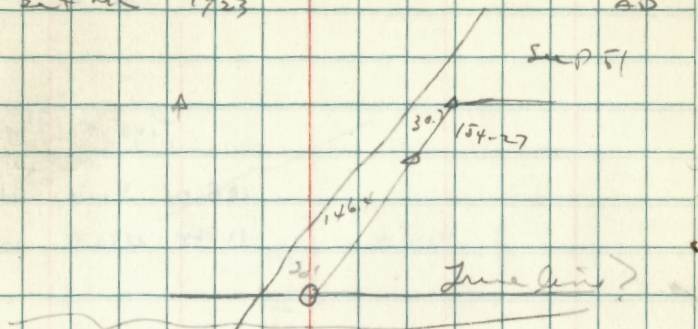
12 Spr S 30E 8.4

181-11 1943
90 7' 10208 101
7' 295.3

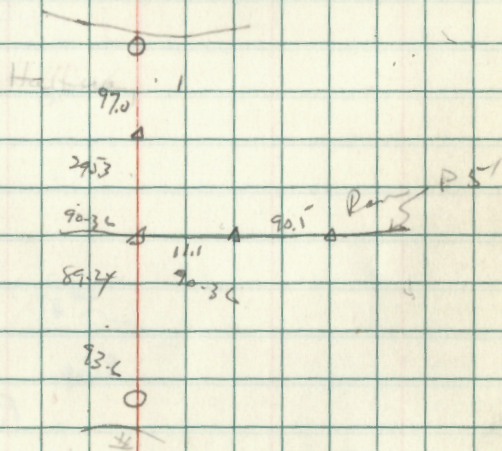
3 March 57

Ent MC 14/23

AS
WT
AD



Halfway Pipes



14-140-28

Pins to Pipe on
str

10 Birch South 4.2

12 Pop N 80 E 12.8

Pins to SE Cor

30 WP N 80 E 37.4

10 Birch South 24.0

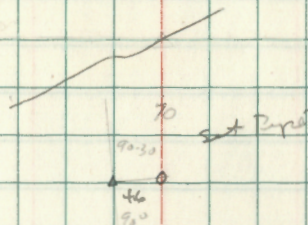
3 Mar 1961

57

Establish

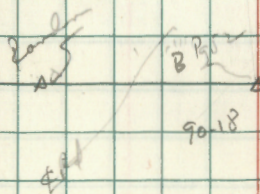
E-line Sec 14

10
12
25



8.52

24.2



110.7

SE Cor

ckc Distances
4-14-28

200 30 400.0
199.7
43.7
643.4

200 410 400.0
199.5
200.0

200 150 199.9
200.0

200 30 199.8

105 20 104.9
1303.1

200 810 3 200.0
197.6
400.0

200 230 199.8

200 450 199.3
28.5
1225.2

2000 320 55.0
199.7

200 300 199.7

200 20 199.9

200 20 199.9

199.9

111.8

1110.9

110.8 140 107.5

200 30 199.2

1.2

201.2

111.2
643.4

1303.1

1225.2

1110.9

41.8

4324.4

107.5

201.2

98.4
197.6