

INDEX

|             |  |                   |
|-------------|--|-------------------|
| 2-7, 52, 53 | 1-40-25                                      | McKenna ✓         |
| 8           | 33-45-30                                     | Bram ✓            |
| 9-10        | 10-137-28                                    | Harrison ✓        |
| 11          | 9-137-28                                     | Shepherd ✓        |
| 12          | 9-138-26                                     | Uglen ✓           |
| 13-20, 22   | 21-46-28                                     | Rushmore ✓        |
| 21, 32-37   | 9-138-26                                     | Uglen ✓           |
| 23-26       | 31-137-27 & 1-136-26                         | Fernlund ✓        |
| 27-31       | 9-135-27                                     | Isadore ✓         |
| 32-37       | 9-138-26                                     | Uglen ✓           |
| 38          |  | Archald. Krumm ✓  |
| 39-40       | 3-136-28                                     | Butter ✓          |
| 41-43       | 1-45-28                                      | Osten ✓           |
| 44-47       | 20-46-29                                     | C. Johnson ✓      |
| 48          | Outlot 1 Arch 2 <sup>nd</sup> Divd - Stenzel |                   |
| 49          | 33-136-26                                    | Fuehr ✓           |
| 50-51, 55   | 12-140-28                                    | Baller ✓          |
| 52          | Janin Lot                                    | Ballig ✓          |
| 56          | 34-138-26                                    | Dobson ✓          |
| 57-60       | 4-141-26                                     | Lavelle ✓         |
| 61          | Crabby Lot                                   | Wade O'Brien ✓    |
| 62, 63, 81  | " "  | Farrar ✓          |
| 65-73       | 3-4-133-28                                   | Kelkelber ✓       |
| 82          | Lot 13                                       | Raymond Acheson ✓ |
| 80          | Crabby Lot                                   | Opalen ✓          |
| 79          | " "  | Hempkey ✓         |



1-140-27 M. Ferry

110.1 @ 13° = 107.7      690.1

|       |       |
|-------|-------|
| 114.0 | 196.0 |
| 76.9  | 27.8  |
| 107.1 | 223.8 |
| 52.8  |       |
| 159.9 |       |

181-43<sup>+</sup>

363-27  
181

|               |       |
|---------------|-------|
| 198.9 @ 13° = | 197.7 |
|               | 46.2  |
|               | 243.9 |

141-144  
263-28  
141-44

New Ties to SW Cor

1. P. (circled) Ser 36-141-27

14" DP SWE 19.5

8" DP SWL 31.3 Slope

Note Cor. pit from  
old ties

1. P. (circled) New Ties to NW Cor

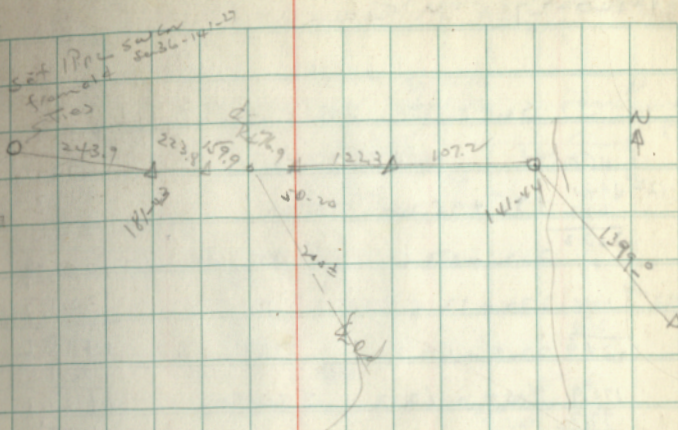
Per 1-140-27

12" DP SWW 13.2 Slope

8" DP NW 10.4

16 Jan 68

2





1-140-27 M'Kam

SW cont SE on Col Hwy

|                              |                    |              |
|------------------------------|--------------------|--------------|
| 450                          | -5367.1            | 4792         |
| 179.0-12 <sup>00</sup> 294.0 | 195+952 SE on      | 3263         |
| 642                          |                    | 2710         |
| 3032                         | 212+53.6 POT Shwin | 10529        |
| 20003 <sup>40</sup> 1996     | " "                | 327.7        |
| 370                          |                    | 14106        |
| 246                          | 222+138            | 2015         |
| 1759                         | 229+473            | 16121        |
| 97.2                         | " "                | 1456         |
| 273                          | 249+62.3 SW on     | 17577        |
| 470.4                        |                    | 1867         |
| -2                           |                    | 1944.4       |
| 470.2                        |                    | 3027         |
| 2000                         | 93-39              | 2297.1       |
| 100 @ 16.0                   | 187-17             | 2257         |
| 47.9 @ 9.50                  | 73-77              | 2522.8       |
|                              | 354                | 392.7        |
|                              |                    | 303.2        |
|                              | 135.0              | 2346         |
| 200 @ 6.00                   | 199.0              | 3453.3       |
|                              | 18.1               | 273.1        |
|                              | 3527               | 3726.4       |
|                              |                    | 35.6         |
| 470.2                        | 200 @ 2.0          | 199.8 4078.0 |
| 381.3                        |                    | 25.9 358.3   |
| 173 @ 8.0                    |                    | 2257 4026.0  |
|                              |                    | 208.6        |
|                              | 157-05             | 4645.7       |
|                              | 314-10             | 2885         |
|                              |                    | 4933.6       |
| 200 @ 5.0                    | 138.70/70          |              |
|                              |                    |              |
|                              | 200 @ 4.0          | 199.2        |
|                              | 193.70 25          | 193.5        |
|                              |                    | 2927         |

18 Dec 54 Snow 3

Par North on Westline

|                        |        |        |
|------------------------|--------|--------|
| 45-24                  | 2885   | 160.00 |
| 790-48                 | 208.5  | 1063   |
| 414 B <sup>2</sup> 403 | 388.5  |        |
| 141-08                 | 357.6  |        |
| 273.1                  | 273.1  |        |
| 234.6                  | 234.6  |        |
| 303.2                  | 303.2  |        |
| 392.7                  | 392.7  |        |
| 157.05                 | 157.05 |        |
| 225.7                  | 225.7  |        |
| 352.7                  | 352.7  |        |
| 186.7                  | 186.7  |        |
| 145.0                  | 145.0  |        |
| 2015                   | 2015   |        |
| 3277                   | 3277   |        |
| 2314                   | 2314   |        |
| 381.3                  | 381.3  |        |
| 470.2                  | 470.2  |        |
| 93.39                  | 93.39  |        |

San Co SW 26  
40.3  
145-24  
160.00  
1063  
Scribed Baseboard  
Found 4" Sqd Post on frd. Rotted off Post not found  
San West + Purple Corner  
+ Nails in  
P.P. - NW - 46.15  
P.P. - SW - 218.85  
Rand Co. Survey Line



1.40-27

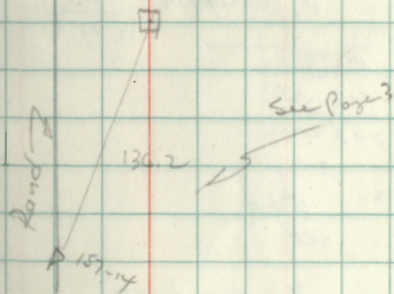
New  
Pies to West 1/4 cr  
(Scribed) 12 Bars N80W 13.1  
14 RD West 17.2  
14 Maple 32.0

129-14+  
314.29

128.0  
127.9 910 136.2

22 Dec 58  
AS  
RV

Set 3" Teakwood Sqd Post  
for W 1/4 sec 1  
Found old scribed Ran wood  
" 4" Post - Sqd. Rolled off  
" Root of 4" Sq Post.









1-140-27

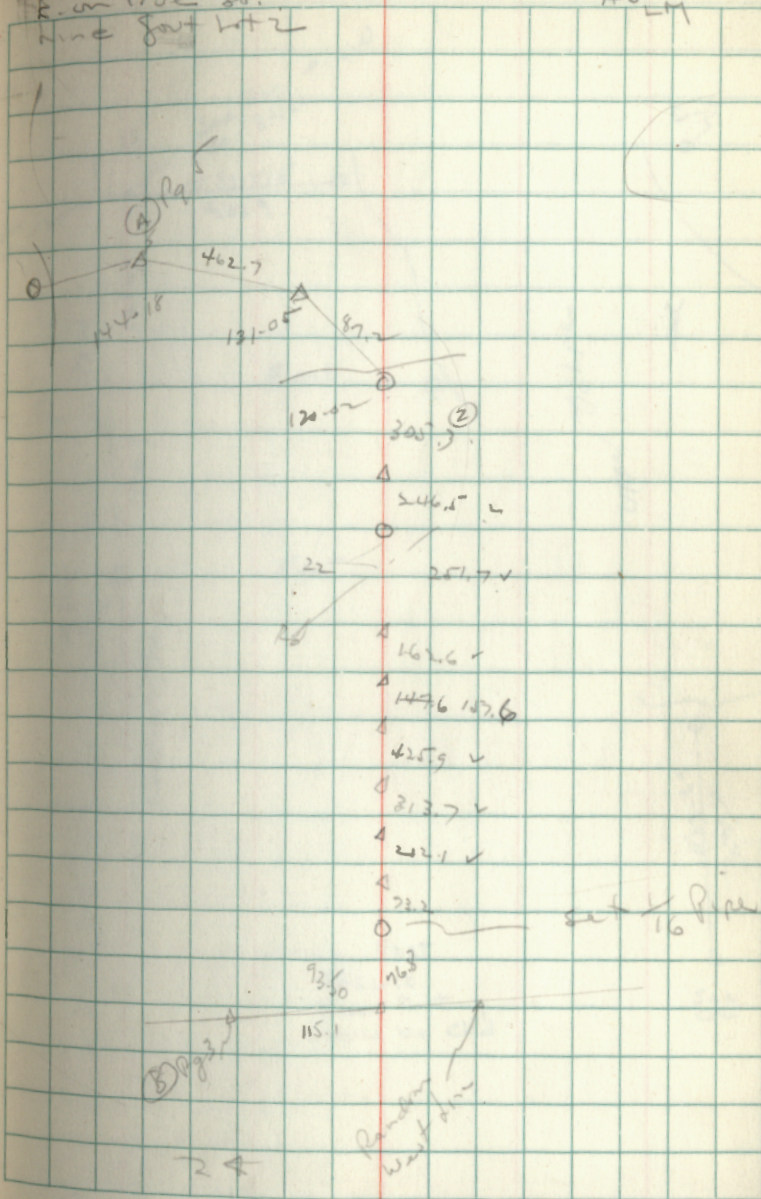
|            |        |        |        |
|------------|--------|--------|--------|
|            |        |        | 76.8   |
|            |        |        | 73.2   |
| 187-40     | 150.0  |        | 212.1  |
| 93 SW      | 76.8   |        | 313.7  |
|            | 72.2   |        | 625.8  |
|            |        |        | 425.9  |
| 505 @ 240  | 199.8  |        | 1101.7 |
|            | 12.3   |        | 157.6  |
|            | 221    |        | 1289.3 |
|            |        |        | 162.6  |
|            |        |        | 1421.9 |
|            |        |        | 251.7  |
| 200 11 40  | 2195.8 |        | 1673.6 |
| 102.2 12°  | 99.9   |        | 246.5  |
|            | 180    |        | 305.7  |
|            | 183.7  |        | 2225.8 |
|            | 31     |        |        |
| 200 220    | 199.8  |        |        |
|            | 34.0   |        |        |
|            | 192.1  |        |        |
|            | 425.9  | 131-05 |        |
| 159.5 840  | 157.6  | 262-09 |        |
|            |        | 87.2   |        |
| 165.5 1040 | 162.6  | 120-02 |        |
| 200 12°    | 194.8  | 240-04 |        |
|            | 56.9   |        |        |
|            | 251.7  | 144-18 |        |
|            | 46.5   | 288-36 |        |
|            | 2      |        |        |
|            | 246.1  |        |        |
| 200 530    | 159.1  |        |        |
|            | 106.2  |        |        |
|            | 503    |        |        |

29 Dec 58

6

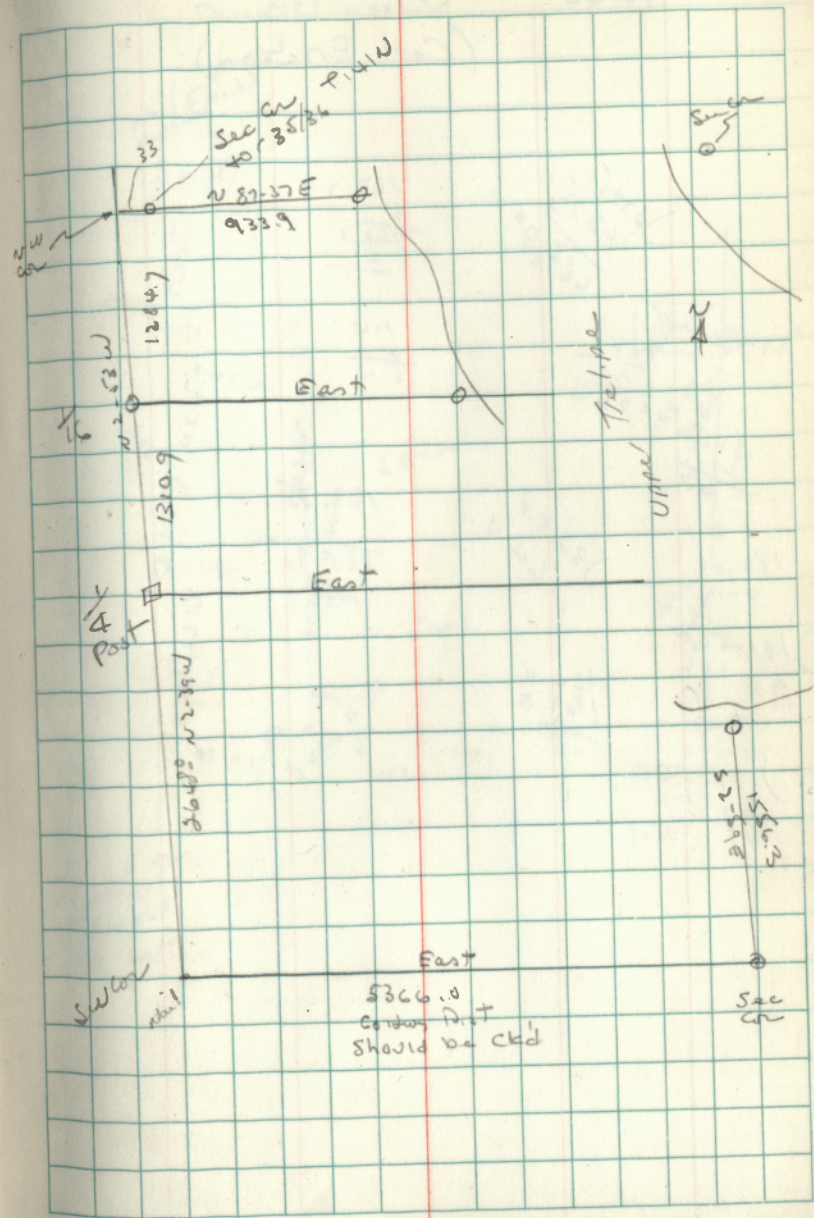
F. on True So.  
Line East Lot 2

ADLM





1-140-27 McKenna





Sec 12 - 140-28

Boller  
Raman

90  
16.4  
21.5  
1.5  
200

200  
199.9  
44.9  
444.8

New Lies

W 1/4 Sec 12  
IP line in W. Part  
of Road

600 @ 3°  
1599.1  
200.  
121.9  
921.0

14 Maple S50W 34.3  
10 Maple S25E 27.5

146.2 @ 5° 145.6

SW on IP line  
W. Part of Road

200.0  
80  
280.0

REPP South 25.35  
10 Bird N 10 W 7.7  
10 Bird N 45 E 24.4

200 @ 7.5° 178.1  
109.15 @ 7.3° 108.2  
306.3

2551.9  
77.8  
2629.7

444.8  
921.0  
1366.8  
1486  
285  
179.64  
232.5

200  
200.0  
14.9  
215.9

2028.9  
306.3  
2335.2  
215.9

171-13  
342-40

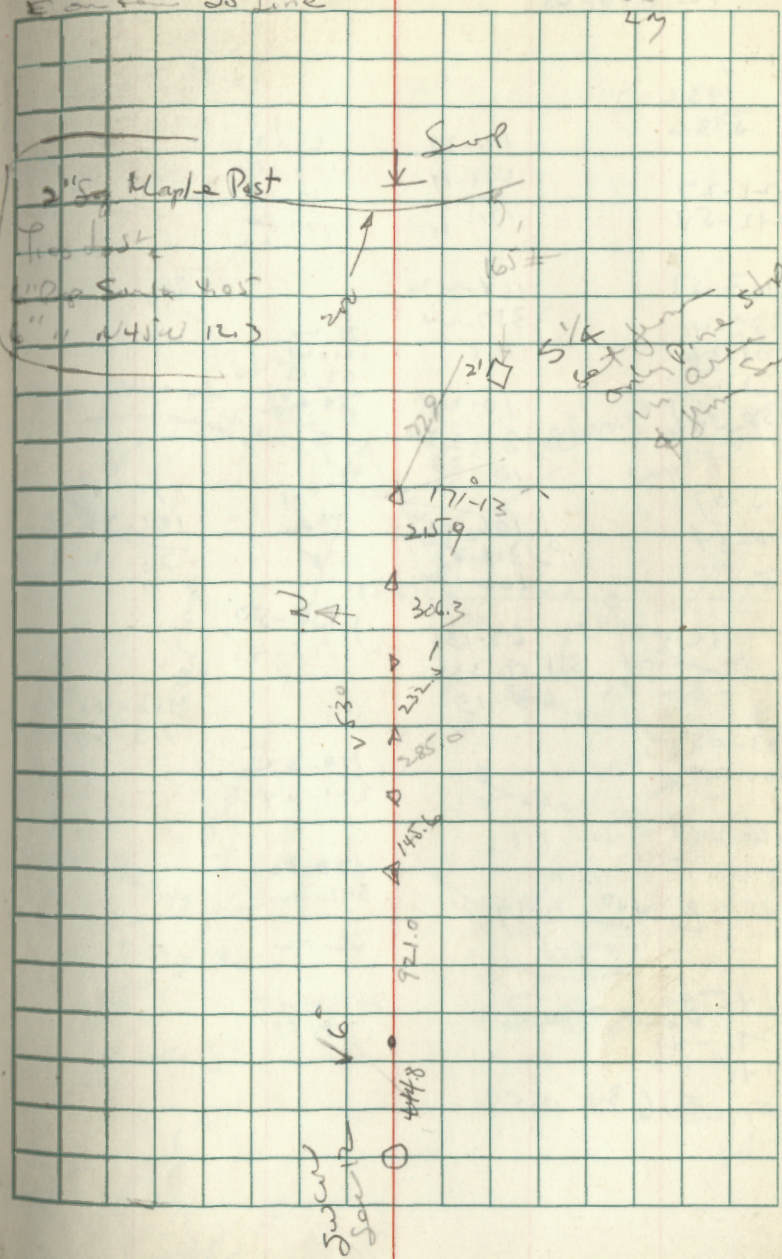
80.1 @ 13.4° 77.9

2551.1

16 April 53 50

E on Pa So Line

SS  
4y





12-140-28

4  
193.6  
593.6

121-27  
242-54

153-57

307-41  
3) 101-31  
462.31  
153.50

155-37

3) 311-14  
155

132.3  
2

103-05  
206-10

106.20 9.00 143.6

145.30 4.00 144.7

145-53

271-47  
141

107.00 6.30 105.8

171-39

343-17

171.77  
38

168-42

3) 337-24  
168

10-28  
3) 31-23  
10 83  
24

3) 106-19  
318-55  
106-18 1/2

3) 63-13  
187-39  
63-13

63-13

106.88

10.28

179.84  
60

175-20

121-27

63-13

359.60

179.6

101-31

78.25

1) 106-50  
58.25

106-45  
313-30

110-32

221-04

170-30

341.00

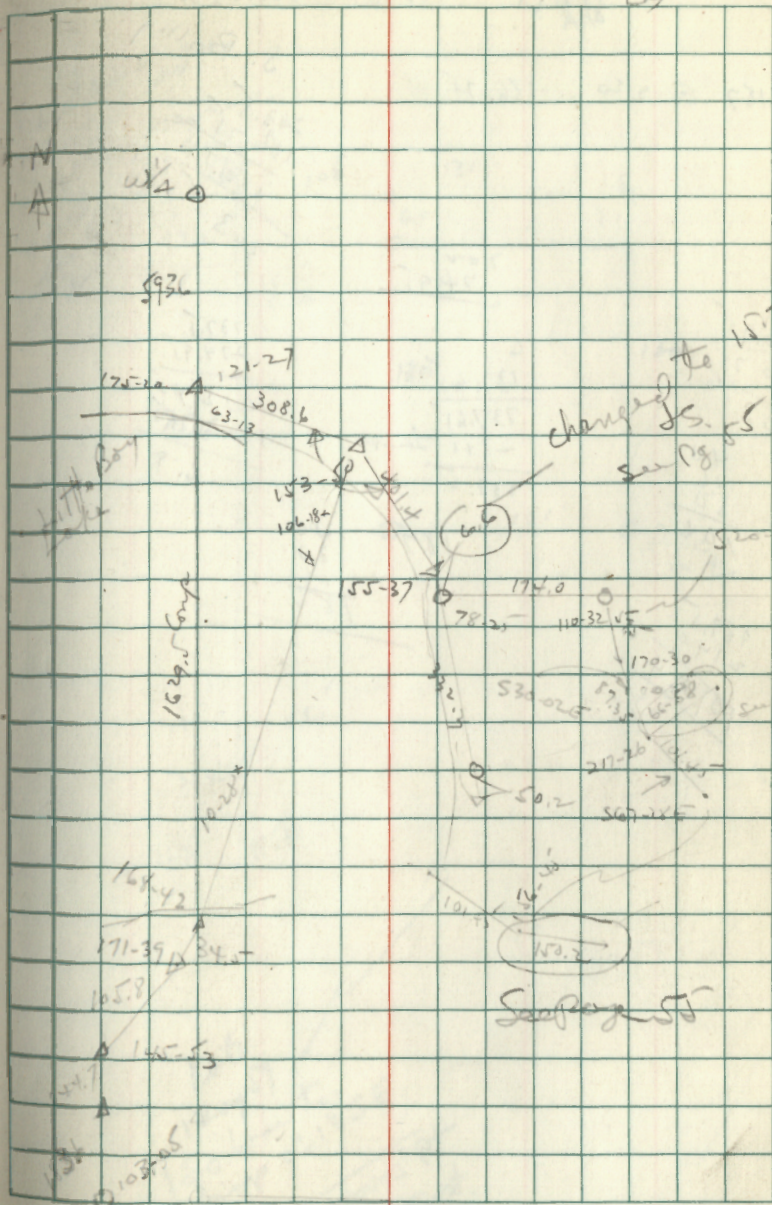
66-52

217-26

74-51

424

28  
27 April 57 51  
55  
57





Luts 4-5-12-13

Bull

W. J. Hunter

J. Bollig

157 @ 220 186.75

35.8

11

200  
249.5

16.25

16.75

203

40

16

50

106

137.5

274.9

101.24

6.9

100.1

137.65

737.61

- 11

737.4

187

140

30

16

186

737.5

274.91

1012.45

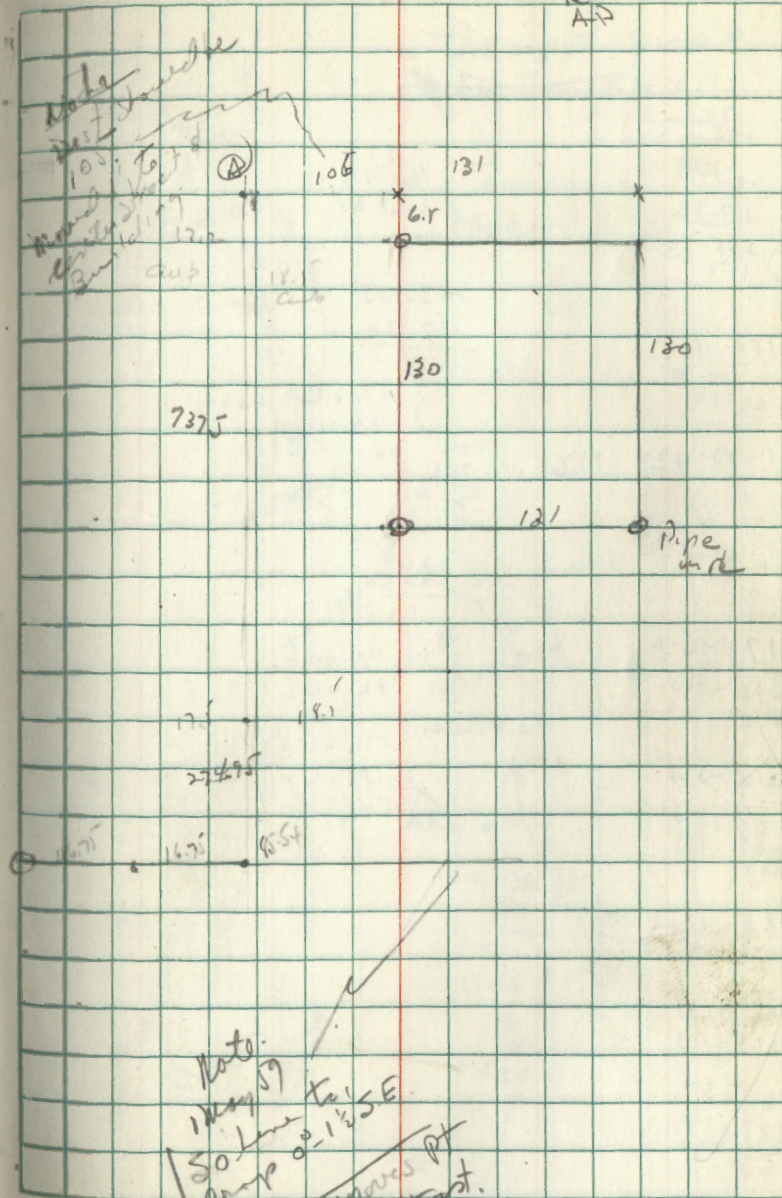
100.1

6.9

18 April 59

52

50  
40



Note:

1 May 59

50 line to

drop @ 1 1/2 SE.

This moves Pt

A .4 East.



1-140-27 McKenna

|                             |       |  |
|-----------------------------|-------|--|
| 118-30                      | 156.8 |  |
| $\frac{90}{28-20}$          |       |  |
| 117-36                      |       |  |
| $\frac{235-12}{117}$        |       |  |
| 183-41                      |       |  |
| $\frac{267-22}{183}$        |       |  |
| 76.9 @ 4 <sup>20</sup> 78.6 |       |  |
| 121 @ 6 <sup>0</sup> 120.3  |       |  |
| 178-24                      |       |  |
| $\frac{356-48}{178}$        |       |  |
| 218-54                      |       |  |
| $\frac{77-48}{437}$         |       |  |
| 218                         |       |  |
| 188-42                      |       |  |
| $\frac{17-25}{377}$         |       |  |
| 157-31                      |       |  |
| 315-03                      |       |  |
| 165-37                      |       |  |
| $\frac{331-14}{165}$        |       |  |

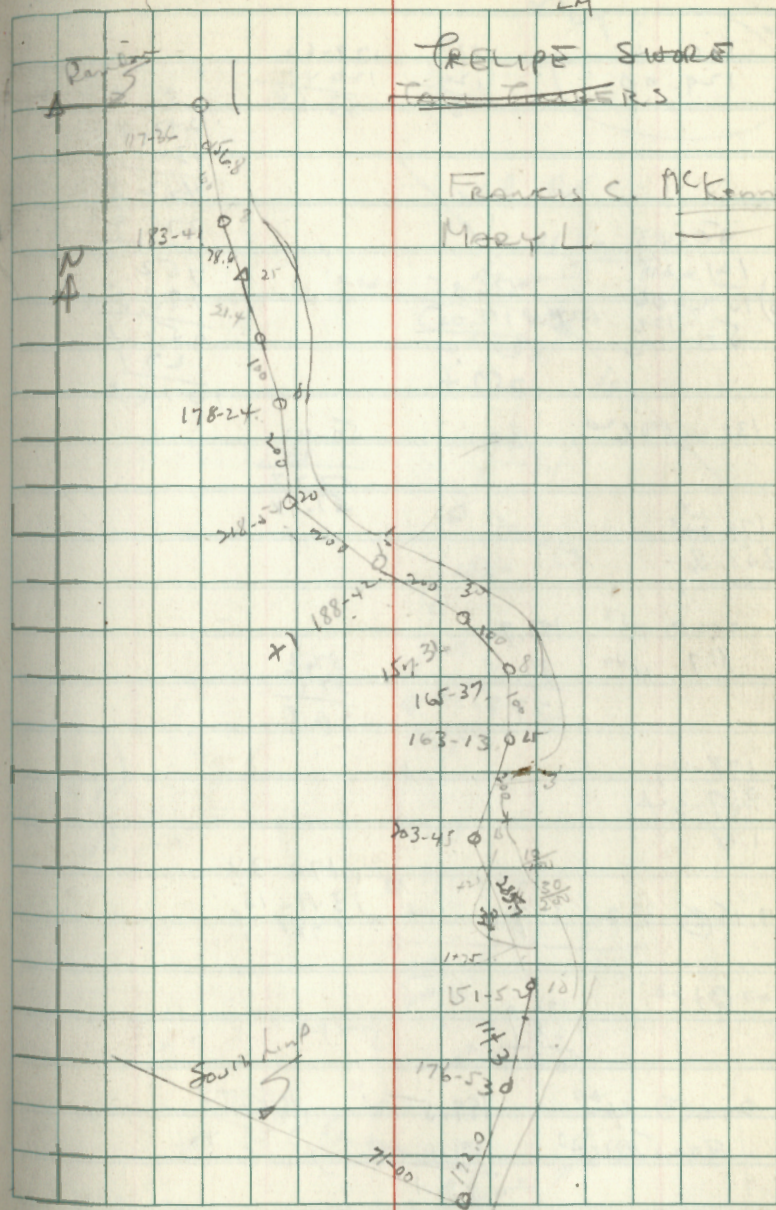
Shore Traverse

20 Dec 59  
J.S.  
km

83

FRUITS SWATH  
~~FRUITS SWATH~~

Francis C. McKenna  
Mary L.





1-140-27 Wickline

|        |     |        |  |
|--------|-----|--------|--|
| 126-40 | 180 | 179-60 |  |
| 129-00 | 129 | 126-40 |  |
|        | 51  | 53-20  |  |

|          |        |        |  |
|----------|--------|--------|--|
| 50-43    |        |        |  |
| 101-25   |        |        |  |
| 3) 15-06 | 136.35 | 121.05 |  |
| 50-42    | 111.05 |        |  |
|          | 247.40 |        |  |
|          | 257.4  |        |  |

|              |      |       |  |
|--------------|------|-------|--|
| 131.45 @ 620 | 30.5 | 50-42 |  |
|              |      | 25    |  |
|              |      | 5277  |  |
|              |      | 57.17 |  |

|         |  |  |  |
|---------|--|--|--|
| 179-28  |  |  |  |
| 358.26- |  |  |  |
| 179-28  |  |  |  |

|            |       |      |  |
|------------|-------|------|--|
| 200 @ 150  | 199.9 |      |  |
| 81.7 @ 110 | 80.0  |      |  |
|            | 279.9 |      |  |
|            |       | 37.3 |  |
|            |       | 27.5 |  |
|            |       | 76.8 |  |

|        |  |  |  |
|--------|--|--|--|
| 178-47 |  |  |  |
| 357-34 |  |  |  |
| 178    |  |  |  |

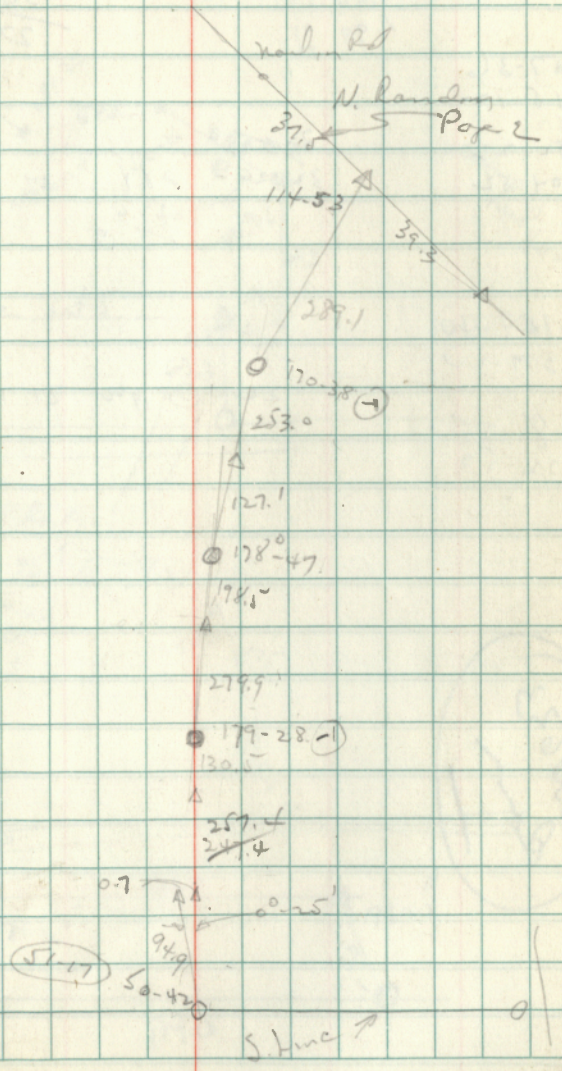
|              |       |        |  |
|--------------|-------|--------|--|
| 127.45 @ 330 | 127.4 | 170-38 |  |
|              |       | 341-15 |  |
|              |       | 170-38 |  |

|           |       |  |  |
|-----------|-------|--|--|
| 500 @ 120 | 199.9 |  |  |
|           | 53.1  |  |  |
|           | 252.0 |  |  |

|             |       |        |  |
|-------------|-------|--------|--|
| 200 @ 400   | 199.5 | 114-53 |  |
| 90.25 @ 640 | 89.6  | 229.46 |  |
|             | 289.1 |        |  |

Backline

21 April 57 JS LM









34-138-26

Rav. Dolina

2649.7

NW cor  
SW cor

261.05  
222.30  
38.75  
17.0

Cent. Hwy  
30 Wood St.

NW cor. 34  
21WP SW 81.9  
NW cor REAfe 118.0

200 12.30  
195.4  
7.3  
202.7

N<sup>1</sup>/<sub>4</sub> cor 2" IPipe

18" NP South 145 0.83  
16 NP Nail 18.5

(Note - Stone with  
"X" Removed & 2"  
Iron Pipe set)

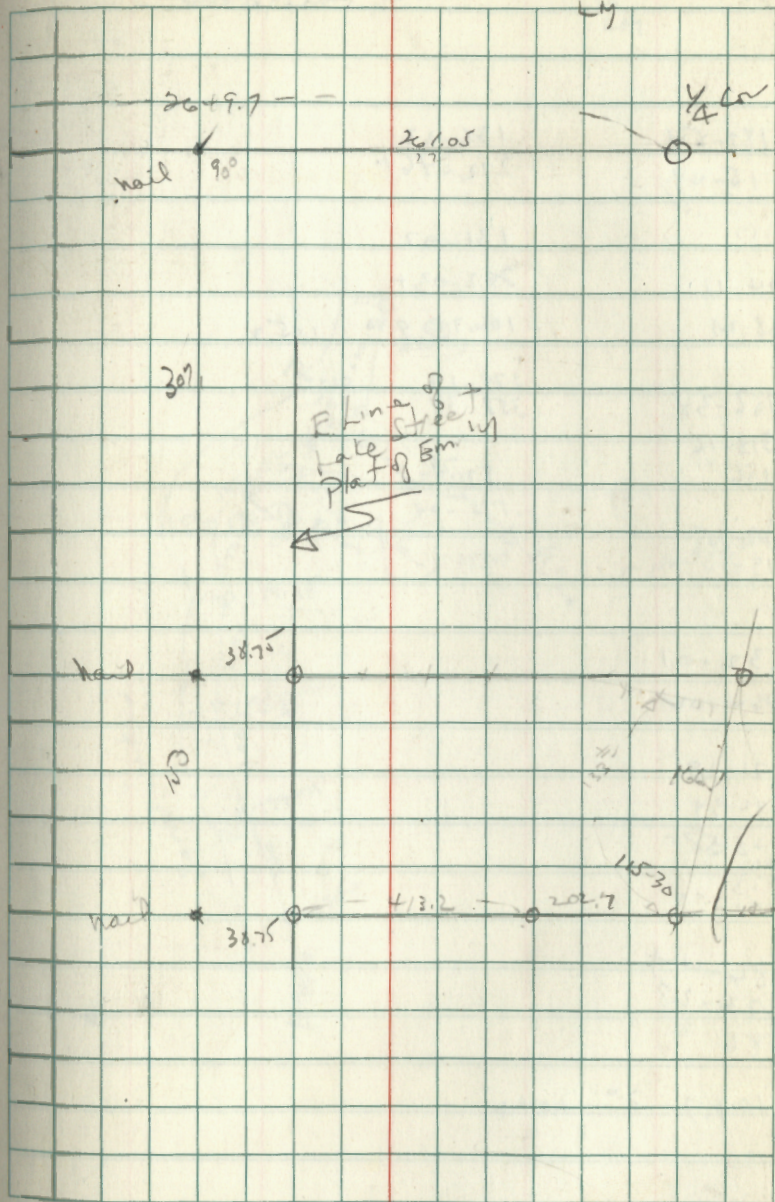
231.00  
115.30  
179.6  
115.30  
64.30

202.7  
41.3  
161.4

22 Apr 59

56

JS  
LY





4-141-26

Ed Loughlin

187-54

15-48

375  
104  
185

174-11

348-21

182-38

313-16  
186

119-35

19-10  
377  
189

132-01

264-02

171-19

342-39

3-123-58

36  
373  
171-19

86-44

173-28  
86

104.7 3° 104.6

136-23

272-76+

131-02

262-03+

106.7 @ 948 105.3

179-19

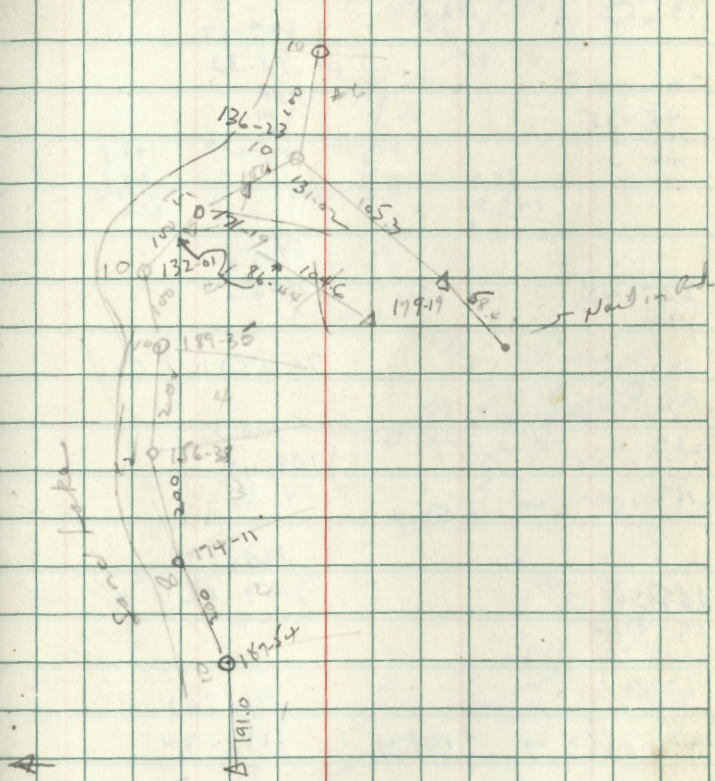
358-38

87-32

175-04

24 Apr 57

57

JS  
LM



4-141-26

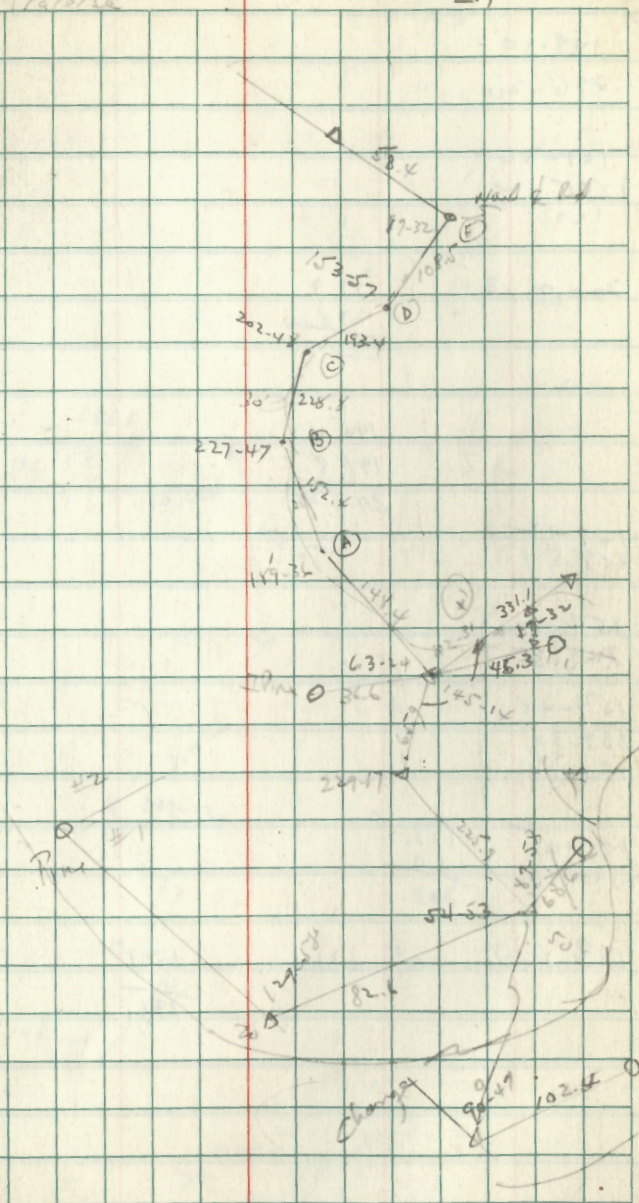
F. Laughlin

|           |                 |       |          |                       |
|-----------|-----------------|-------|----------|-----------------------|
|           |                 |       | 112-31   |                       |
|           |                 |       | 225-02   |                       |
| 153-57    |                 |       |          |                       |
| ) 307-54  |                 |       | 145-14   | 17-32-                |
| 153-110   |                 |       | 290-28   | 35-03                 |
| 193.6 ⊙   | 2 <sup>50</sup> | 193.4 | 229-17   |                       |
|           |                 |       | 98-33    |                       |
| 202-48    |                 |       | 251      |                       |
| 45-35     |                 |       | 229      |                       |
| ) 405     |                 |       | 201-220  | 199.8                 |
| 102 21/2  |                 |       |          | 26.1                  |
|           | 87.9            |       |          | 224.9                 |
|           | 140.6           |       |          |                       |
|           | 228.5           |       |          |                       |
|           |                 |       | 89-58    |                       |
| 227-48    |                 |       | ) 175-56 |                       |
| ) 95-34   |                 |       | 87       |                       |
| 323-21    |                 |       | 70.15 ⊙  | 12 <sup>10</sup> 68.4 |
| 36        |                 |       |          |                       |
| 3) 283-24 |                 |       | 54-53    |                       |
| 227 47    |                 |       | ) 109-45 |                       |
|           |                 |       | 54 100   |                       |
| 152.5 ⊙   | 220             | 152.4 | 52       |                       |
|           |                 |       | 129-58   |                       |
| 189-36 -  |                 |       | ) 259 53 |                       |
| 19 12-    |                 |       | 129      |                       |
| 329 72    |                 |       |          |                       |
| 189       |                 |       | 90-47    |                       |
| 148.7 ⊙   | 320             | 148.4 | ) 181-34 |                       |
|           |                 |       | 90 94    |                       |
|           |                 |       | 45       |                       |
| 63-24     |                 |       | 103.5 ⊙  | 8 <sup>20</sup> 102.4 |
| 126-48    |                 |       |          |                       |
| 36.8 ⊙    | 500             | 36.6  |          |                       |

Road Parson

24 Apr  
J.S.  
LM

58





4-141-26 Langdon

148-10 -

296-20

127-36+

258 12  
127

200 @ 130

192.9  
27.8  
220.7

195.4  
198.8  
394.2

149-12  
298-24

154-47  
309-35

154-48

309-35  
95  
154 495

101-05  
200 10

193.5  
10  
203.5

133.1 @

10°

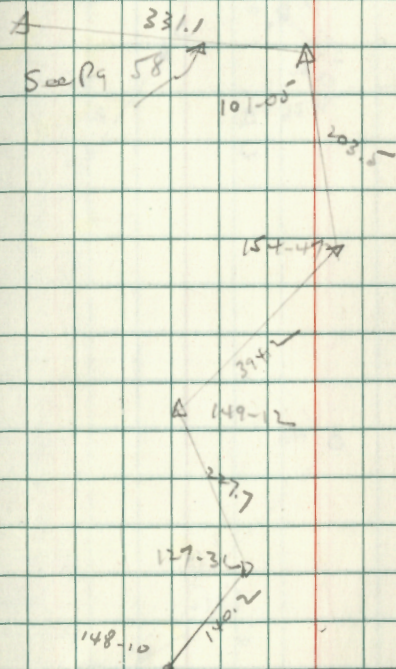
131.1

131.1  
2  
331.1

25 Apr 57

57

45  
44  
40



So Remains  
See Book 3  
EE



