



A000707200

OFFICE OF THE COUNTY RECORDER
CASS COUNTY, MINNESOTA
CERTIFIED, FILED, AND/OR
RECORDED ON

11/6/2024 9:43:20 AM

AS DOC #: A000707200

PAGES: 2

REC FEES: 0.00

BY BA _____ Dep TX#: 200231

I hereby certify that this survey, plan, or report was prepared by me or under my direct supervision and that I am a duly Licensed Land Surveyor under the laws of the state of Minnesota.

Daniel J. McAninch 5 November 2024

Daniel J. McAninch Date
MN LIC.# 25684

CORRECTIVE CERTIFICATE OF LOCATION OF GOVERNMENT CORNER

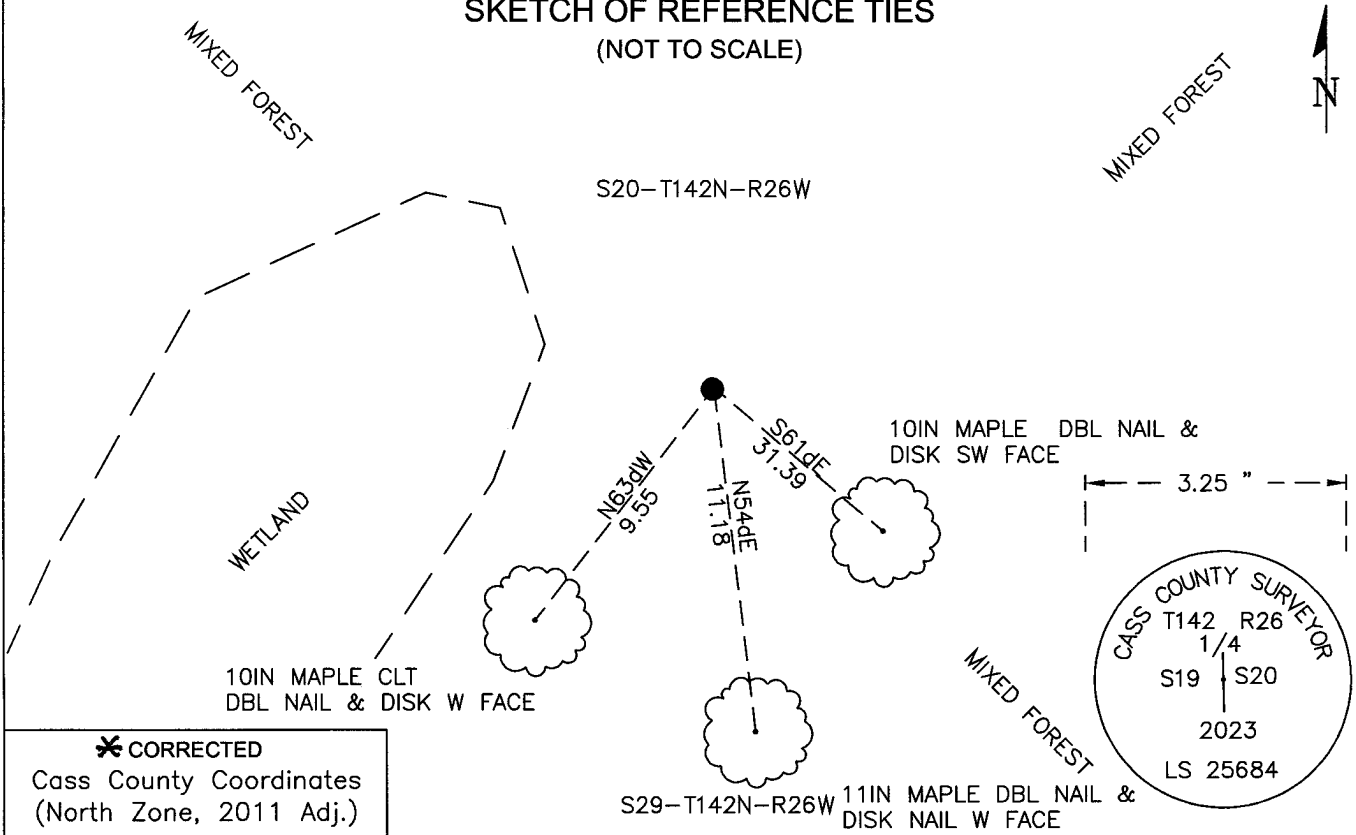
 EAST 1/4 Corner of Section 19 , Township 142 N , Range R26 W P.M. 5th
County of Cass, State of Minnesota

At the corner location shown on the sketch:

- On _____ found _____
- left monument as found lowered monument removed monument (explain)
- On 11/1/2023 set 30"x3/4" diameter aluminum pipe with a 3.25" diameter stamped aluminum cap

SKETCH OF REFERENCE TIES

(NOT TO SCALE)



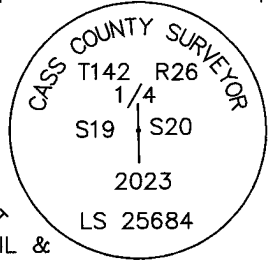
*** CORRECTED**

Cass County Coordinates
(North Zone, 2011 Adj.)

N: 208189.024

E: 551964.702

S29-T142N-R26W 11IN MAPLE DBL NAIL &
DISK NAIL W FACE



Cap Stamping Detail



STATEMENT OF EVIDENCE:

EAST QUARTER CORNER OF SECTION 19,
TOWNSHIP 142 NORTH, RANGE 26 WEST,
CASS COUNTY, MINNESOTA

- 1870** The township exterior of original public land survey was completed under E.W. Griffin. A wood post was set at this corner and ties were taken as follows.
- | | | |
|-----------|-------|---------------------|
| 8" Spruce | S80dE | 11 links (7.3 feet) |
| 4" Spruce | N42dW | 3 links (2.0 feet) |
- 1916** A RIGHT OF WAY AND TRACK MAP for Minneapolis, St. Paul and Sault Ste. Marie Railway Company shows an angle and distances to both the Southeast and East Quarter corners of Section 19. The map also shows distances between culverts under the grade.
- 2023** A Cass County survey crew conducted a thorough search for physical evidence without success. Utilizing the existing southwest section corner, railroad grade, culverts and the 1916 railroad map the corner was set at an obliterated position.
(Cass County Proj. 2023-004)

CASS COUNTY COORDINATES (NAD 83 2011 ADJUSTMENT, NORTH ZONE)

***CORRECTED FROM DOC. A000707200**

N-208189.024
E-551964.702

General Land Office Information on file in the MN historical Society, St. Paul MN. Copies on file in the Cass County Highway Department/Surveyors Office (CCHD/SO).

For additional information contact:
Cass County Highway Department
County Surveyor's Office
8045 County Road 12
Walker, MN 56484
218-547-1211