



A000706835

OFFICE OF THE COUNTY RECORDER
CASS COUNTY, MINNESOTA
CERTIFIED, FILED, AND/OR
RECORDED ON

10/23/2024 8:46:48 AM

AS DOC #: A000706835

PAGES: 2

REC FEES: 0.00

BY BA _____ Dep TX#: 199916

I hereby certify that this survey, plan, or report was prepared by me or under my direct supervision and that I am a duly Licensed Land Surveyor under the laws of the state of Minnesota.

Daniel J. McAninch 22 October 2024
Daniel J. McAninch Date
MN LIC.# 25684

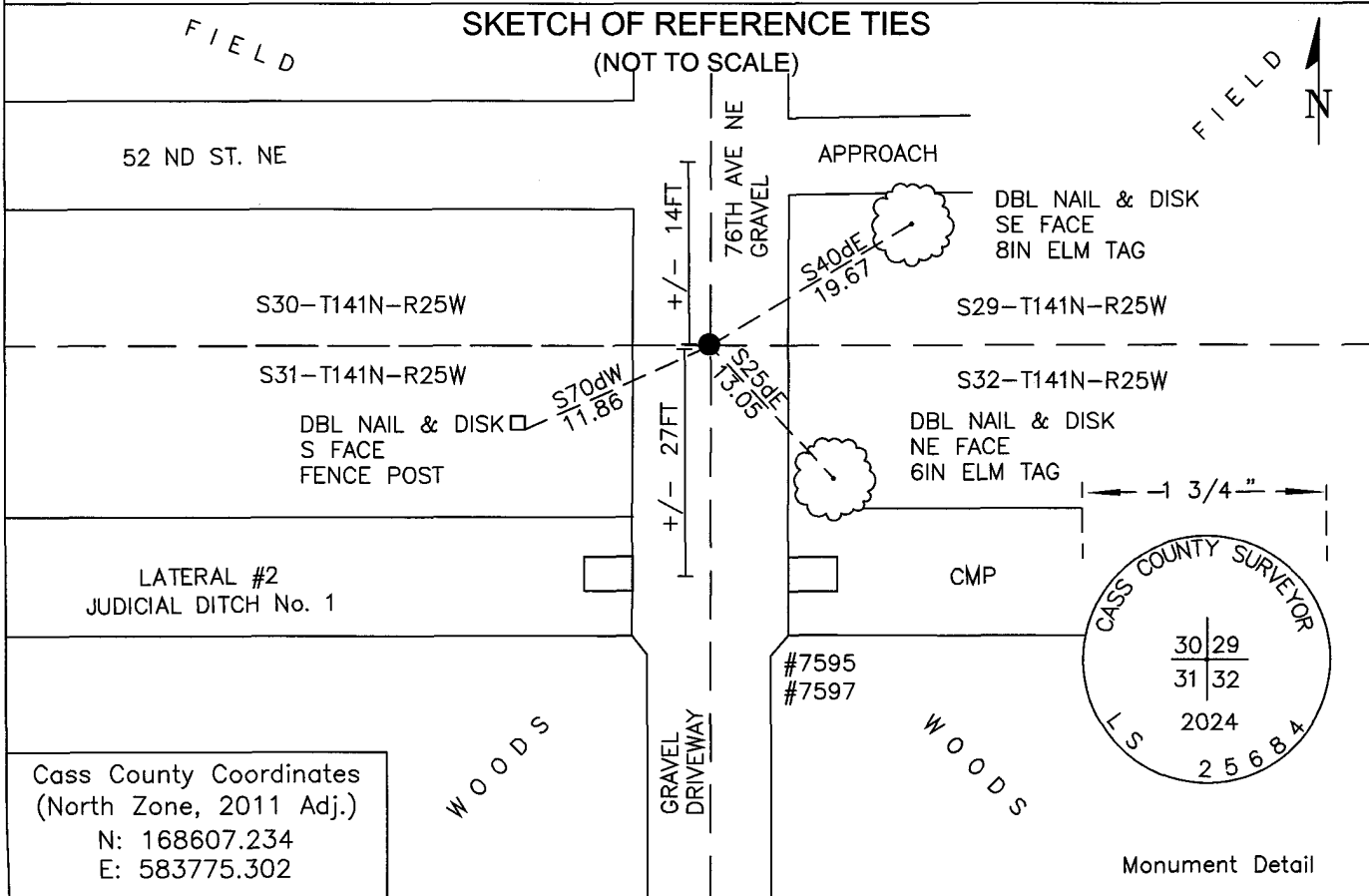
CERTIFICATE OF LOCATION OF GOVERNMENT CORNER

Northeast 1/4 Corner of Section 31, Township 141 N, Range R25 W, P.M. 5th
County of Cass, State of Minnesota

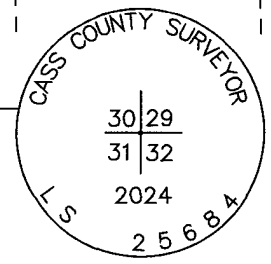
At the corner location shown on the sketch:

- On _____ found _____
- left monument as found lowered monument removed monument (explain)
- On JULY 10, 2024 set 1/2" diameter iron pipe with 1 3/4" Aluminum cap

SKETCH OF REFERENCE TIES (NOT TO SCALE)



Cass County Coordinates
(North Zone, 2011 Adj.)
N: 168607.234
E: 583775.302



Monument Detail



Page 1 of 2

A000706835

STATEMENT OF EVIDENCE:

NORTHEAST CORNER OF SECTION 31
TOWNSHIP 141 NORTH, RANGE 25 WEST,
(former LIMA TWP.), CASS COUNTY MINNESOTA

- 1870** During the original survey of Township 141 North, Range 25 West, a wood post was set, by a GLO crew under William P. Allen and Edgar P. Putnam, to mark the corner. The bearing ties were set. Copies on file in the Cass County Highway Department/Surveyors office. (CCHD/SO).
- | | | |
|-----------------|----------|----------|
| 12" White Pine | S12dE | 10 links |
| 11" White Pine | N74d30'E | 35 links |
| 12" White Cedar | N53dW | 16 links |
| 8" White Cedar | S79dW | 10 links |
- 1912** A MAP OF JUDICIAL DITCH No. 1, CASS AND AITKIN COUNTIES shows Lateral No. 2 constructed along the north line of Section 31 and 32.
- 1920** Ben F. Clark set a post and stone mound in the "center of ditch dump" at this corner. (Curo Book 162, Page 24)
- 2023** A Cass County Survey crew set a monument at the centerline extended of a north running gravel road near the northerly top of ditch slope of Lateral No. 2 which runs westerly towards Rice Lake. The corner fell in a gravel driveway that runs south over the ditch lateral which flows under the driveway through culverts. This position is consistent with the 1912 Judicial Ditch No.1 map and occupation lines to the West.

CASS COUNTY COORDINATES (NAD 83 2011 ADJUSTMENT)**N-168607.234****E-583775.302**

General Land Office Information on file in the MN historical Society, St. Paul MN. Copies on file in the Cass County Highway Department/Surveyors Office (CCHD/SO).

For additional information contact:
Cass County Highway Department
County Surveyor's Office
8045 County Road 12
Walker, MN 56484
218-547-1211