



A000706834

OFFICE OF THE COUNTY RECORDER  
CASS COUNTY, MINNESOTA  
CERTIFIED, FILED, AND/OR  
RECORDED ON

10/23/2024 8:46:47 AM

AS DOC #: A000706834

PAGES: 2

REC FEES: 0.00

BY BA \_\_\_\_\_ Dep TX#: 199916

I hereby certify that this survey, plan, or report was prepared by me or under my direct supervision and that I am a duly Licensed Land Surveyor under the laws of the state of Minnesota.

Daniel J. McAninch 22 October 2024  
Daniel J. McAninch Date  
MN LIC.# 25684

### CERTIFICATE OF LOCATION OF GOVERNMENT CORNER

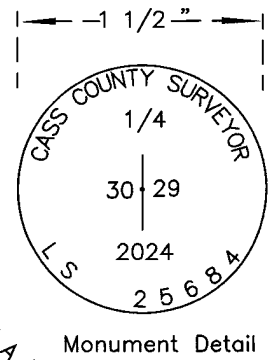
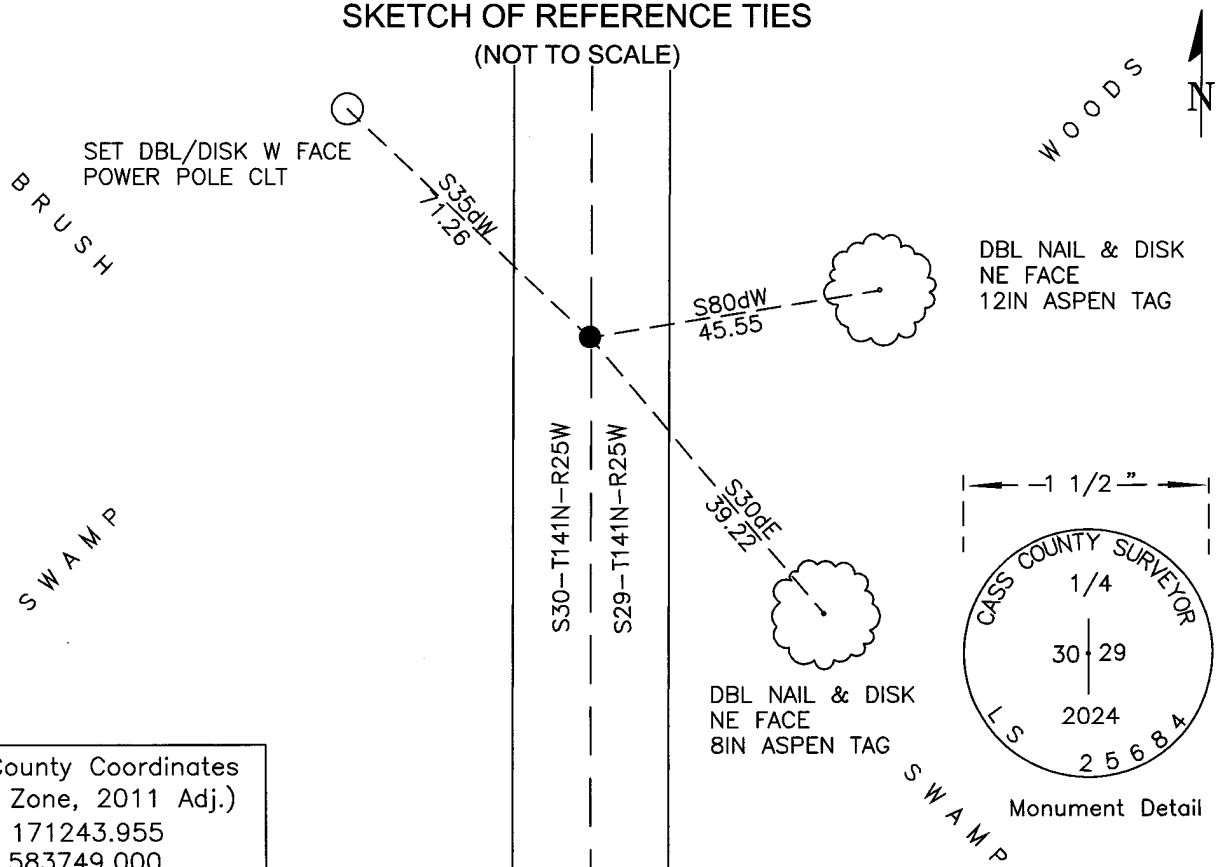
EAST QUARTER Corner of Section 30, Township 141 N, Range R25 W, P.M. 5th  
County of Cass, State of Minnesota

At the corner location shown on the sketch:

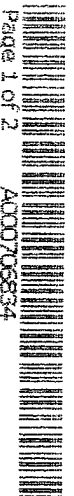
- On \_\_\_\_\_ found \_\_\_\_\_
- left monument as found     lowered monument     removed monument (explain)
- On July 10, 2024 set 1/2" diameter iron pipe with 1 1/2" Aluminum cap

### SKETCH OF REFERENCE TIES

(NOT TO SCALE)



Cass County Coordinates  
(North Zone, 2011 Adj.)  
N: 171243.955  
E: 583749.000



**STATEMENT OF EVIDENCE:**

EAST QUARTER CORNER OF SECTION 30  
TOWNSHIP 141 NORTH, RANGE 25 WEST,  
(former LIMA TWP.), CASS COUNTY MINNESOTA

- 1870** During the original survey of Township 141 North, Range 25 West, a wood post was set, by a GLO crew under William P. Allen and Edgar P. Putnam, to mark the corner. The bearing ties were set. Copies on file in the Cass County Highway Department/Surveyors office. (CCHD/SO).
- |                 |       |                 |
|-----------------|-------|-----------------|
| 12" Red Cedar   | WEST  | 4 links (2.6')  |
| 10" White Cedar | S80dE | 14 links (9.2') |
- 1920** Ben F. Clark found a wood post at this corner while measuring in southward direction. The post measured 2635 feet South of the northeast corner (2636.85 Current Measure) of Section 30. (Curo Book 162, Page 21)
- 2023** A Cass County Survey crew set a monument at a pro-rated North - South position determined between the East quarter corner of Section 19 and the Northeast corner of Section 30, both of which were determined by ditch and road improvements. The corner was set at the centerline of the gravel road running North and South. This was deemed to be the most supportable and equitable location and fit reasonably well with other distant occupation and computed lines and 1920 measurements.

**CASS COUNTY COORDINATES (NAD 83 2011 ADJUSTMENT)**

N-171243.955

E-583749.000

General Land Office Information on file in the MN historical Society, St. Paul MN. Copies on file in the Cass County Highway Department/Surveyors Office (CCHD/SO).

For additional information contact:  
**Cass County Highway Department**  
**County Surveyor's Office**  
8045 County Road 12  
Walker, MN 56484  
218-547-1211