



A000706772

OFFICE OF THE COUNTY RECORDER  
CASS COUNTY, MINNESOTA  
CERTIFIED, FILED, AND/OR  
RECORDED ON

10/21/2024 10:09:25 AM

AS DOC #: A000706772

PAGES: 2

REC FEES: 0.00

BY SW \_\_\_\_\_ Dep TX#: 199863

I hereby certify that this survey, plan, or report was prepared by me or under my direct supervision and that I am a duly Licensed Land Surveyor under the laws of the state of Minnesota.

*Daniel J. McAninch 17 October 2024*

Daniel J. McAninch Date  
MN LIC.# 25684

Page 1 of 2 A000706772

### CERTIFICATE OF LOCATION OF GOVERNMENT CORNER

North 1/4 Corner of Section 5, Township 134 N, Range 29, W P.M. 5th  
County of Cass, State of Minnesota

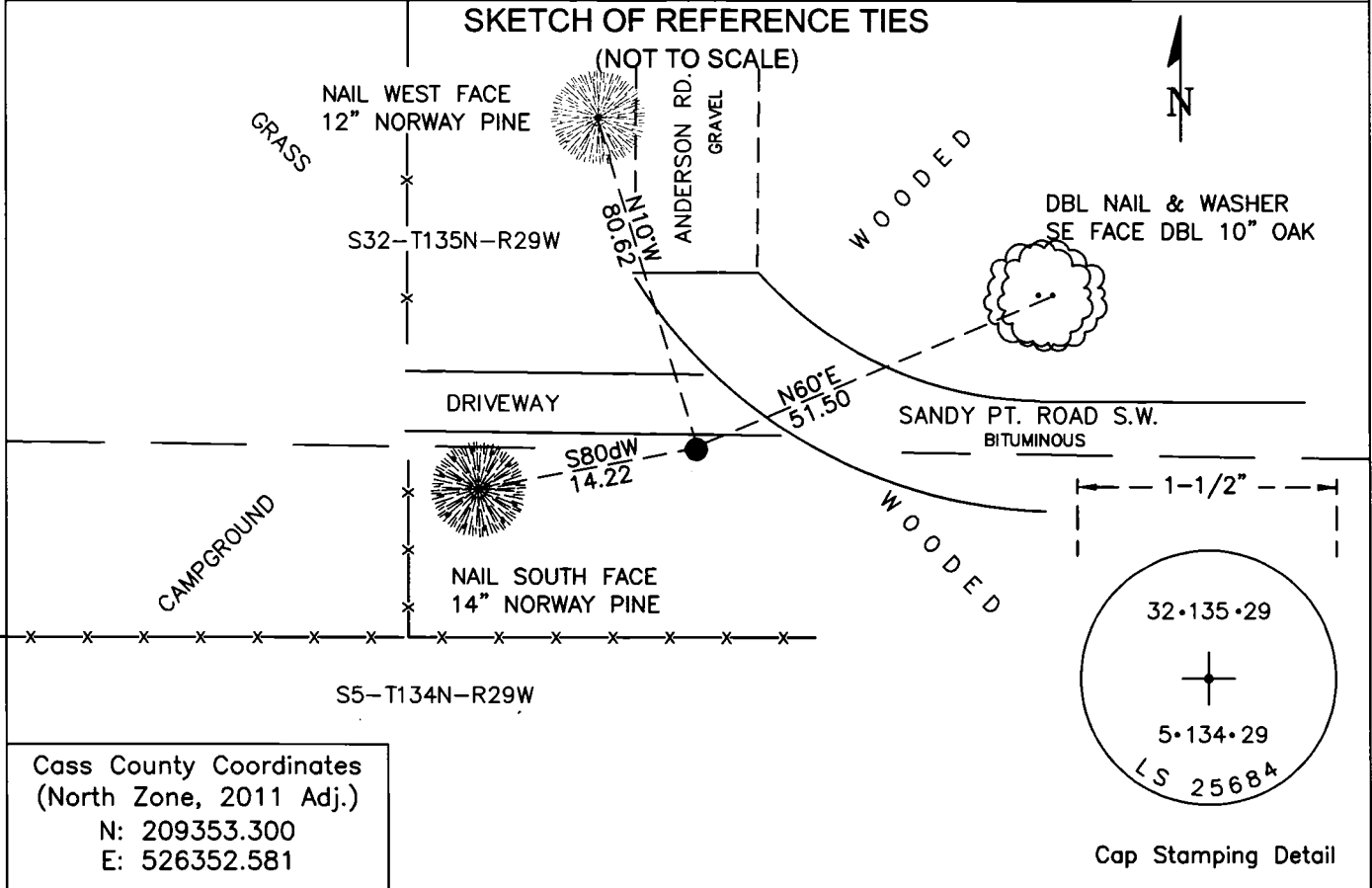
At the corner location shown on the sketch:

On Sept. 1, 2023 found a 1/2" diameter solid iron pin down 1.4 feet

left monument as found     lowered monument     removed monument (explain)

On Oct. 14, 2023 set a 1/2" diameter by 18" long iron pipe with a  
a 1-1/2" diameter stamped aluminum cap.

#### SKETCH OF REFERENCE TIES



Cass County Coordinates  
(North Zone, 2011 Adj.)  
N: 209353.300  
E: 526352.581

Cap Stamping Detail

**STATEMENT OF EVIDENCE:**

NORTH QUARTER CORNER SECTION 5,  
TOWNSHIP 134 NORTH, RANGE 29 WEST,  
CASS COUNTY, MINNESOTA

- 1858** The original public land survey was completed under Victor Sawyer and Augustus Stearns and a wood post was set to mark the corner. This survey was subsequently determined to be erroneous and was superseded by a new survey in 1865. (GLO Book 127)
- 1865** The corrected public land survey was completed under George B. Wright and Thomas B. Walker. A wood post was set to mark the corner with the following bearing trees marked. (GLO Bk 126)
- |                 |       |                    |
|-----------------|-------|--------------------|
| 12" Norway Pine | S10dE | 89 links (58.7 ft) |
| 35" White Pine  | N2dW  | 48 links (31.7 ft) |
- 1916** E.B. Horst found the White Pine BT uprooted and the Norway Pine stump with the tree rotted. He set a wood hub at the true corner location and at some point later replaced it with an iron monument. (Curo Book 66 Page 126)
- 1917** E.B. Horst revisits the corner and replaces the hub with a 3"x 3" x 4 foot long Burr Oak post.
- |                |          |           |
|----------------|----------|-----------|
| 5" White Birch | N9d30'W  | 42.7 ft   |
| 7" Popple      | S19d30'E | 60.3 feet |
- 1920** E.B. Horst surveys westerly from an iron monument at this corner and triangulates Across agate Lake. (Curo Book 172A Page 60; Book 244 Page 131; Svy Book C, Page 380, Rec 444)
- 1928** J.P. Larsen surveys and plats TINGDALE BROS. GULL LAKE GARDENS with this corner being the monumented southwest plat corner.
- 1935** County Surveyor, John Curo, found the 2"x48" pipe set previously has been grubbed out as witnessed by Oscar Thompson. He sets a temporary stake in its place. (Curo Book 223, P 132)
- 1957** Dean Anderson surveys and plats THE FIST ADDITION TO MANTAUKE WITH THE WEST LINE OF SAID PLAT BEING THE North-South quarte line of Section 5 with the North line of the plat being dimensioned 1673.7 feet southerly of this corner.
- 1958** Dean Anderson surveys and plats BIRCH BAY ON AGATE with the north line of the plat being monumented and dimensioned to this corner.
- 1993** Donn Rasmussen, L.S. 16102 of Widseth, Smith, Nolting shows a monument at this corner on a Certificate of Survey of land in Section 5 and Sec 32, T 135, R 29.
- 2023** A Cass County survey crew finds a 1/2" diameter solid pin at this corner down 1.4 feet below the ground surface. Dimensions measured to other section monuments confirm this pin is a perpetuation of the corner. A new monument is set over the old pin. (See Page 1 for ties.)

Information on file in the MN historical Society, St. Paul MN. Copies on file in the Cass County Highway Department/Surveyors Office (CCHD/SO).

For additional information contact:  
**Cass County Surveyor's Office**  
8045 County Road 12  
Walker, MN 56484