



A000706771

OFFICE OF THE COUNTY RECORDER  
CASS COUNTY, MINNESOTA  
CERTIFIED, FILED, AND/OR  
RECORDED ON

10/21/2024 10:09:24 AM

AS DOC #: A000706771

PAGES: 2

REC FEES: 0.00

BY SW Dep TX#: 199863

I hereby certify that this survey, plan, or report was prepared by me or under my direct supervision and that I am a duly Licensed Land Surveyor under the laws of the state of Minnesota.

*Daniel J. McAninch* 17 October 2024

Daniel J. McAninch Date  
MN LIC.# 25684

Page 1 of 2 A000706771

### CERTIFICATE OF LOCATION OF GOVERNMENT CORNER

MEANDER Corner of Section 5, Township 134 N, Range 29, W P.M. 5th  
County of Cass, State of Minnesota

At the corner location shown on the sketch:

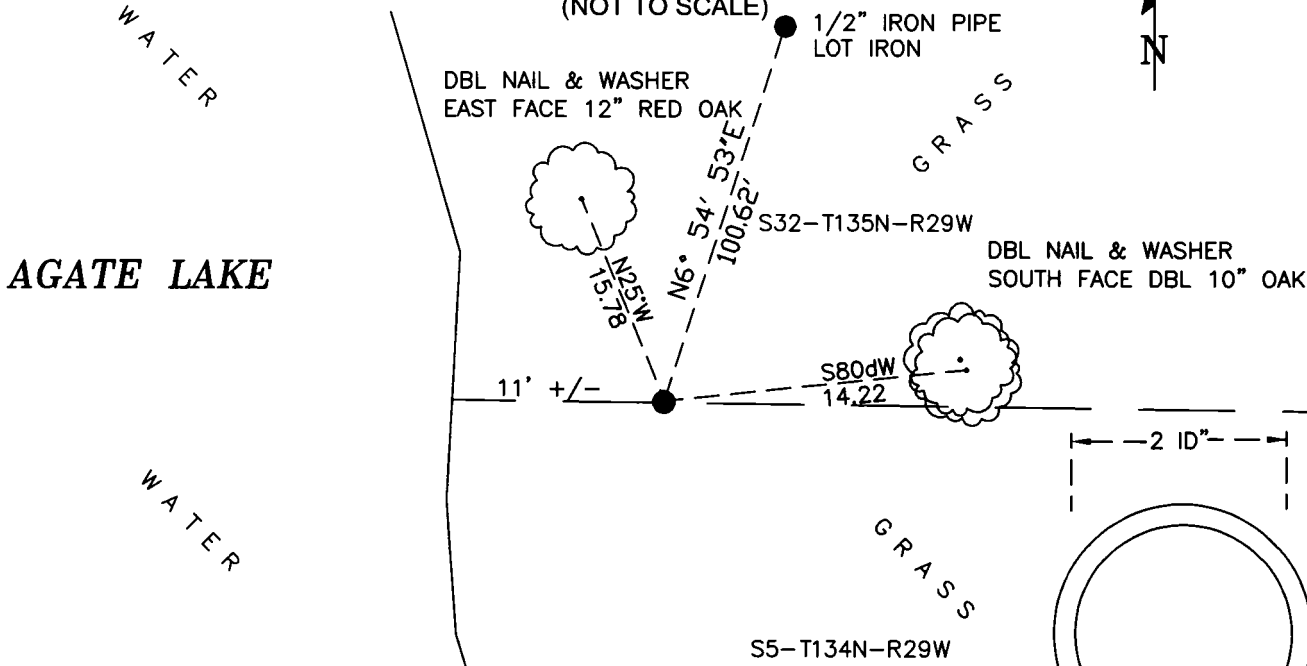
On Oct. 1, 2024 found a 2" inside diameter iron pipe up 2.4 feet

left monument as found  lowered monument  removed monument (explain)

On \_\_\_\_\_ set \_\_\_\_\_

#### SKETCH OF REFERENCE TIES

(NOT TO SCALE)



Cass County Coordinates  
(North Zone, 2011 Adj.)  
N: 209348.4880  
E: 525559.8110

Cap Stamping Detail

**STATEMENT OF EVIDENCE:**

MEANDER CORNER # 3 SECTION 5,  
TOWNSHIP 134 NORTH, RANGE 29 WEST,  
CASS COUNTY, MINNESOTA

- 1858** The original public land survey was completed under Victor Sawyer and Augustus Stearns and a wood post was set to mark M.C. #03. This survey was subsequently determined to be erroneous and was superseded by a new survey in 1865. (GLO Book 127)
- 1865** The corrected public land survey was completed under George B. Wright and Thomas B. Walker. A wood post was set to mark the corner. (GLO Bk 126)
- 1920** E.B. Horst found a wood post and sets hub at this location. At some point later, the hub was replaced with 2" iron monument (Book 244 Page 105, 102)
- 1935** County Surveyor, John Curo, indicates a 2"x 48" pipe was found and states its meander corner #3. (Curo Book 223, P 132)
- 1958** Dean Anderson surveys and plats BIRCH BAY ON AGATE with the north line of the plat being monumented and dimensioned to the meander corner.
- 1993** Donn Rasmussen, L.S. 16102 of Widseth, Smith, Nolting shows a monument at the meander corner on a Certificate of Survey of land in Section 5 and Sec 32, T 135, R 29.
- 2023** A Cass County survey crew finds a 2" inside diameter solid pin at this corner up 2.4 feet below the ground surface. Based on distances measured to other found monuments, the found pipe is accepted as the perpetuation of the original corner. Original monument left as is. (See Page 1 for ties.)

Information on file in the MN historical Society, St. Paul MN. Copies on file in the Cass County Highway Department/Surveyors Office (CCHD/SO).

For additional information contact:  
**Cass County Surveyor's Office**  
8045 County Road 12  
Walker, MN 56484  
218-547-1211