

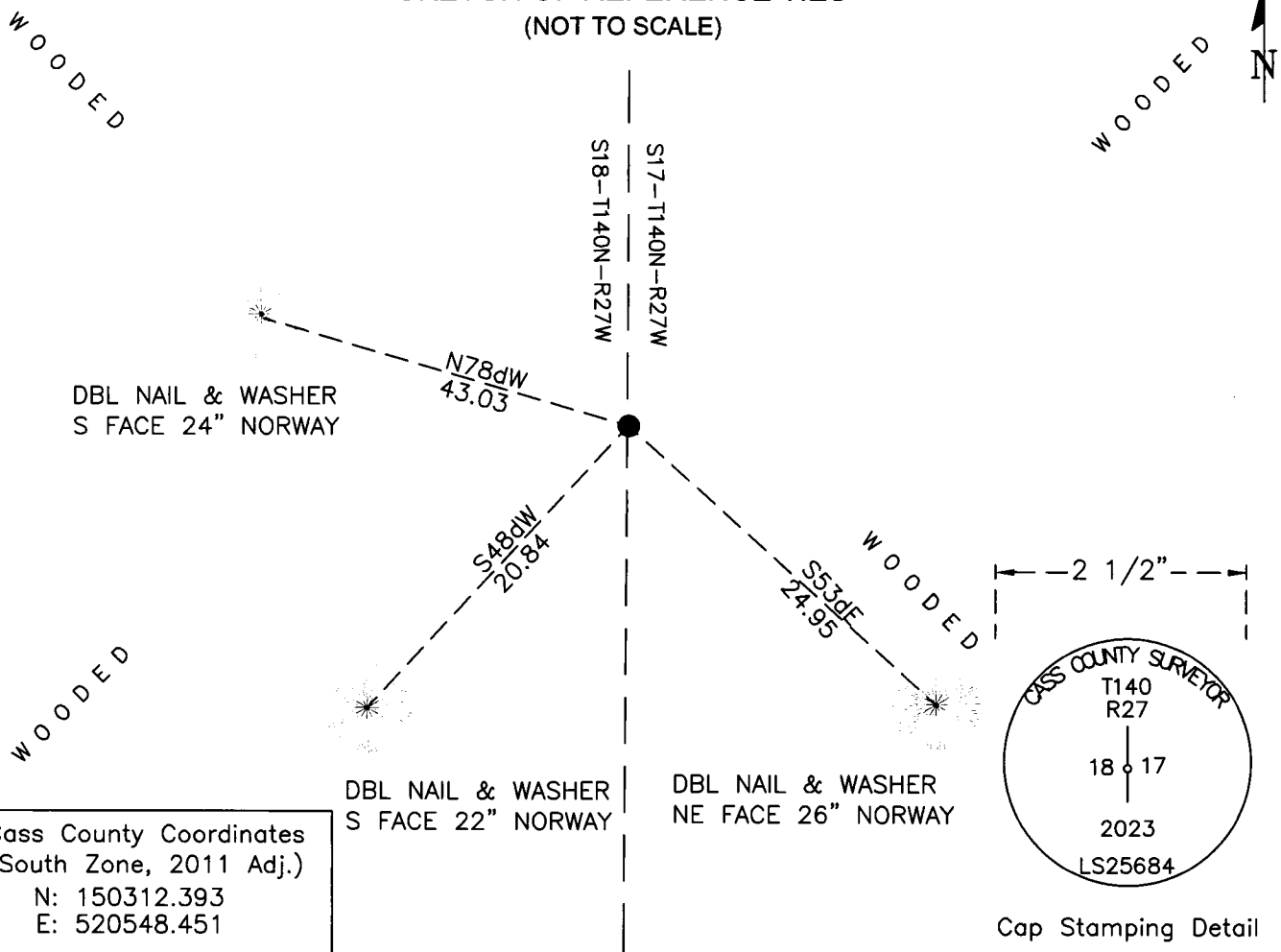
# CERTIFICATE OF LOCATION OF GOVERNMENT CORNER

EAST 1/4 Corner of Section 18, Township 140 N, Range 27 W, 5th P.M.  
 County of Cass, State of Minnesota

At the corner location shown on the sketch:

- On \_\_\_\_\_ found \_\_\_\_\_
- left monument as found     lowered monument     removed monument (explain)
- On 5/16/23 set 1" diameter by 32 inch long aluminum pipe with a 3-1/4 inch diameter stamped aluminum cap.

## SKETCH OF REFERENCE TIES (NOT TO SCALE)

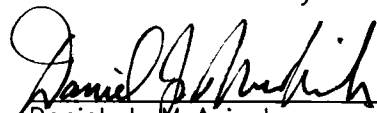


Cass County Coordinates  
 (South Zone, 2011 Adj.)  
 N: 150312.393  
 E: 520548.451

Cap Stamping Detail

Statement of evidence relative to this corner location is on the back of this page

I hereby certify that this survey, plan, or report was prepared by me or under my direct supervision and that I am a duly Licensed Land Surveyor under the laws of the state of Minnesota.

  
 Daniel J. McAninch  
 Cass County Surveyor  
 MN License No. 25684

23 July 2024  
 Date



**STATEMENT OF EVIDENCE:**

EAST QUARTER CORNER OF SECTION 18  
TOWNSHIP 140 NORTH, RANGE 27 WEST,  
(TRELIPE TWP.), CASS COUNTY MINNESOTA

**1870** During the original survey of the 11<sup>th</sup> Standard Parallel a wood post was set, by a GLO crew under George Stuntz, to mark the corner. The bearing ties were set. Copies on file in the Cass County Highway Department/Surveyors office. (CCHD/SO).

8" Jack Pine	S84d30'W	35 links (23.1')
10" Norway Pine	N21dE	15 links (9.9')

**2023** A Cass County Survey crew set a monument at a position determined by single proportion between a computed Southeast Corner of Section 18 and a found iron pipe marking the Northeast Corner of Section 18. This position agreed well with a local fence, trail and a river crossing 5.17 chains to the south as noted in the original GLO notes. (CCSO Project 2023-011)

**CASS COUNTY COORDINATES (NAD 83 2011 ADJUSTMENT)**

N-150312.393

E-520548.451

General Land Office Information on file in the MN historical Society, St. Paul MN. Copies on file in the Cass County Highway Department/Surveyors Office (CCHD/SO).

For additional information contact:  
**Cass County Highway Department**  
**County Surveyor's Office**  
8045 County Road 12  
Walker, MN 56484  
218-547-1211

**A000704498**

**OFFICE OF THE COUNTY RECORDER**  
**CASS COUNTY, MINNESOTA**  
**CERTIFIED, FILED, AND/OR**  
**RECORDED ON**

7/24/2024 10:50:36 AM

AS DOC #: A000704498

PAGES: 2

REC FEES: 0.00

BY SW Dep TX#: 197981