

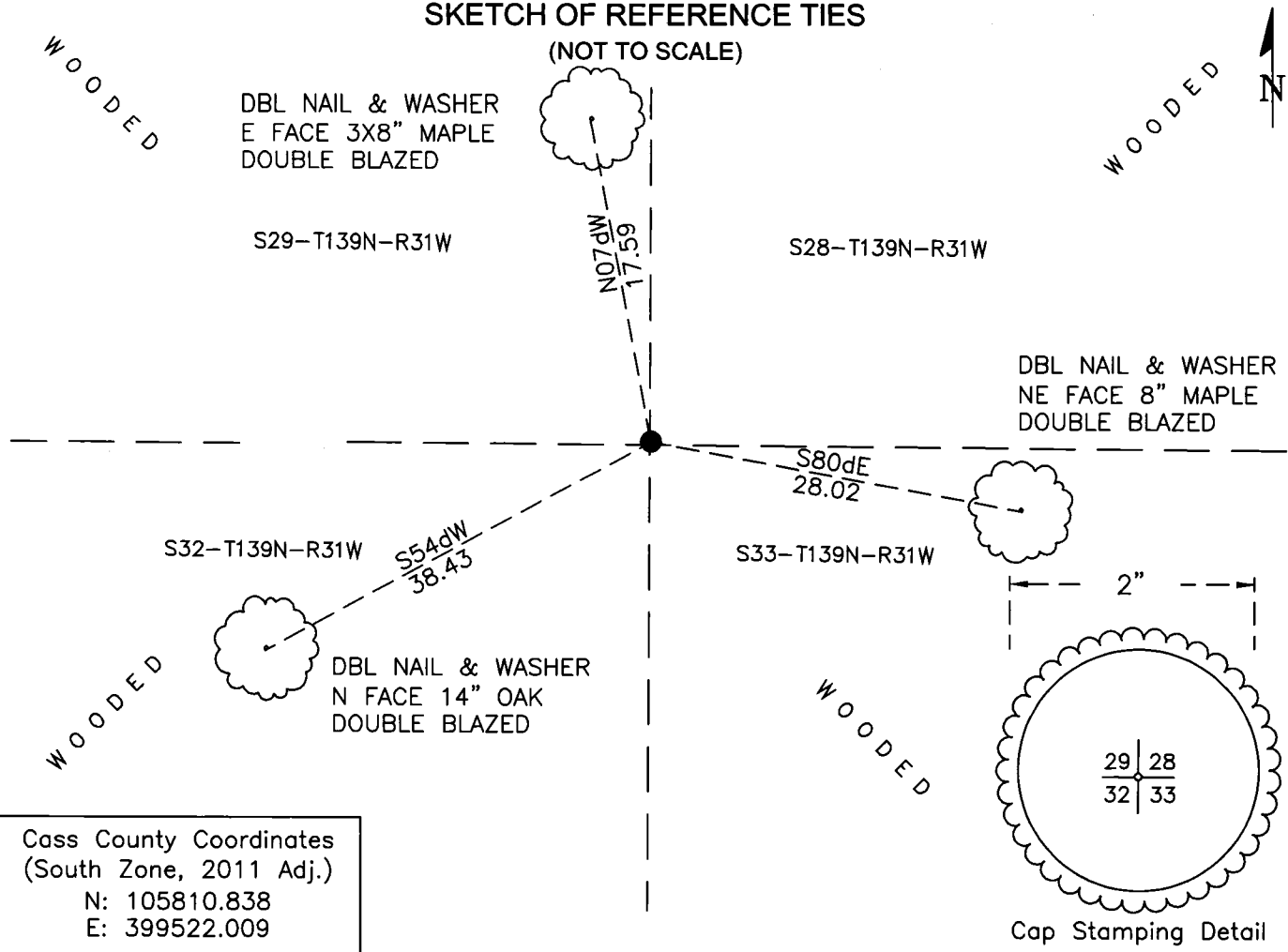
CERTIFICATE OF LOCATION OF GOVERNMENT CORNER

Northeast Corner of Section 32, Township 139 N, Range 31 W, 5th P.M.
 County of Cass, State of Minnesota

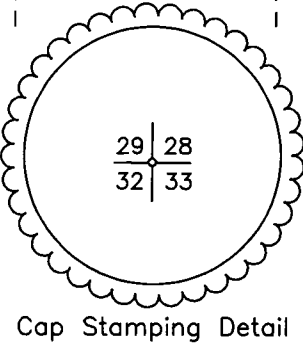
At the corner location shown on the sketch:

- On 5/16/23 found 1-1/4" OD pinched top iron pipe 1-1/2 feet above ground
 as well as two nearby blazed oak trees
- left monument as found lowered monument removed monument (explain)
- On _____ set _____

SKETCH OF REFERENCE TIES (NOT TO SCALE)



Cass County Coordinates
 (South Zone, 2011 Adj.)
 N: 105810.838
 E: 399522.009



Statement of evidence relative to this corner location is on the back of this page

I hereby certify that this survey, plan, or report was prepared by me or under my direct supervision and that I am a duly Licensed Land Surveyor under the laws of the state of Minnesota.

Daniel J. McAninch
 Daniel J. McAninch
 Cass County Surveyor
 MN License No. 25684

23 July 2024
 Date

Page 1 of 2 A000704495



STATEMENT OF EVIDENCE:

NORTHEAST CORNER OF SECTION 32,
TOWNSHIP 139 NORTH, RANGE 31 WEST,
CASS COUNTY, MINNESOTA

1870 The township exterior of original public land survey was completed under Mahlon Black. A wood post was set at this corner and ties were taken as follows.

12" Aspen	S32d30'E	53links (35.0 feet)
20" W Pine	N50d30'W	48 Links (31.7 feet)
20" Norway Pine	WEST	40 links (26.4 feet)
6" Birch	N26d15'E	32 links (21.1 feet)

2023 A Cass County survey crew recovered a 1-1/4 inch-diameter pinched top iron pipe approximately 1.5 feet up from the ground surface. We made note of two potential blazed Oak trees that may have been bearing trees to this resurvey monument. While unable to find a survey record to match this pipe but due to the apparent age of the pipe and its relative position, it was accepted as the best evidence of the corner. After finding this monument we also found iron pipes set on the East and North lines of Section 32 at lost positions using this monument.

See page 1 for ties. (Cass County Proj. 2022-029, Cert of Survey 10099)

CASS COUNTY COORDINATES (NAD 83 2011 ADJUSTMENT, NORTH ZONE)

N-105810.838

E-399522.009

General Land Office Information on file in the MN historical Society, St. Paul MN. Copies on file in the Cass County Highway Department/Surveyors Office (CCHD/SO).

For additional information contact:
Cass County Highway Department
County Surveyor's Office
8045 County Road 12
Walker, MN 56484
218-547-1211



A000704495

OFFICE OF THE COUNTY RECORDER
CASS COUNTY, MINNESOTA
CERTIFIED, FILED, AND/OR
RECORDED ON

7/24/2024 10:50:33 AM

AS DOC #: A000704495
PAGES: 2
REC FEES: 0.00

BY SW _____ Dep TX#: 197981