

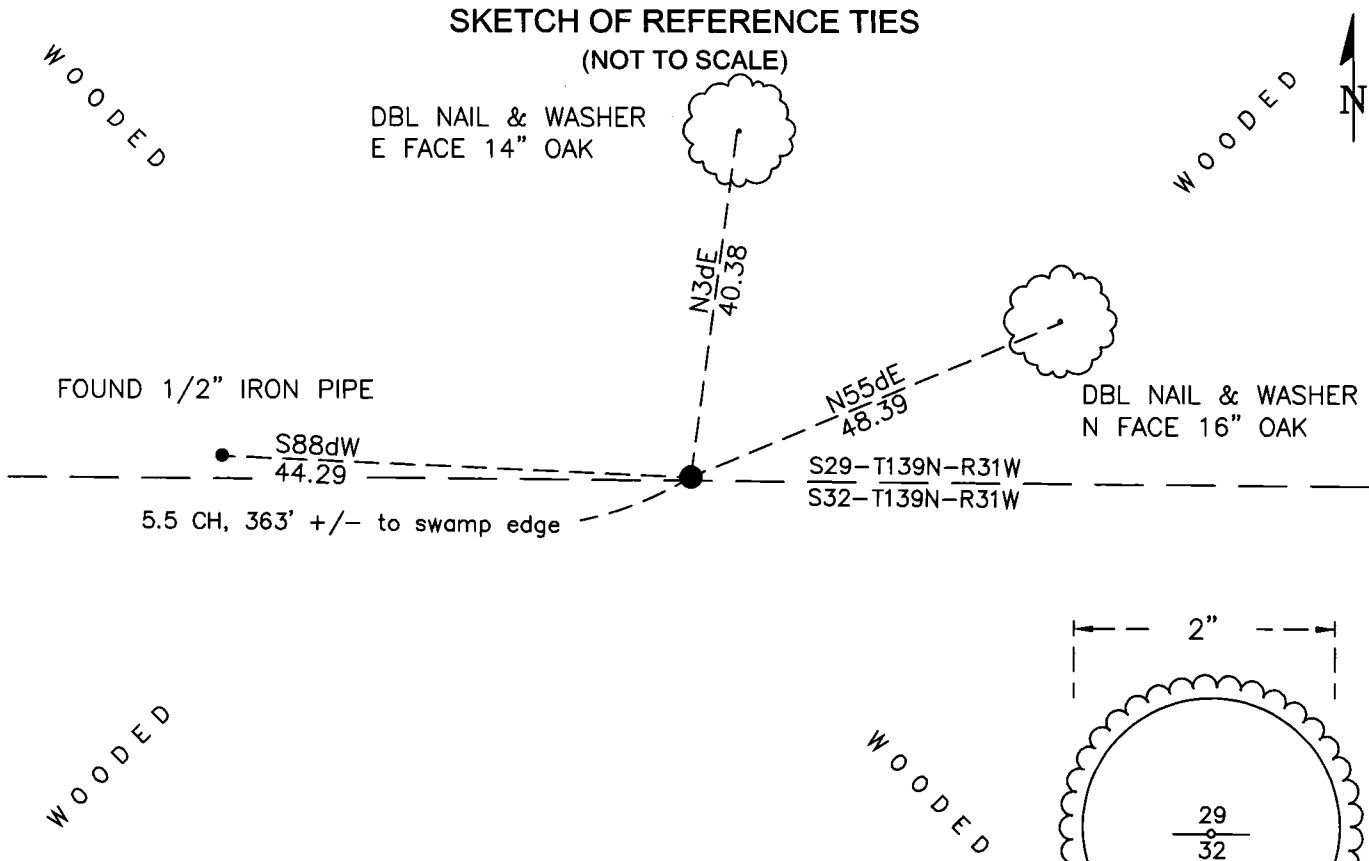
CERTIFICATE OF LOCATION OF GOVERNMENT CORNER

North 1/4 Corner of Section 32, Township 139 N, Range 31 W, 5th P.M.
 County of Cass, State of Minnesota

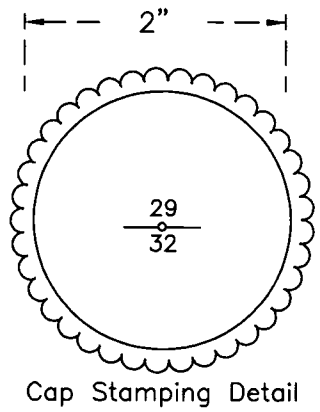
At the corner location shown on the sketch:

- On 5/16/23 found 1/2 inch diameter iron pipe at a "lost position"
- left monument as found lowered monument removed monument (explain)
- On 5/16/23 set 32 inch aluminum pipe with a 2 inch scalloped aluminum top
utilizing feature call/swamp edge called for in the GLO notes.

SKETCH OF REFERENCE TIES (NOT TO SCALE)



Cass County Coordinates
 (South Zone, 2011 Adj.)
 N: 105799.498
 E: 396896.386



Statement of evidence relative to this corner location is on the back of this page

I hereby certify that this survey, plan, or report was prepared by me or under my direct supervision and that I am a duly Licensed Land Surveyor under the laws of the state of Minnesota.

Daniel J. McAninch
 Daniel J. McAninch
 Cass County Surveyor
 MN License No. 25684

23 July 2024
 Date

STATEMENT OF EVIDENCE:

**NORTH QUARTER CORNER OF SECTION 32,
TOWNSHIP 139 NORTH, RANGE 31 WEST,
CASS COUNTY, MINNESOTA**

- 1870** The township exterior of original public land survey was completed under Mahlon Black. A wood post was set at this corner and ties were taken as follows.
14" W Pine S57d30'W 77 links (50.8 feet)
10" Aspen N12dWE 48 links (31.7 feet)
- 2009** A survey for Minnesota Power for a power line easement passing through Section 32, signed by Michael Cannon, L.S. 40035, shows a found monument symbol for this corner but provides no dimensions or monument details.
- 2021** A Cass County survey crew recovered a 1/2" iron pipe which fit very poorly with the swamp call to the West. Upon review of evidence, it was decided that the distance to the swamp edge would be utilized to set this corner as being the best available evidence of the original corner.
(Cass County Proj. 2022-029, CCSO Cert of Survey #10099)

**CASS COUNTY COORDINATES (NAD 83 2011 ADJUSTMENT, NORTH ZONE)
N-105799.498
E-396896.386**

General Land Office Information on file in the MN historical Society, St. Paul MN. Copies on file in the Cass County Highway Department/Surveyors Office (CCHD/SO).

For additional information contact:
**Cass County Highway Department
County Surveyor's Office
8045 County Road 12
Walker, MN 56484
218-547-1211**



A000704494

**OFFICE OF THE COUNTY RECORDER
CASS COUNTY, MINNESOTA
CERTIFIED, FILED, AND/OR
RECORDED ON**

7/24/2024 10:50:32 AM

**AS DOC #: A000704494
PAGES: 2
REC FEES: 0.00**

BY SW Dep TX#: 197981