

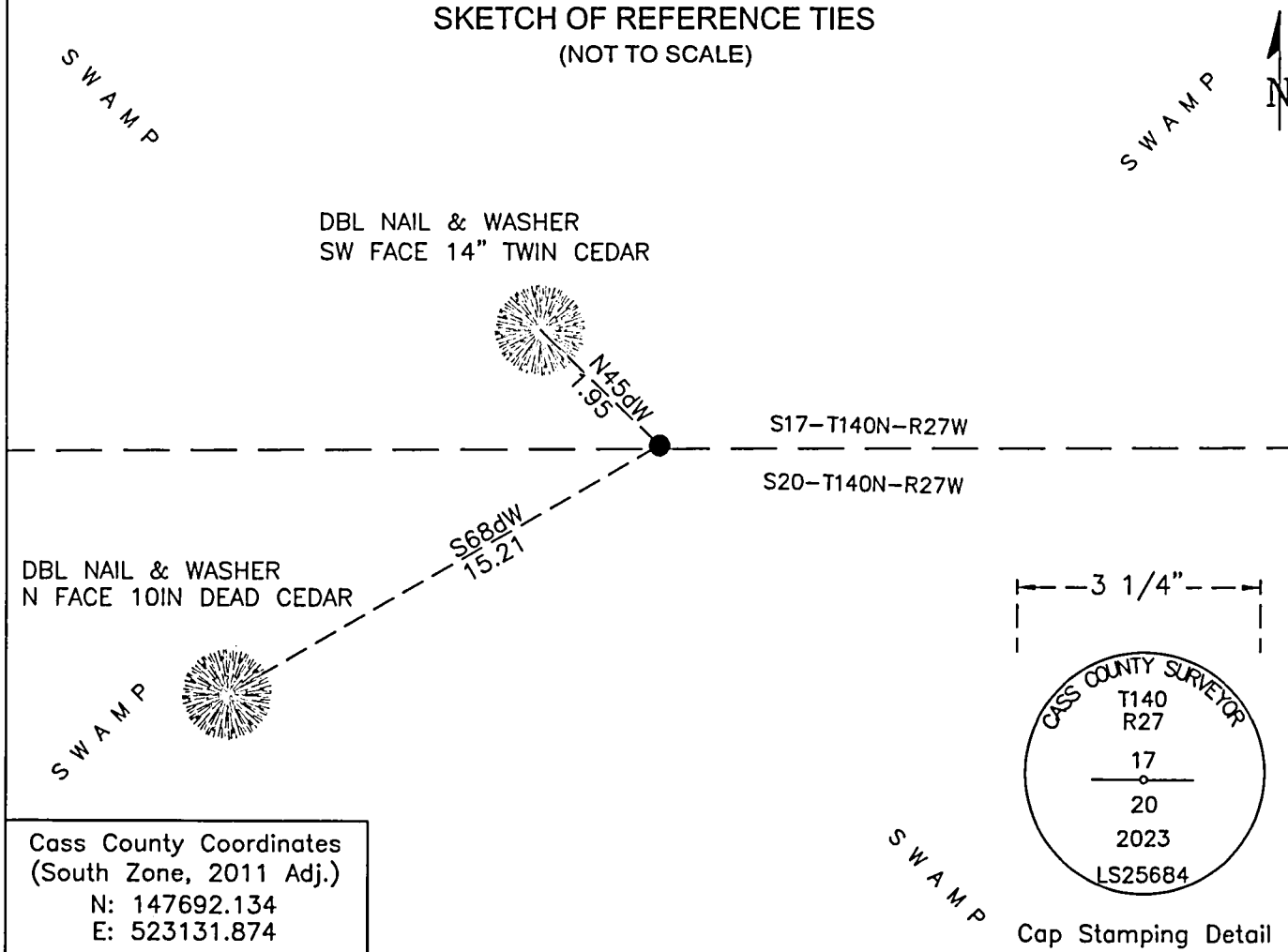
CERTIFICATE OF LOCATION OF GOVERNMENT CORNER

NORTH 1/4 Corner of Section 20, Township 140 N, Range 27 W, 5th P.M.
County of Cass, State of Minnesota

At the corner location shown on the sketch:

- On _____ found _____
- left monument as found lowered monument removed monument (explain)
- On 5/16/23 set 32 inch diameter alum pipe with a 3-1/4 inch diameter stamped aluminum cap.

SKETCH OF REFERENCE TIES (NOT TO SCALE)



Statement of evidence relative to this corner location is on the back of this page

I hereby certify that this survey, plan, or report was prepared by me or under my direct supervision and that I am a duly Licensed Land Surveyor under the laws of the state of Minnesota.

Daniel J. McAninch
 Daniel J. McAninch
 Cass County Surveyor
 MN License No. 25684

22 May 2024
 Date

Page 1 of 2 A000702940

STATEMENT OF EVIDENCE:

**NORTH QUARTER CORNER OF SECTION
20 TOWNSHIP 140 NORTH, RANGE 27
WEST, (TRELIPE TWP.), CASS COUNTY
MINNESOTA**

1870 During the original survey a wood post was set, by a GLO crew under Findall G. Winston, to mark the corner. The bearing ties were set. Copies on file in the Cass County Highway Department/Surveyors office. (CCHD/SO).

5" Tamarack	N44d50'W	12 links (7.9')
9" Tamarack	S6E	8 links (5.3')

1911 E.G. Williams found the old government stake and bearing tree stumps. (Curo Book 93, Page 13)

2023 A Cass County Survey crew conducted a thorough search using proration and feature calls but could not find a monument or bearing trees. The corner position was prorated between a North-South road presumed to be built on a 1/16 line in Section 17 and the monument found at the Northeast corner of Section 20. This was westerly of where the feature call indicated but consistent with the road built in Section 17 which was deemed to be better evidence. (Cass Proj 2023-011)

CASS COUNTY COORDINATES (NAD 83 2011 ADJUSTMENT)
N-147692.134
E-523131.874

General Land Office Information on file in the MN historical Society, St. Paul MN. Copies on file in the Cass County Highway Department/Surveyors Office (CCHD/SO).

For additional information contact:
Cass County Highway Department
County Surveyor's Office
8045 County Road 12
Walker, MN 56484
218-547-1211



A000702940

**OFFICE OF THE COUNTY RECORDER
CASS COUNTY, MINNESOTA
CERTIFIED, FILED, AND/OR
RECORDED ON**

5/22/2024 9:36:16 AM

AS DOC #: A000702940

PAGES: 2

REC FEES: 0.00

BY CF Dep TX#: 196682