



A000702745

OFFICE OF THE COUNTY RECORDER
CASS COUNTY, MINNESOTA
CERTIFIED, FILED, AND/OR
RECORDED ON

5/16/2024 1:21:58 PM

AS DOC #: A000702745
PAGES: 2
REC FEES: 0.00

BY SF _____ Dep TX#: 196577

I hereby certify that this survey, plan, or report was prepared by me or under my direct supervision and that I am a duly Licensed Land Surveyor under the laws of the state of Minnesota.

Daniel J. McAninch 16 May 2024
Date

Daniel J. McAninch
MN LIC. #25684

CERTIFICATE OF LOCATION OF GOVERNMENT CORNER CORRECTED 5-16-2024

MEANDER Corner of Section 28 & 33 Township 142 N, Range 27 W, 5th P.M.

County of Cass, State of Minnesota

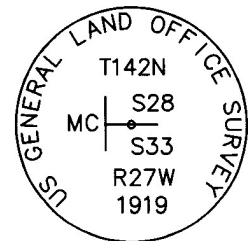
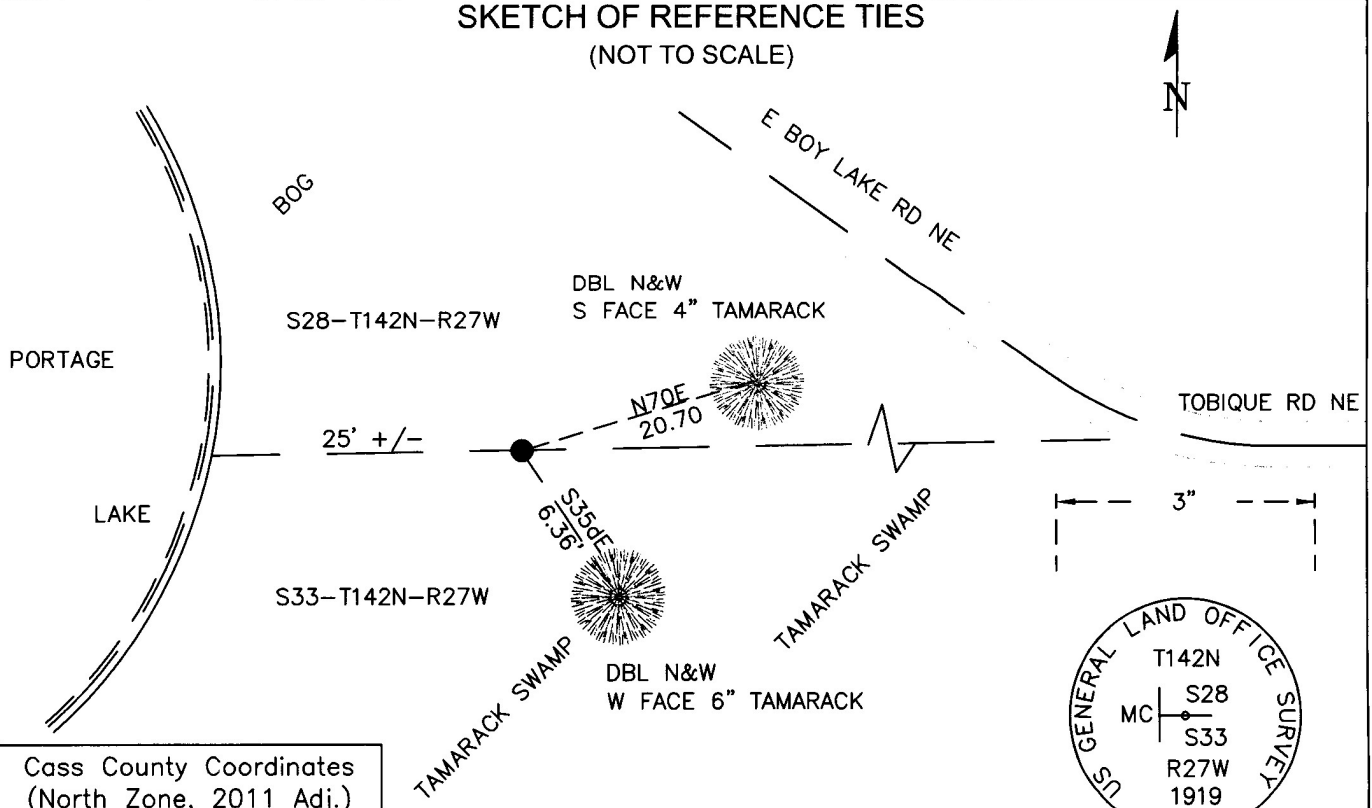
At the corner location shown on the sketch:

On Nov. 27, 2023 found 3" diameter G.L.O. brass capped monument.

left monument as found lowered monument removed monument (explain)

On _____ set _____

SKETCH OF REFERENCE TIES (NOT TO SCALE)



Cap Stamping Detail

Cass County Coordinates
(North Zone, 2011 Adj.)
N: 201198.698
E: 527032.013

STATEMENT OF EVIDENCE:

MEANDER CORNER OF SECTION 28&33 ,
TOWNSHIP 142 NORTH, RANGE 27 WEST,
(Rogers Township) CASS COUNTY, MINNESOTA

- 1870** During the original survey of the township a wood post was set, by a GLO crew under P.H. Conger, to mark the corner. The bearing ties were set. Copies on file in the Cass County Highway Department/Surveyors office. (CCHD/SO).

7" Tamarac	N10dW	32 links (21.2')
7" Tamarac	S64dE	23 links (15.2')

- 1919** During a dependent resurvey, the U.S. General Land Office survey crew reestablished this point from the original bearing tree remains and set a 3 foot long iron post 28" in the ground with a stamped brass cap.

FDBT 10" Tam	N19dW	32 links
FDBT 10" Tam Stump	S70d30'E	23 links
NEW BTs		
20" Jack Pine	N22d45'E	175 links
6" Cedar	S77d30'E	43 links

- 2023** A Cass County survey crew found the G.L.O. brass capped monument 25 feet easterly of the shore of Portage Lake while conducting a survey for a proposed bridge replacement. See page 1 for new ties.

CASS COUNTY COORDINATES (NAD 83 2011 ADJUSTMENT)**N-201198.698****E-527032.013**

General Land Office Information on file in the MN historical Society, St. Paul MN. Copies on file in the Cass County Highway Department/Surveyors Office (CCHD/SO).

For additional information contact:
Cass County Highway Department
County Surveyor's Office
8045 County Road 12
Walker, MN 56484
218-547-1211