



A000702613

OFFICE OF THE COUNTY RECORDER  
CASS COUNTY, MINNESOTA  
CERTIFIED, FILED, AND/OR  
RECORDED ON

5/10/2024 11:11:00 AM

AS DOC #: A000702613

PAGES: 2

REC FEES: 0.00

BY CF \_\_\_\_\_ Dep TX#: 196454

I hereby certify that this survey, plan, or report was prepared by me or under my direct supervision and that I am a duly Licensed Land Surveyor under the laws of the state of Minnesota.

*Daniel J. McNinch* 10<sup>th</sup> May 2024  
Date

Daniel J. McNinch  
MN LIC.# 25684

Page 1 of 2 A000702613

### CERTIFICATE OF LOCATION OF GOVERNMENT CORNER

EAST QUARTER Corner of Section 10, Township 134 N, Range R32 W P.M. 5th  
County of Cass, State of Minnesota

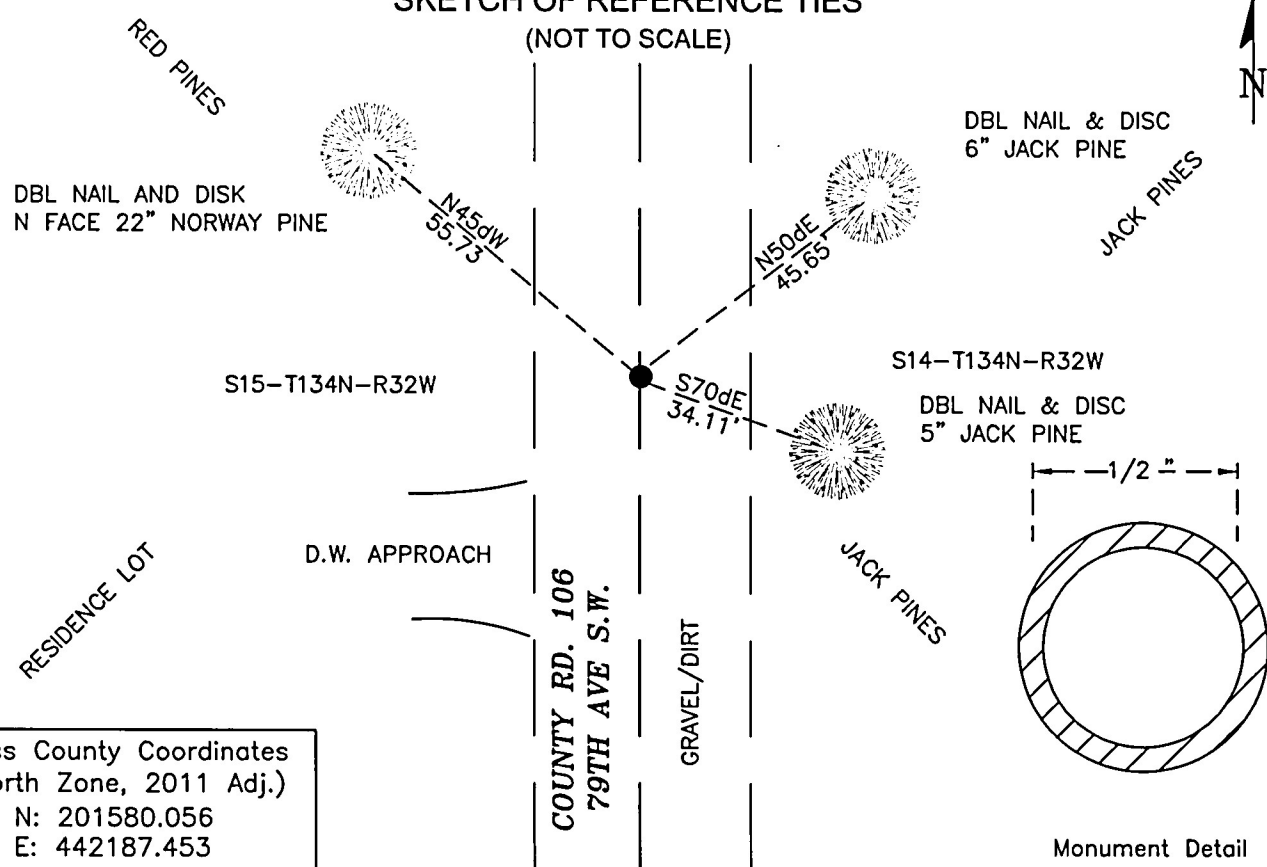
At the corner location shown on the sketch:

On March 5, 2024 found 1/2" diameter iron pipe

left monument as found     lowered monument     removed monument (explain)

On \_\_\_\_\_ set \_\_\_\_\_

### SKETCH OF REFERENCE TIES (NOT TO SCALE)



Cass County Coordinates  
(North Zone, 2011 Adj.)  
N: 201580.056  
E: 442187.453

**STATEMENT OF EVIDENCE:**

EAST QUARTER CORNER OF SECTION 10,  
TOWNSHIP 134 NORTH, RANGE 32 WEST,  
(Becker Township) CASS COUNTY, MINNESOTA

1870 During the original survey of the township exteriors a wood post was set, by a GLO crew under William P. Allen, to mark the corner. The bearing ties were set. Copies on file in the Cass County Highway Department/Surveyors office. (CCHD/SO).

3" Tamarac	N38dW	5 links (3.3')
7" Tamarac	N27dE	8 links (5.3')
6" Tamarac	S19dW	7 links (4.6')
6" Tamarac	S34dE	20 Links (13.2')

2022 Jim Kramer, L.S. 23668 of KLD shows an iron pipe found at this corner on a section breakdown graphic on a Certificate of Survey for land in Section 11. (CCSO COS 9745)

2023 A Cass County survey crew found a <sup>1/2</sup>" iron pipe on the centerline of County Road 106 that measured very closely with the Kramer breakdown. This monument was accepted due to its reasonable location and prior use.

**CASS COUNTY COORDINATES (NAD 83 2011 ADJUSTMENT)**

N- 201580.056

E- 442187.453

General Land Office Information on file in the MN historical Society, St. Paul MN. Copies on file in the Cass County Highway Department/Surveyors Office (CCHD/SO).

For additional information contact:  
**Cass County Highway Department**  
**County Surveyor's Office**  
8045 County Road 12  
Walker, MN 56484  
218-547-1211