



A000702616

OFFICE OF THE COUNTY RECORDER  
CASS COUNTY, MINNESOTA  
CERTIFIED, FILED, AND/OR  
RECORDED ON

5/10/2024 11:11:03 AM

AS DOC #: A000702616

PAGES: 2

REC FEES: 0.00

BY CF \_\_\_\_\_ Dep TX#: 196454

I hereby certify that this survey, plan, or report was prepared by me or under my direct supervision and that I am a duly Licensed Land Surveyor under the laws of the state of Minnesota.

*Daniel J. McAninch* 10 May 2024  
Daniel J. McAninch Date  
MN LIC.# 25684

Page 1 of 2 A000702616

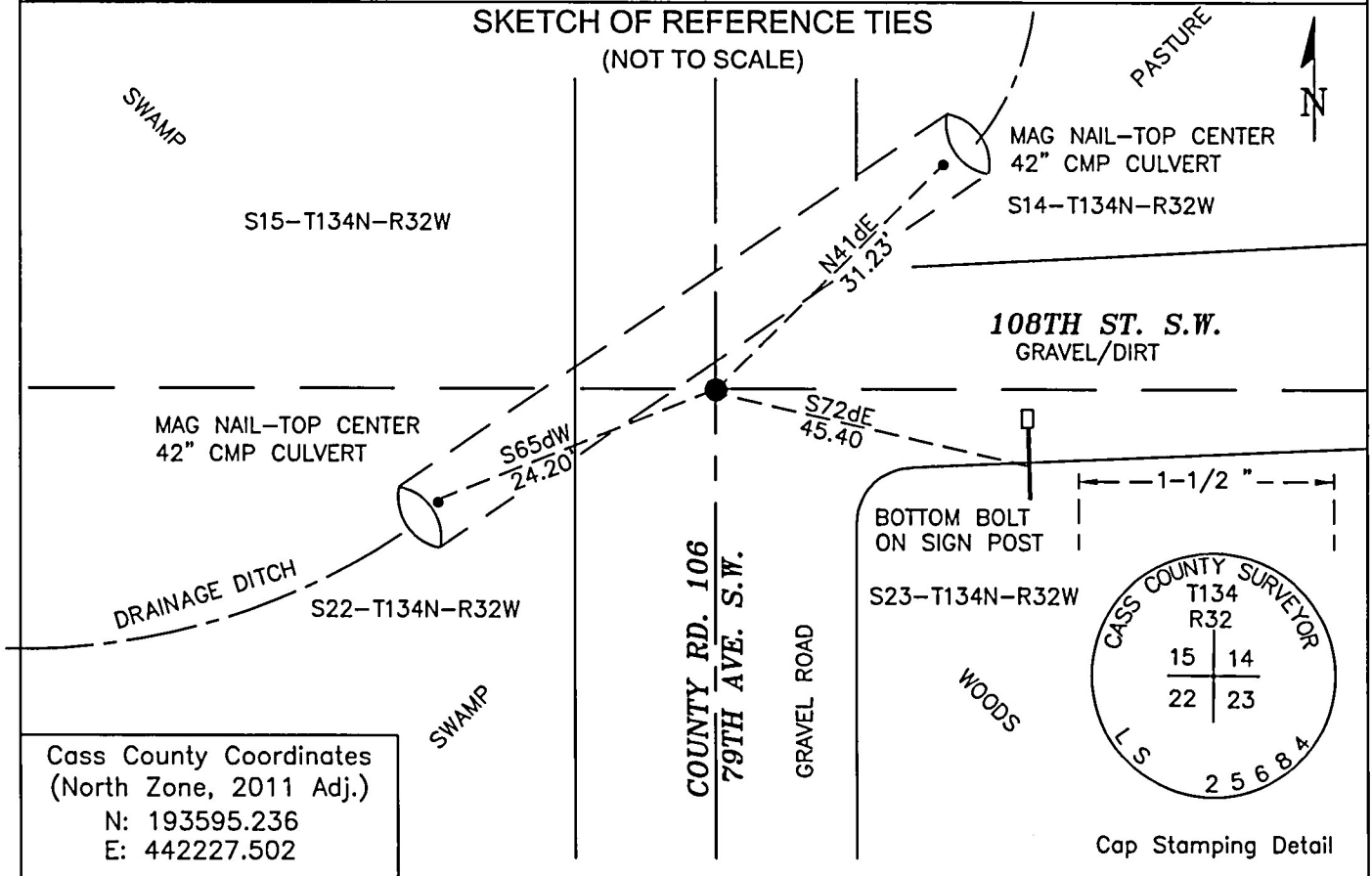
### CERTIFICATE OF LOCATION OF GOVERNMENT CORNER

NORTHEAST Corner of Section 22, Township 134 N., Range R32 W P.M. 5th  
County of Cass, State of Minnesota

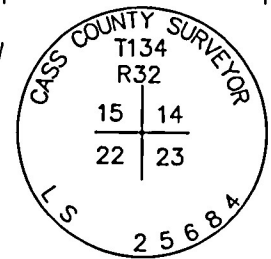
At the corner location shown on the sketch:

- On \_\_\_\_\_ found \_\_\_\_\_
- left monument as found     lowered monument     removed monument (explain)
- On March 5, 2024 set 1/2" diameter x 18" long iron pipe with 1-1/2" diameter stamped aluminum cap.

#### SKETCH OF REFERENCE TIES (NOT TO SCALE)



Cass County Coordinates  
(North Zone, 2011 Adj.)  
N: 193595.236  
E: 442227.502



Cap Stamping Detail

**STATEMENT OF EVIDENCE:**

**NORTHEAST CORNER OF SECTION 22,  
TOWNSHIP 134 NORTH, RANGE 32 WEST,  
(Becker Township) CASS COUNTY, MINNESOTA**

**1870** During the original survey of the of township exteriors a wood post was set, by a GLO crew under William P. Allen, to mark the corner. The bearing ties were set. Copies on file in the Cass County Highway Department/Surveyors office. (CCHD/SO).

12" Tamarac	N22dE	37 links (24.4')
8" Tamarac	N43dW	22 links (14.5')
7" Tamarac	S35d'W	18 links (11.9')
10" Spruce	S5dE	12 Links (7.9')

**1960** Aerial photo 11-111 available through Cass County records clearly show an easterly running road and tree lines along the presumed common line between Sections 14 and Section 23.

**1991** Becker Township indicates the location of claimed Township Road T26 running along the section lines easterly along the section line between Sections 14 and 23. (Doc. A000327814)

**2023** A Cass County survey crew conducted a thorough for physical evidence of this corner. Using the cardinal equivalent, the corner was monumented half way between the southwest corner of Section 22 and the northwest corner of Section 14 on the travelled centerline of County Road 106. This position agrees well with a best fit centerline of 108<sup>th</sup> Street S.W. and yields reasonable measured distances to other PLS corners when compared to original GLO distances.

**CASS COUNTY COORDINATES (NAD 83 2011 ADJUSTMENT)**

**N-193595.236**

**E-442227.502**

General Land Office Information on file in the MN historical Society, St. Paul MN. Copies on file in the Cass County Highway Department/Surveyors Office (CCHD/SO).

**For additional information contact:  
Cass County Highway Department  
County Surveyor's Office  
8045 County Road 12  
Walker, MN 56484  
218-547-1211**