



A000702358

OFFICE OF THE COUNTY RECORDER  
CASS COUNTY, MINNESOTA  
CERTIFIED, FILED, AND/OR  
RECORDED ON

4/29/2024 4:06:49 PM

AS DOC #: A000702358

PAGES: 2

REC FEES: 0.00

BY CF \_\_\_\_\_ Dep TX#: 196242

I hereby certify that this survey, plan, or report was prepared by me or under my direct supervision and that I am a duly Licensed Land Surveyor under the laws of the state of Minnesota.

*Jacob M. Backowski* 4/26/2024  
Jacob M. Backowski Date

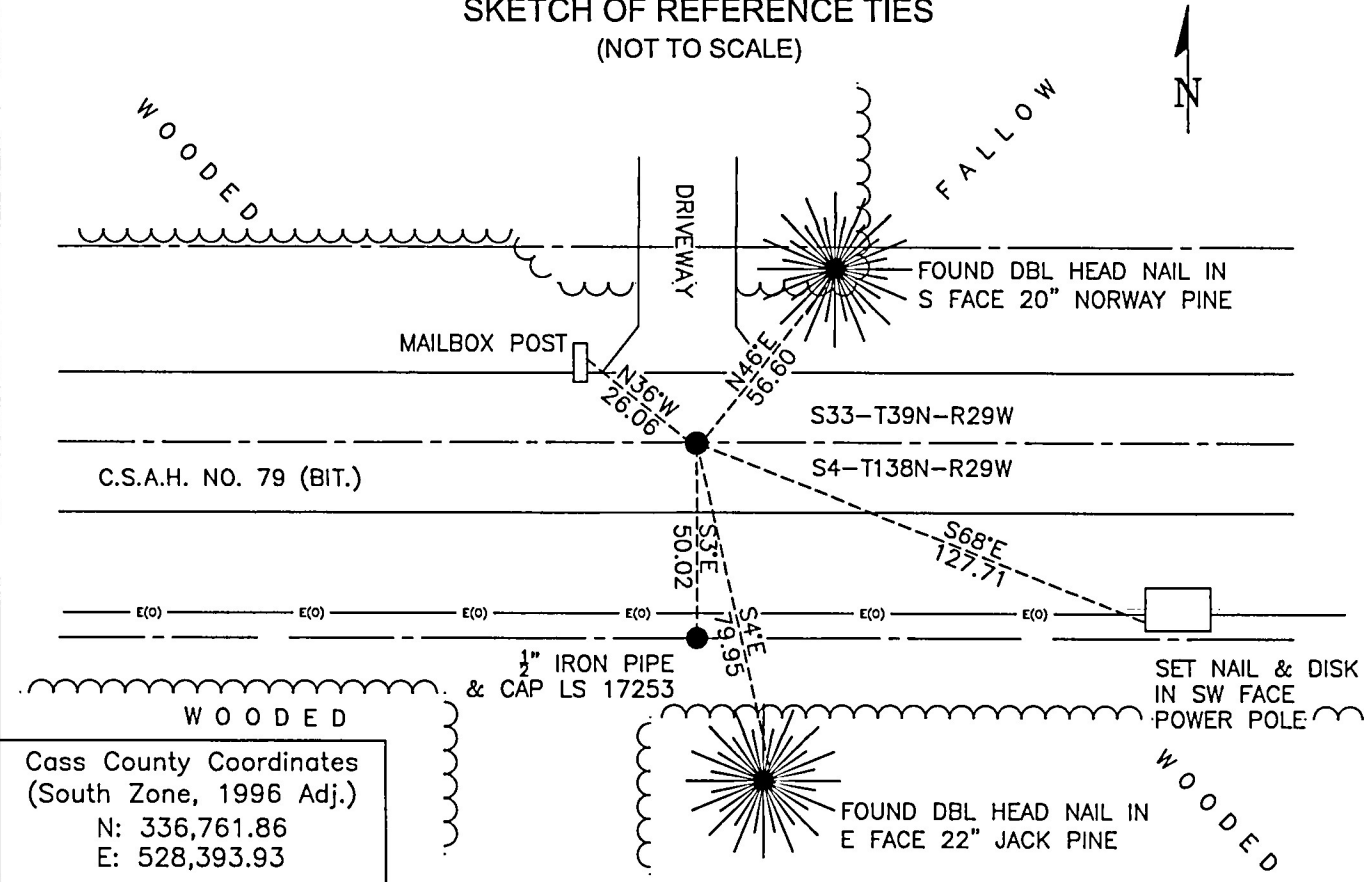
### CERTIFICATE OF LOCATION OF GOVERNMENT CORNER

North 1/4 Corner of Section 4, Township 138 N, Range 29 W, 5th P.M.  
County of Cass, State of Minnesota

At the corner location shown on the sketch:

- On June 23, 2023 found Two Bearing Trees from the COL dated 6/26/2007 by Todd R. Johnson LS 44869 filed as Document No. 529619
- left monument as found  lowered monument  removed monument (explain)
- On August 1, 2023 set a 5/8" x 18" Rebar with Yellow Plastic Cap stamped "BACKOWSKI PLS 51693" 0.15' below the surface of the road from the two ties of recorded COL

#### SKETCH OF REFERENCE TIES (NOT TO SCALE)



Page 1 of 2  
A000702358



Cass County Coordinates  
(South Zone, 1996 Adj.)  
N: 336,761.86  
E: 528,393.93

Statement of Evidence**North Quarter Corner Section 4 T138N, R29W**DATE

- 1865 The US General Land Office field notes, by Wright & Walker on file in the Secretary of State's Office, show this corner marked with a post and referenced by the following bearing trees:
- Aspen 8", S 63° W, 6 links  
Aspen 10", N 27° E, 40 links
- 1910 A.W. Moulster, May 13, 1910, referenced this corner location when retracing the North line of Section 4 and references the record Bearing trees. According to Book Misc. 005 Page 10. Information on file with the Cass County Surveyors Office.
- 1968 R.F. Schneider, LS 5740, set a 1 ½" iron pipe at the mid-point between the Southeast and Southwest corners of Section 33 T139N, R29W. He notes 3 bearing trees that were blazed by others.
- Red Oak 10", NW, 58.40'  
Red Oak 6", NNW, 60.35'  
Red Oak 8", SSE, 65.85'
- 1991 MNDOT Construction Plans for C.S.A.H. No. 79, Project No. S.A.P. 11-679-01 shows this corner location at the centerline of C.S.A.H. No. 79 station 26+51.6. Information on file with the Cass County Highway Department.
- 2000 Bruce Grivina, Central Minnesota Surveying, LS 17253, references this corner location at single proportionate measurement on a Certificate of Survey for the Northwest Quarter of the Northeast Quarter of Sec. 4, T138N R29W but does not reference the corner being set. Information on file with the Cass County Surveyors Office.
- 2004 Bruce Grivina, Westwood Professional Services, LS 17253, references this corner location at single proportionate measurement on a Certificate of Survey for part of the West Half of the Northwest Quarter of the Northeast Quarter of Sec. 4, T138N R29W but does not reference the corner being set. Information on file with the Cass County Surveyors Office.
- 2006 Bruce Grivina, Westwood Professional Services, LS 17253, references this corner location at single proportionate measurement on a Certificate of Survey for the East Half of the Northwest Quarter of the Northeast Quarter of Sec. 4, T138N R29W but does not reference the corner being set. Information on file with the Cass County Surveyors Office
- 2006 Todd R. Johnson, LS 44869, Certified this corner location after finding no evidence and set a mag nail at the mid-point between the Northeast and Northwest Corners of Section 4. Johnson notes: the distance found between the Northwest and Northeast Corners agrees to that found by Schneider in 1968 to within 0.40 feet and witnessed:
- Norway Pine 14", N 46° E, 56.60'  
Jack Pine 18", S 4° E, 79.95'
- 2023 Jacob Backowski, True North Surveys, LS 51693 searched for and found no evidence of the PK nail set by Mr. Johnson, however both bearing trees were recovered from Mr. Johnson's COL in 2006. The location calculated from Mr. Johnson's survey and bearing trees matches the lost location for this corner as reflected in previous surveys by Bruce Grivina and the 1968 survey by R.F. Schneider. The corner location was remonumented from the recovered ties with a 5/8" x 18" Rebar with a yellow plastic cap stamped "BACKOWSKI PLS 51693" 0.15' below the road surface and referenced by the following:
- Norway Pine 20", N 46° E, 56.60'  
Jack Pine 22", S 4° E, 79.95'  
Mailbox Post, N 36° W, 26.06'  
Power Pole, S 68° E, 127.71'  
½" Iron Pipe & Cap LS 17253, S 3° E, 50.02'