



A000702356

OFFICE OF THE COUNTY RECORDER
CASS COUNTY, MINNESOTA
CERTIFIED, FILED, AND/OR
RECORDED ON

4/29/2024 4:06:47 PM

AS DOC #: A000702356

PAGES: 2

REC FEES: 0.00

BY CF Dep TX#: 196242

I hereby certify that this survey, plan, or report was prepared by me or under my direct supervision and that I am a duly Licensed Land Surveyor under the laws of the state of Minnesota.

Jacob M. Backowski 4/26/2024
Jacob M. Backowski Date

CERTIFICATE OF LOCATION OF GOVERNMENT CORNER

East 1/4 Corner of Section 5, Township 138 N, Range 29 W, 5th P.M.
County of Cass, State of Minnesota

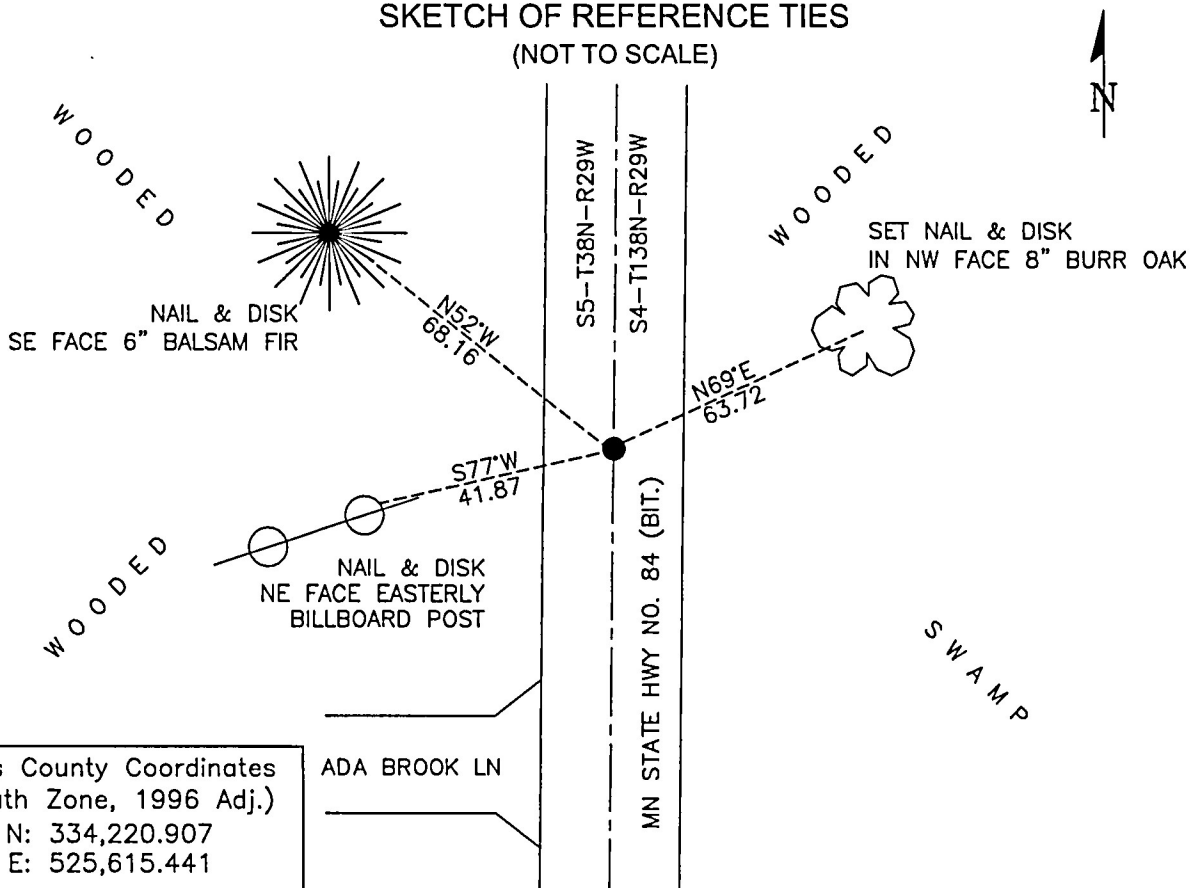
At the corner location shown on the sketch:

On June 23, 2023 found 1/2" iron pin in MN Hwy No. 84 0.4 feet below the surface

left monument as found lowered monument removed monument (explain)

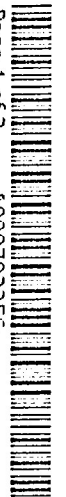
On _____ set _____

SKETCH OF REFERENCE TIES (NOT TO SCALE)



Cass County Coordinates
(South Zone, 1996 Adj.)
N: 334,220.907
E: 525,615.441

Page 1 of 2
A000702356



Statement of Evidence**East Quarter Corner Section 5 T138N, R29W**DATE

- 1865 The US General Land Office field notes, by Wright & Walker, on file in the Secretary of State's Office, show this corner marked with a post and referenced by the following bearing trees:
- Balsam 5", N 40° W, 3 links
Tamarack 8", S 88° E, 9 links
- 1936 John Curo, LS 1428, March 12, 1936, chained through this corner location while re-establishing the NE corner of Section 8, he notes that Bearing trees were destroyed from N-S road, with fence line running east constructed from possible older surveys completed by himself. According to Curo Book 247 Page 12-14, Information on file with the Cass County Surveyors Office
- 1936 John Curo, LS 1428, March 20, 1936, at a point 2587.0 of the NW corner of Section 4, drove a 60d spike in centerline of N-S road in line with old fence running east, according to Curo Book 419 Page 58, Information on file with the Cass County Surveyors Office, witnessed by:
- Jack Pine 15", N 30°10' E, 84.95'
Oak 12", N 58°10' W, 46.90'
Spruce 8", S 31°47' W, 53.50'
Fence corner post, S 88°40' E, 36.80'
- 1940 John Curo, LS 1428, recovered an old spike in centerline of N-S road between Sections 4 & 5, according to Curo Book 247 Page 09, Information on file with the Cass County Surveyors Office, witnessed by:
- Jack Pine 15", N 30°10' E, 84.95'
Oak 12", N 58°10' W, 46.90'
Spruce 8", S 31°47' W, 53.50'
Fence corner post, S 88°40' E, 36.80'
- 2008 Chris Hogle, Westwood, LS 43932, denotes an iron monument found in the centerline of MN St. Hwy. No. 84 between Sections 4 & 5, according to a Certificate of Survey for the North Half of the Northeast Quarter of the Southeast Quarter of Section 5. Information on file with the Cass County Surveyors Office.
- 2016 MNDOT Right-of-way Map No. 216-301, for State Project 1110-12RW, notes an iron pin at this location.
- 2023 Jacob Backowski, True North Surveys, PLS 51693 searched for, and found a 1/2" Iron Pin. This location matches the proportional measurements north and south according to the original GLO survey and is a similar monument to what was found according to the 1940 Curo survey and the 2016 MNDOT Right-of-way Map and was accepted as the corner location and referenced by the following:
- Balsam Fir 6", N 52° W, 68.16'
Burr Oak 8", N 69° E, 63.72'
Billboard Post, S 77° W, 41.87'