



A000701407

OFFICE OF THE COUNTY RECORDER
CASS COUNTY, MINNESOTA
CERTIFIED, FILED, AND/OR
RECORDED ON

3/19/2024 12:00:56 PM

AS DOC #: A000701407

PAGES: 2

REC FEES: 0.00

BY CF Dep TX#: 195451

Page 1 of 2 A000701407

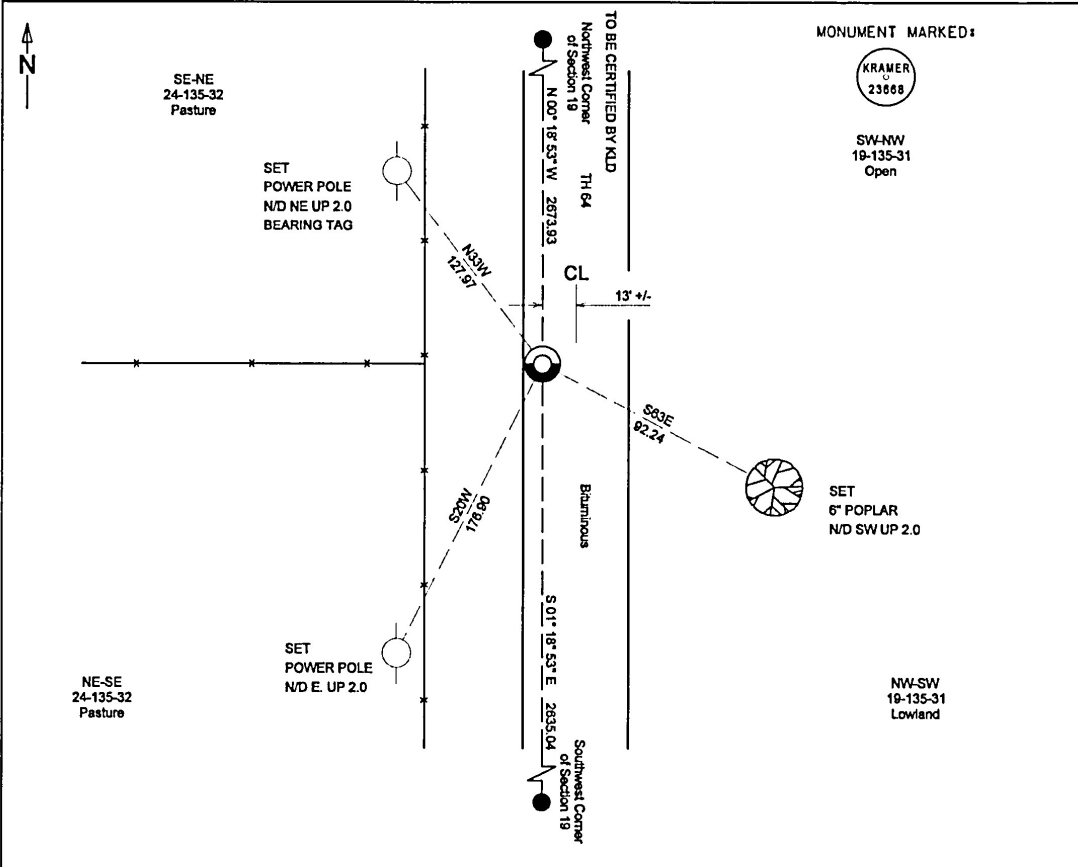
Index No. P-1

CERTIFICATE OF LOCATION OF GOVERNMENT CORNER

INDEX NO. P-1, West Quarter CORNER OF SECTION 19, TOWNSHIP 135, RANGE 31,
STATE OF MINNESOTA, COUNTY OF CASS.

AT THE CORNER LOCATION SHOWN ON THE SKETCH:

- ON 1-29-2024 FOUND A(N) Nothing
 - LEFT MONUMENT AS FOUND, LOWERED MONUMENT, REMOVED MONUMENT (EXPLAIN)
 - ON 1-29-2024 PLACED A(N) 1/2" IRON PIPE WITH PLASTIC SURVEYORS CAP STAMPED
- "KRAMER 23668" DOWN 0.1



I hereby certify that this survey, plan, or report was prepared by me or under my direct supervision, and that I am a duly Licensed Land Surveyor under the laws of the State of Minnesota. I further certify that this certificate of location of government corner is correct and complete to the best of my knowledge and belief.

Signature: [Signature]
James Kramer
Date: 03-15-2024
Reg. No. 23668

NAD 1983/1996 CASS COUNTY COORDINATES
N = 222588.143 E = 452676.628
Coordinates derived by RTK GPS (survey grade)

SKETCH OF REFERENCE TIES
(not to scale - bearings are magnetic)
Ties are measured to center of monument unless otherwise noted
UNITS = Metric English

KLD
1120 Industrial Park Road SW
Brainerd, MN 56601
218-829-6331

KRAMER LEAS DELEO
SURVEYING • ENGINEERING • PLANNING
BRainerd • ST. CLOUD

