

Page 1 of 2
A000698842

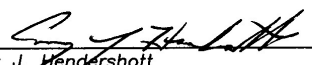


A000698842
OFFICE OF THE COUNTY RECORDER
CASS COUNTY, MINNESOTA
CERTIFIED, FILED, AND/OR
RECORDED ON
11/14/2023 11:28:20 AM
AS DOC #: A000698842
PAGES: 2
REC FEES: 0.00
KATHRYN M. NORBY
CASS COUNTY RECORDER
BY SF Dep TX#: 193296

Index No. N.0-03.0

CERTIFICATE OF LOCATION OF GOVERNMENT CORNER

I hereby certify that this survey, plan, or report was prepared by me or under my direct supervision and that I am a duly Registered Land Surveyor under the laws of the State of Minnesota.


Corey J. Hendershott

Date: 11/10/2023 License No: 45353

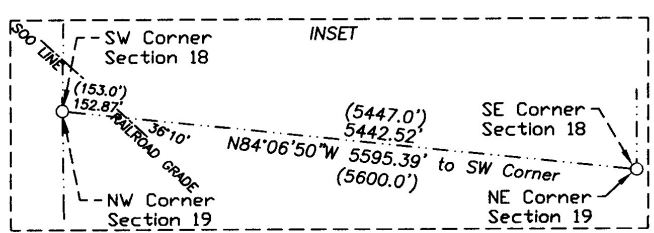
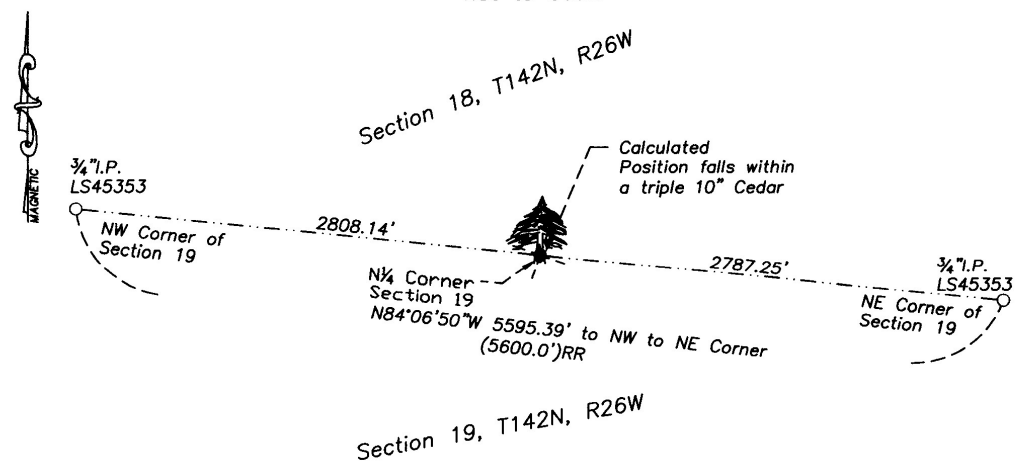
North Quarter Corner of Section 19, Township 142 North, Range 26 West of the 5th Principal Meridian. County of Cass, STATE OF MINNESOTA.

- On September 21, 2023 I searched for Gov't evidence, at Proportioned Position after construction the NW and NE Corner Section 19, using record stationing, record angle and distance from Railroad Survey, but found no evidence.
 - left monument as found; lowered monument; removed monuments (explain)
- On September 21, 2023, Nothing was set at this position. This position falls in the center of a triple 10" cedar.

decl: 1° EAST

SKETCH OF REFERENCE TIES

not to scale



Statement of evidence for this corner position is on the back of this page



Index No. N.0-03.0

Statement of Evidence

North Quarter corner of Section 19, Township 142 North, Range 26 West, 5th Principal Meridian.

July 1872 Hayward & Griffin, General Land Office (GLO) Deputy Surveyor, in the notes of the subdivision of Township 142 North, Range 27 West, set a post for the original corner and referenced it as follows:

4" Spruce	N 25° E	6 links (3.96 feet)
6" Spruce	S 38° E	12 links (7.92 feet)

The above records are on file with the Minnesota Historical Society in St. Paul, Minnesota, copies are filed with the Cass County Highway Department, Surveyor's Office (CCHD/SO).

Sept. 2023 While performing a private survey within Section 18, Township 142 North, Range 26 West. I Corey Hendershott recreated the centerline stationing from the Railroad Survey information, located the concrete culverts between Stations 726+72 and 640+40 and created a linear measurement scale factor, which was created based upon record distance and the actual distance between these culverts. A calculated position was created based upon the 1916 record railroad survey information at the northwest and northeast corner of Section 19 and this corner position is calculated at a Proportionate online position, between the two established Section corners. No evidence was found and nothing was set due to the fact that the calculated position fell in the middle of a triple 10" cedar.

County Coordinates (Cass County North)

Northing 211128.272
Easting 549140.076