



A000691833

OFFICE OF THE COUNTY RECORDER
CASS COUNTY, MINNESOTA
CERTIFIED, FILED, AND/OR
RECORDED ON

2/16/2023 10:18:50 AM

AS DOC #: A000691833

PAGES: 2

REC FEES: 0.00

KATHRYN M. NORBY
CASS COUNTY RECORDER

BY SF Dep TX#: 187457

I hereby certify that this survey, plan, or report was prepared by me or under my direct supervision and that I am a duly Licensed Land Surveyor under the laws of the state of Minnesota.

Daniel J. McAninch 16 February 2023
Daniel J. McAninch Date
Cass County Surveyor
MN. L.S. 25684

CERTIFICATE OF LOCATION OF GOVERNMENT CORNER

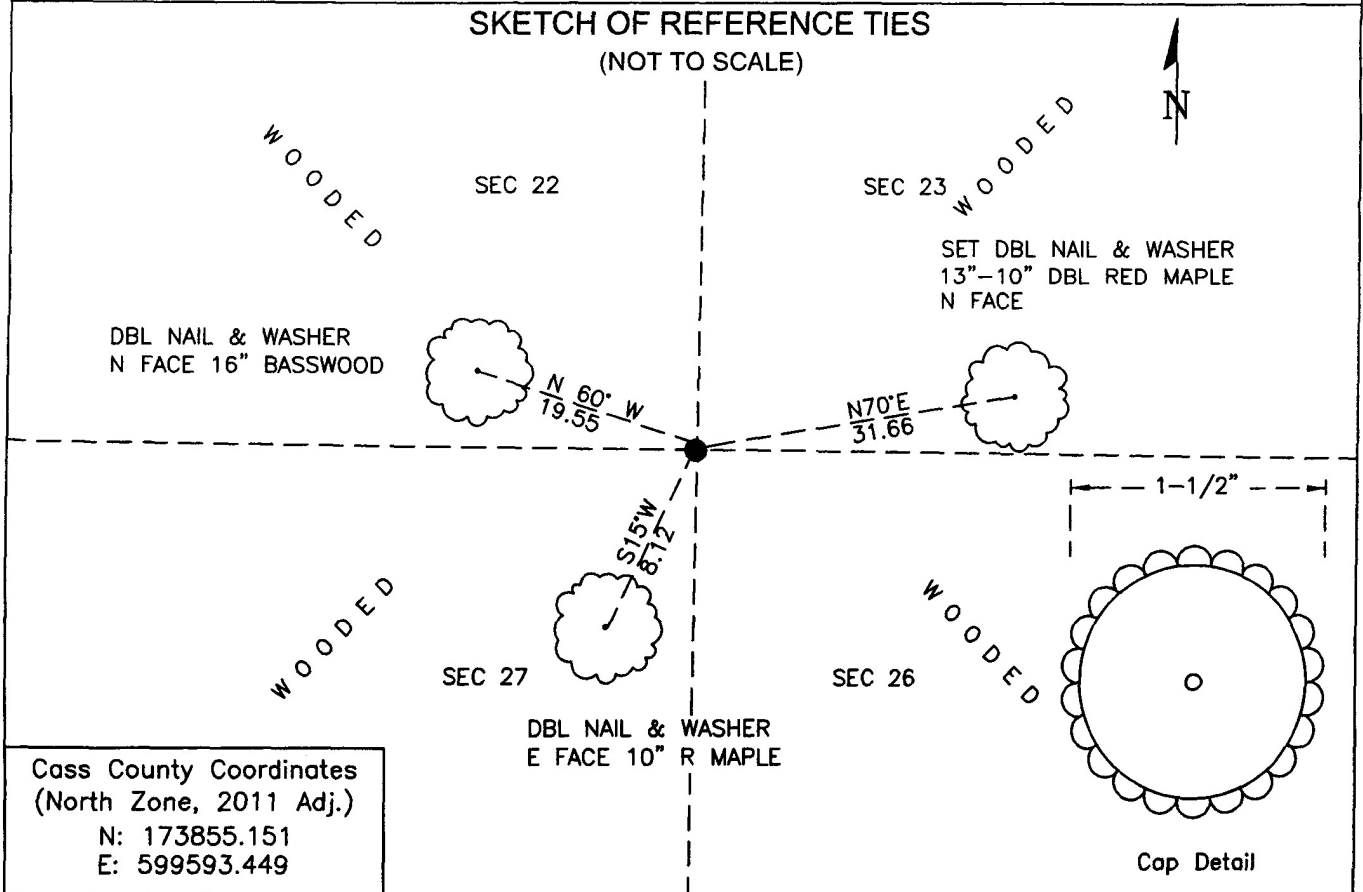
Northeast Corner of Section 27, Township 141 N, Range 25, W P.M. 5th
County of Cass, State of Minnesota

At the corner location shown on the sketch:

- On _____ found _____
- left monument as found lowered monument removed monument (explain)
- On May 5, 2022 set 1-1/2" x 32" long aluminum monument single proportion N-S
proportioned between swamp edges E-W.

SKETCH OF REFERENCE TIES

(NOT TO SCALE)



Cass County Coordinates
(North Zone, 2011 Adj.)
N: 173855.151
E: 599593.449



Statement of Evidence

Northeast Corner of Section 27, Township 141 North, Range 25 West, 5th Principal Meridian.

March 1871 A GLO crew under W. Allen and E. Putnam set a post 80 chains northerly of the southeast corner of Section 27.
16" W. Pine S 68° W 53 links (35.0 feet) 15" Aspen N 55° W 28 links (18.5 feet)
22" Spruce N 71° E 5 links (3.3 feet) 7" Spruce S 24° E 47 Links (31.0 feet)

April 2022 A Cass County crew conducted a thorough search for bearing trees and other evidence. The corner position was proportioned between swamp edges to the East and West, and between the monumented northeast corner of Section 22 and the monumented southeast corner of Section 27. (Proj. 2021-022)

The recovered and established references for the position are shown on the face of this document.

Analysis of the recovered record data, field evidence and survey measurements, indicates that the monument set by CCHD/SO is the obliterated location of this corner.

County Coordinates (Cass County North)

Northing 173855.151

Easting 599593.449

THIS DOCUMENT SUPERCEDES DOC. A000689785 WHICH HAD THE INCORRECT TOWNSHIP NUMBER ON PAGE 1.