



A000687992

OFFICE OF THE COUNTY RECORDER
CASS COUNTY, MINNESOTA
CERTIFIED, FILED, AND/OR
RECORDED ON

9/15/2022 10:22:08 AM

AS DOC #: A000687992

PAGES: 2

REC FEES: 0.00

KATHRYN M. NORBY
CASS COUNTY RECORDER

BY KF Dep TX#: 184351

Page 1 of 2 A000687992

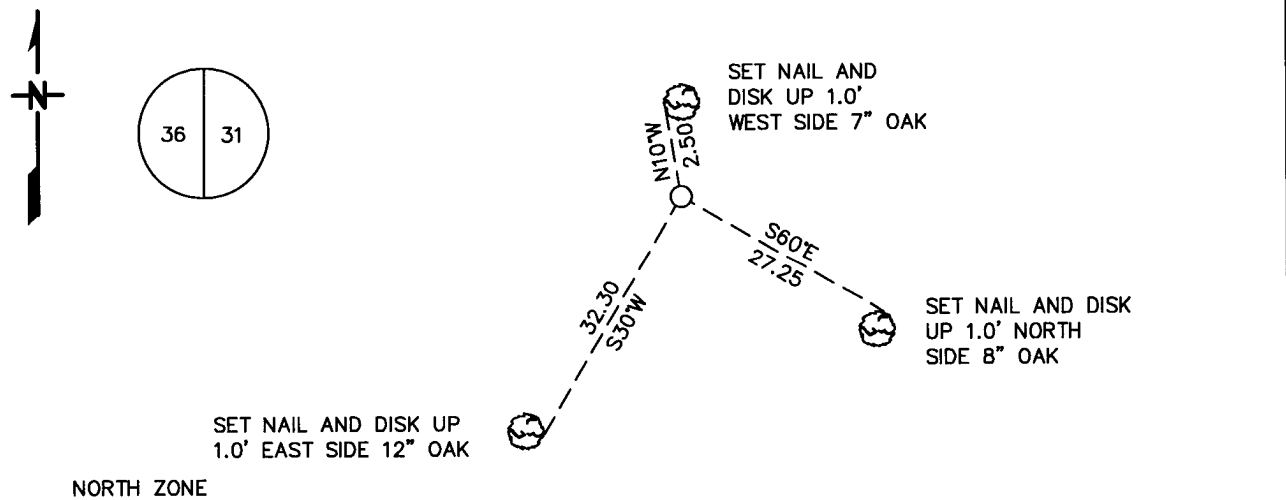
Index No. X.0-25.0

CERTIFICATE OF LOCATION OF GOVERNMENT CORNER

EAST QUARTER Corner of Section 36, Township 140 N, Range 25 W
4TH Principal Meridian, State of Minnesota, County of CASS

At the corner location shown on the sketch:

- On _____ found a _____
DATE
- left monument as found, lowered monument, removed monument (explain)
- On 4/26/06 Placed a 3/4" REBAR WITH CAP STAMPED "MN DNR LS 16098"
DATE



NORTH ZONE
CASS COUNTY
COORDINATE SYSTEM
NAD 1983 1996 ADJ.
N = 134266.93
E = 610377.89

BEARINGS ARE OBSERVED WITH A COMPASS

Statement of evidence for this corner location is on back of this page.

MARCH 2022
SFT00031

I hereby certify that this plan, specification, or report was prepared by me or under my direct supervision and that I am a duly Licensed Land Surveyor under the laws of the State of Minnesota.

SIGNATURE Joseph L. Fleisher DATE MARCH 23, 2022 License Number 44974
JOSEPH L. FLEISHER



X.0 – 25.0

East Quarter Corner Section 36, Township 140 North, Range 25 West

The Department of Natural Resources, Division of Lands and Minerals, contacted the following offices for information regarding this corner:

- Minnesota Historical Society
- Cass County Surveyor’s Office
- Northstar Surveying
- Kramer Leas Deleo

1864 The US General Land Office field notes, on file in the Minnesota Historical Society, show this corner to be marked with a post and the following bearing trees were marked:

5” Maple	S 30 W	15 links	9.9 feet
6” White Pine	N 22 W	15 links	9.9 feet

1919 A survey by H.D. Keath shows the east line of Section 36 to be 5280 feet.

2006 In April the Department of Natural Resources survey crew searched for evidence of the corner but found nothing. A 3/4-inch rebar with cap stamped “MN DNR LS 16098” was set at the lost position and ties were taken.

Northeast corner Section 36 bears	N 00-08-50 W	2640.26
Southeast corner Section 36 bears	S 00-08-50 E	2640.26