



A000687541

OFFICE OF THE COUNTY RECORDER
CASS COUNTY, MINNESOTA
CERTIFIED, FILED, AND/OR
RECORDED ON

8/31/2022 10:06:01 AM

AS DOC #: A000687541

PAGES: 2

REC FEES: 0.00

KATHRYN M. NORBY
CASS COUNTY RECORDER

BY SF Dep TX#: 184010

I hereby certify that this survey, plan, or report was prepared by me or under my direct supervision and that I am a duly Licensed Land Surveyor under the laws of the state of Minnesota.

Daniel J. McAninch 25, August 2022

Daniel J. McAninch Date
MN LIC. #25684

Page 1 of 2 A000687541

CERTIFICATE OF LOCATION OF GOVERNMENT CORNER

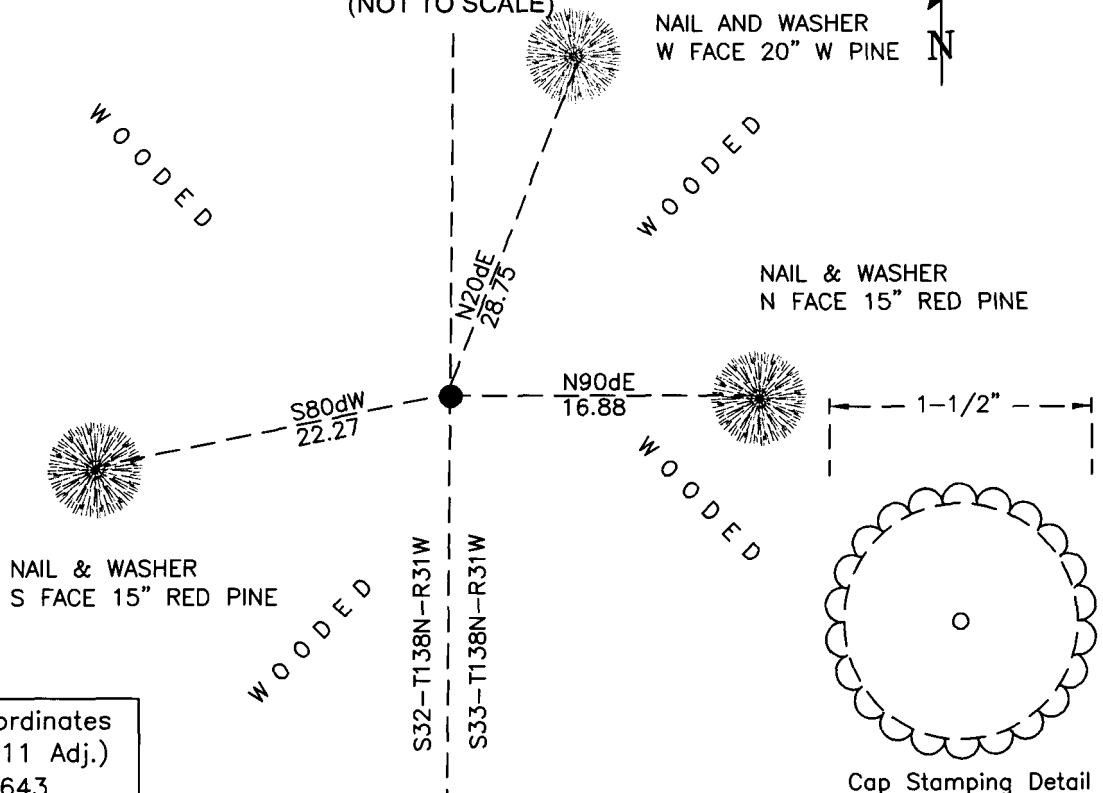
East 1/4 Corner of Section 32, Township 138 N, Range 31 W, 5th P.M.
County of Cass, State of Minnesota

At the corner location shown on the sketch:

- On _____ found _____
- left monument as found lowered monument removed monument (explain)
- On January 28, 2022 set a 1" dia. by 32" long aluminum monument, 1-1/2" cap

SKETCH OF REFERENCE TIES

(NOT TO SCALE)



Cass County Coordinates
(North Zone, 2011 Adj.)
N: 307,255.643
E: 461,605.717

STATEMENT OF EVIDENCE:

EAST QUARTER CORNER OF SECTION 32,
TOWNSHIP 138 NORTH, RANGE 31 WEST,
BULL MOOSE TWP., CASS COUNTY, MINNESOTA

1870 The original public land survey was completed and a wood post was set to mark the corner. The bearing ties were marked and measured to.

12" White Pine	S45dW	12 links (7.9')
8" White Pine	S50dE	18 links (11.9')

2022 During a boundary surveying Section 33, a Cass County survey crew conducted a thorough search in the area of this corner. Finding no physical or record evidence of the corner, a 1" diameter by 32" long aluminum monument with a 1-1/2" diameter magnetized cap was set midway on-line between the southeast and southwest corners of Section 32 which were certified and monumented.

CASS COUNTY COORDINATES (NAD 83 2011 ADJUSTMENT)**N-307,255.643****E-461,605.717**

General Land Office Information on file in the MN historical Society, St. Paul MN. Copies on file in the Cass County Highway Department/Surveyors Office (CCHD/SO).

For additional information contact:
Cass County Highway Department
County Surveyor's Office
8045 County Road 12
Walker, MN 56484
218-547-1211