



A000687372

OFFICE OF THE COUNTY RECORDER
CASS COUNTY, MINNESOTA
CERTIFIED, FILED, AND/OR
RECORDED ON

8/25/2022 11:01:45 AM

AS DOC #: A000687372

PAGES: 2

REC FEES: 0.00

KATHRYN M. NORBY
CASS COUNTY RECORDER

BY SF _____ Dep TX#: 183873

I hereby certify that this survey, plan, or report was prepared by me or under my direct supervision and that I am a duly Licensed Land Surveyor under the laws of the state of Minnesota.

Daniel J. McAninch 25 August, 2022

Daniel J. McAninch Date
MN LIC# 25684

Page 1 of 2 A000687372

CERTIFICATE OF LOCATION OF GOVERNMENT CORNER

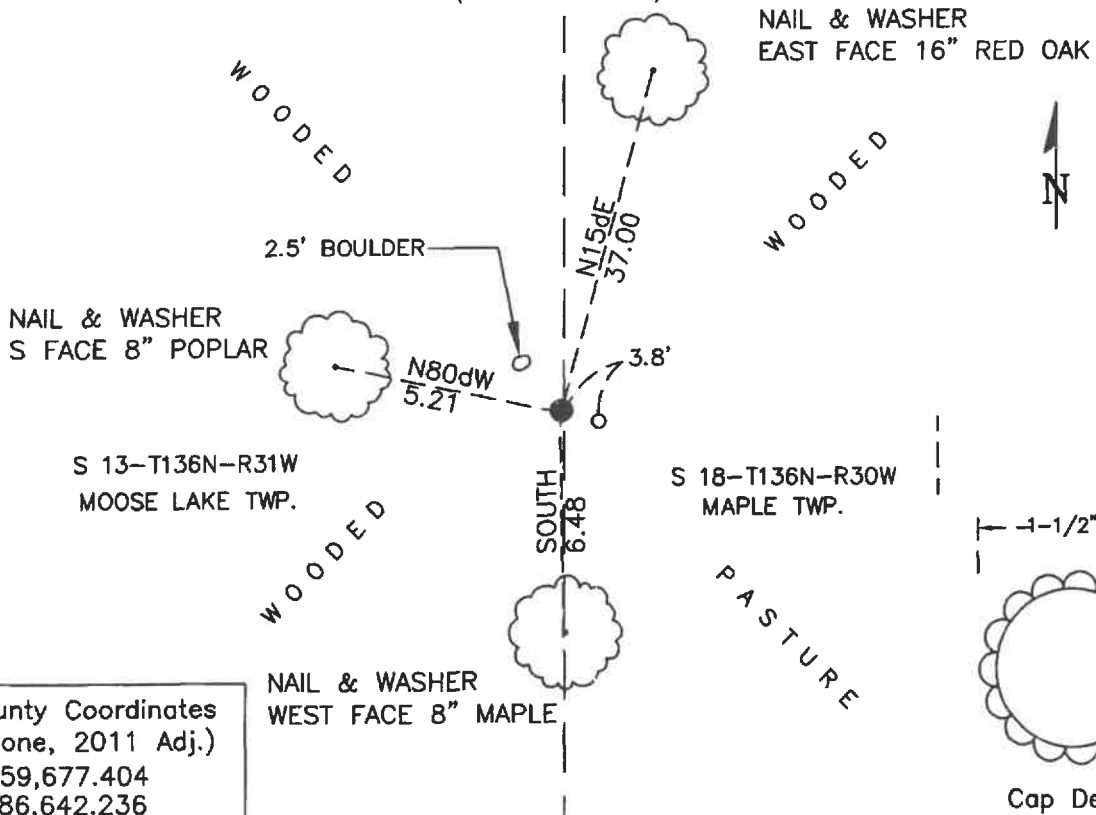
East 1/4 Corner of Section 13, Township 136 N, Range 31, W P.M. 5th
County of Cass, State of Minnesota

At the corner location shown on the sketch:

- On _____ found _____
- left monument as found lowered monument removed monument (explain)
- On January 12, 2021 set a 1" dia. aluminum monument with a 1-1/2" magnetized top.

SKETCH OF REFERENCE TIES

(NOT TO SCALE)



Cass County Coordinates
(South Zone, 2011 Adj.)
N 259,677.404
E: 486,642.236

STATEMENT OF EVIDENCE:

**EAST QUARTER CORNER OF SECTION 13,
TOWNSHIP 136 NORTH, RANGE 31 WEST,
MAPLE TWP., CASS COUNTY, MINNESOTA**

1870 The original public land survey was completed and a wood post was set to mark the corner. The bearing ties were marked and measured to.

6" Pine	S80dE	9 links (5.9')
5" Pine	N70dW	5 links (3.3')

2003 A Cass County comp sheet of a large area in the western part of T 136N R 30 W indicated a computed distance of 5299.92 feet between the southwest and northwest corners of Section 18. (CCSO Survey #1891)

2022 During a boundary survey, a Cass County survey crew conducted a thorough search in the vicinity of this corner. A fenceline running easterly was held as the best indicator of the North/South position. Given the close proximity of the corner to the line between Section corners, a 1-1/2" diameter magnetized aluminum monument was set on the section line approximately 3.8 feet westerly of the corner fence post. (County Project 2021-002) (Cass County Survey #9681)

CASS COUNTY COORDINATES (NAD 83 2011 ADJUSTMENT)

N-259,677.904

E-486,642.2310

General Land Office Information on file in the MN historical Society, St. Paul MN. Copies on file in the Cass County Highway Department/Surveyors Office (CCHD/SO).

For additional information contact:
Cass County Highway Department
County Surveyor's Office
8045 County Road 12
Walker, MN 56484
218-547-1211