



A000687342

OFFICE OF THE COUNTY RECORDER
CASS COUNTY, MINNESOTA
CERTIFIED, FILED, AND/OR
RECORDED ON

8/24/2022 10:55:49 AM

AS DOC #: A000687342

PAGES: 2

REC FEES: 0.00

KATHRYN M. NORBY
CASS COUNTY RECORDER

BY SF Dep TX#: 183845

I hereby certify that this survey, plan, or report was prepared by me or under my direct supervision and that I am a duly Licensed Land Surveyor under the laws of the state of Minnesota.

Daniel J. McAninch 24, August 2022

Daniel J. McAninch, L.S. Date
MN LIC. # 25684

Page 1 of 2 A000687342

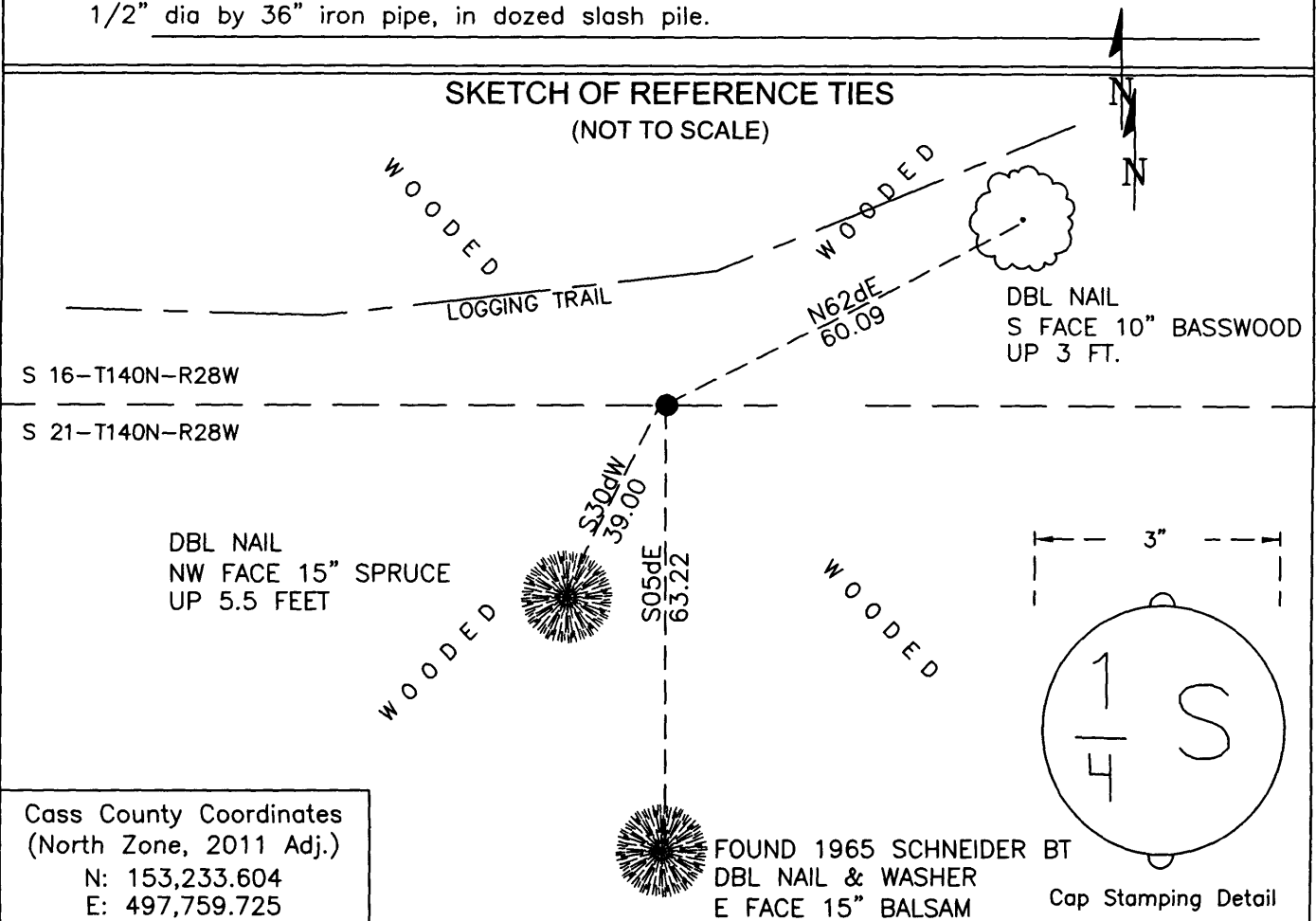
CERTIFICATE OF LOCATION OF GOVERNMENT CORNER

North 1/4 Corner of Section 21, Township 140 N, Range 28 W, 5th P.M.
County of Cass, State of Minnesota

At the corner location shown on the sketch:

- On April 11, 2021 found 1/2" diameter iron pipe at a lost position
- left monument as found lowered monument removed monument (explain)
- On April 20, 2021 set 1-1/2" diameter magnetized aluminum monument over a 1/2" dia by 36" iron pipe, in dozed slash pile.

SKETCH OF REFERENCE TIES (NOT TO SCALE)



Cass County Coordinates
(North Zone, 2011 Adj.)
N: 153,233.604
E: 497,759.725

STATEMENT OF EVIDENCE: NORTH QUARTER CORNER OF SECTION 21,
TOWNSHIP 140 NORTH, RANGE 28 WEST,
WABEDO TWP., CASS COUNTY, MINNESOTA

1870 The original public land survey set a wood post was set to mark the corner. The bearing trees were marked and measured to. Copies on file in the Cass County Highway Department/Surveyors office. (CCHD/SO).

22" White Pine	S20dE	20 links (13.2')
7" Oak	N84dE	10 links (6.6')

1920 Ben Clark found a Norway Pine post marked 1/4S with a surveyor's iron set "equal distant between section corners". He set a 30" by 3" diameter iron pipe with a plumbers cap marked "1/4 S". He indicates having set the corner post two years earlier. (County Book D, Page 188)

1965 R.F. Schneider found a 2" capped iron pipe while conducting a survey of land in Gov't Lot 3 of Section 21. (See CCSO Survey #6612, County Surveyor's Book D, Page 188)

5" Balsam	S14d30'E	63.7' (Book D, PP 459)
-----------	----------	------------------------

1976 R.F. Schneider shows a found an iron pipe in place prior to subdividing Government Lot 2, Section 21. Other later subdivision surveys follow that breakdown. (CCSO Survey #6711, misc surveys)

2022 A Cass County survey crew found a 1/2" diameter iron pipe set by KLD Surveying at a lost position. They also found a 15" Balsam in a location consistent with both the 1965 Schneider tie and monuments located along section subdivision lines to the South. The tree is the only Balsam nearby and is accepted as the BT used by Schneider. After confer with the supervising surveyor at KLD the lost position monument was removed and the crew set a 1-1/2" magnetized aluminum monument over a 1/2" diameter by 36" long iron pipe in a semi solid slash pile using the accepted bearing tree and located monuments to the South. It is believed that the logging activity that created the slash pile removed the monument set by Clark at the original GLO position. See Page 1 of 2 for ties.

General Land Office Information on file in the MN historical Society, St. Paul MN. Copies on file in the Cass County Highway Department/Surveyors Office (CCHD/SO).

CASS COUNTY COORDINATES (NAD 83 2011 ADJUSTMENT)

N-147,894.654

E-497,656.526

For additional information contact:
Cass County Highway Department
County Surveyor's Office
8045 County Road 12
Walker, MN 56484
218-547-1211