



A000683298

OFFICE OF THE COUNTY RECORDER
CASS COUNTY, MINNESOTA
CERTIFIED, FILED, AND/OR
RECORDED ON

4/12/2022 12:16:46 PM

AS DOC #: A000683298
PAGES: 2
REC FEES: 0.00

KATHRYN M. NORBY
CASS COUNTY RECORDER
BY KF Dep TX#: 180547

Page 1 of 2 A000683298

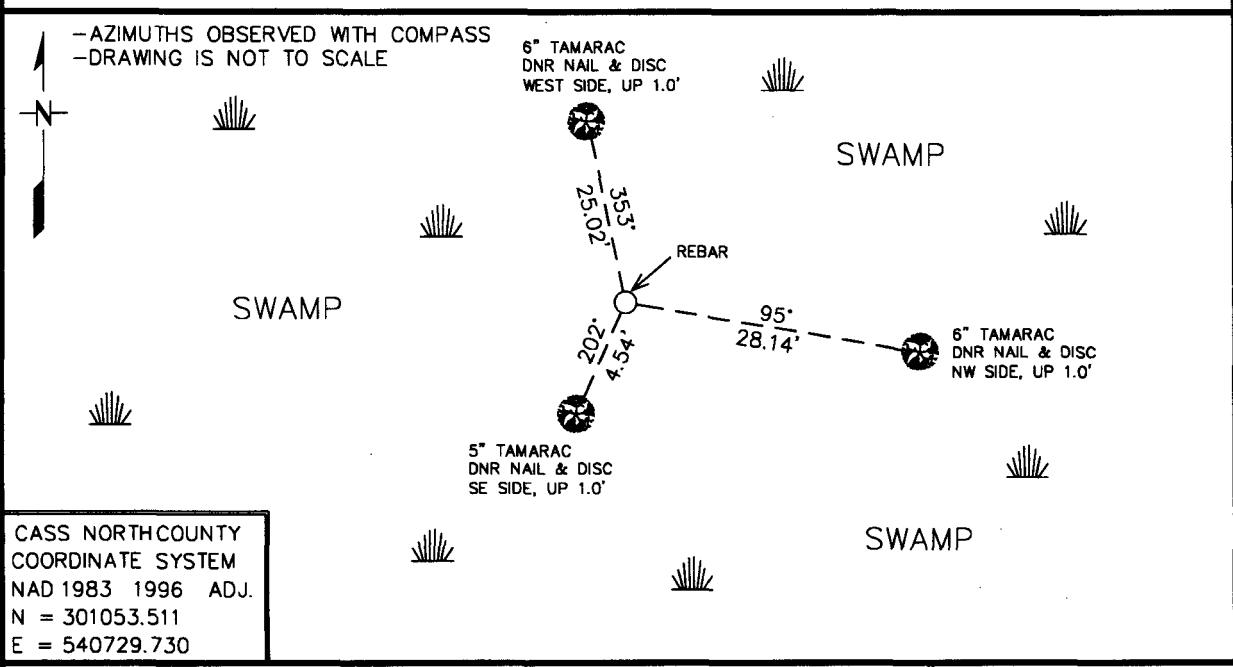
Index No. R-21

CERTIFICATE OF LOCATION OF GOVERNMENT CORNER

NORTHEAST Corner of Section 26, Township 145N, Range 27W
5th Principal Meridian, State of Minnesota, County of CASS

At the corner location shown on the sketch:

- On 3/10/2021 found a ORIGINAL GLO BEARING TREE SNAG AND CCC BEARING TREE SNAG WITH METAL TAG; BOTH BEARING TREES ARE DEAD STANDING.
 - left monument as found, lowered monument, removed monument (explain)
- On 3/10/2021 Placed a 3/4" REBAR WELDED TO A 5.5' STEEL POST WITH CAP STAMPED "MN DNR LS 48249". UP 1.3'. AT CORNER POSITION PER BT'S.



CASS NORTH COUNTY COORDINATE SYSTEM
NAD 1983 1996 ADJ.
N = 301053.511
E = 540729.730

Statement of evidence for this corner location is on back of this page. AMD 1/24/2022 GNA00002.00.00.01

I hereby certify that this plan, specification, or report was prepared by me or under my direct supervision and that I am a duly Licensed Land Surveyor under the laws of the State of Minnesota.

SIGNATURE Daniel A. Drusch DATE 3-31-2022 License Number 48249
DANIEL A. DRUSCH

Title: Land Surveyor Professional Engineer County Surveyor County Engineer

**Northeast Corner Section 26, Township 145 North, Range 27 West, 5th P.M.**

The DNR Land Survey Unit contacted the following offices for survey information on this corner:

Bureau of Land Management (BLM)
MN Secretary of State
Cass County Recorder, Auditor, Surveyor, and Highway Engineer
U.S. Forest Service
Itasca County Surveyor

1873 The U.S. General Land Office (GLO) survey notes and plat, on file in the MN Secretary of State's Office, describe this corner as a set post, from which:

16" N. Pine, N 2 ½ ° W, 540 links

5" J. Pine, N 3 ½ ° E, 390 links

4" Poplar, S 3° W, 475 links

1915 Forest Ranger S. K. Wright found a J. Pine stake three feet high and a 20" Norway NW, +/- 127 paces with blaze.

~1940 CCC Party Chief Earl Handy, found a squared stake in good condition, he places a poster on a 4" Larch on the W. side of stake 0.5 chs.

2021 March, the DNR Land Survey Unit conducted a search for the corner and found the NW Gov't bearing tree described by S.K. Wright (1915); a 24" burnt N. Pine stump and the Larch set by Earl Handy in ~1940, an 8" Tamarack stub, 4' high with poster on W face. Both bearing trees were observed with GPS. As a result of finding these two bearing trees, a distance-distance method, using the bearing tree data, was used to reestablish the corner position. The remaining two bearing trees were searched for, but determined to be gone. The computed position agrees very well with the record GLO swamp call north (i.e. computed = +/- 260' vs. GLO = 264') and was found to measure:

5342.844 feet (GLO = 5280 ft) from the Northeast corner section 23.

5096.389 feet (GLO = 5290.56 ft) from the Northeast corner section 27.

Analysis of the available information led me to accept the computed position as the corner. The found bearing trees were the best available evidence in reestablishing this corner. In addition, the computed position agrees with a record GLO swamp call. from the North Quarter Section 23.