



A000683297

OFFICE OF THE COUNTY RECORDER
CASS COUNTY, MINNESOTA
CERTIFIED, FILED, AND/OR
RECORDED ON

4/12/2022 12:16:45 PM

AS DOC #: A000683297

PAGES: 2

REC FEES: 0.00

KATHRYN M. NORBY
CASS COUNTY RECORDER

BY KF Dep TX#: 180547

Page 1 of 2 A000683297

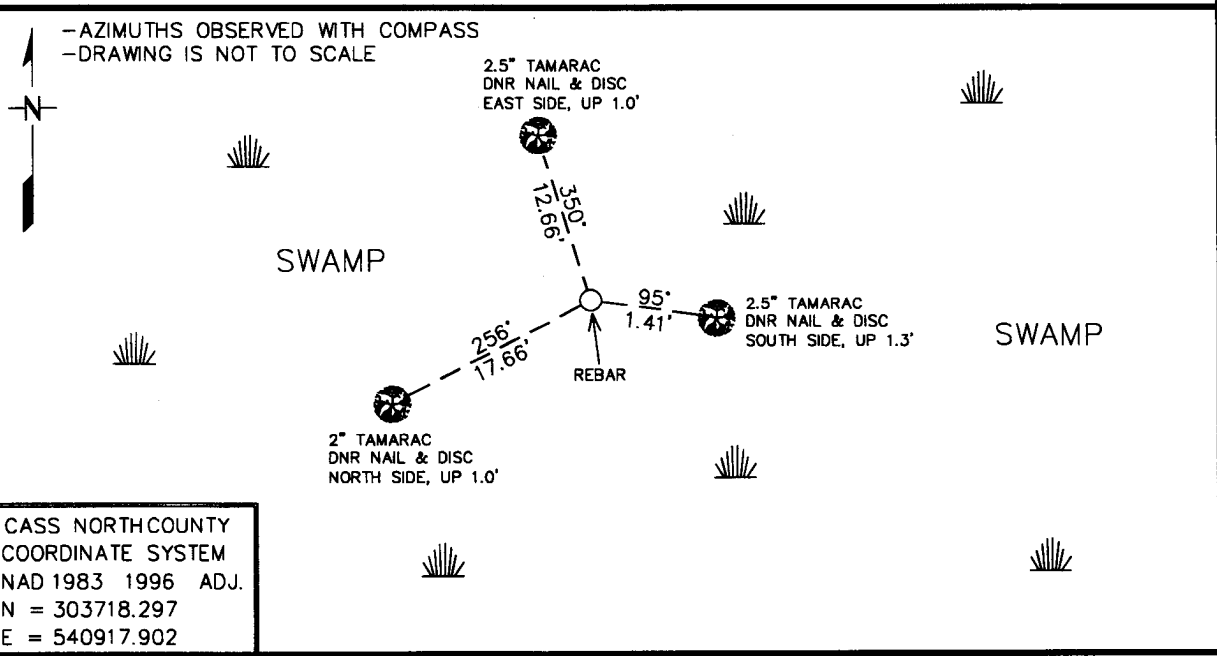
Index No. P-21

CERTIFICATE OF LOCATION OF GOVERNMENT CORNER

EAST QUARTER Corner of Section 23, Township 145N, Range 27W
5th Principal Meridian, State of Minnesota, County of CASS

At the corner location shown on the sketch:

- On 3/15/2021 found a NO ORIGINAL EVIDENCE
DATE
- left monument as found, lowered monument, removed monument (explain)
- On 1/11/2022 Placed a 3/4" REBAR WELDED TO A 5.0' STEEL POST WITH CAP
DATE
STAMPED "MN DNR LS 48249". UP 1.0'. IN A TAMARAC SWAMP.



Statement of evidence for this corner location is on back of this page. AMD 2/2/2022
GNA00002.00.00.01

I hereby certify that this plan, specification, or report was prepared by me or under my direct supervision and that I am a duly Licensed Land Surveyor under the laws of the State of Minnesota.

SIGNATURE Daniel A. Drusch DATE 3-31-2022 License Number 48249

Title: Land Surveyor Professional Engineer County Surveyor County Engineer



East Quarter Corner Section 23, Township 145 North, Range 27 West, 5th P.M.

The DNR Land Survey Unit contacted the following offices for survey information on this corner:

- Bureau of Land Management (BLM)
- MN Secretary of State
- Cass County Recorder, Auditor, Surveyor, and Highway Engineer
- U.S. Forest Service
- Itasca County Surveyor

1873 The U.S. General Land Office (GLO) survey notes and plat, on file in the MN Secretary of State's Office, describe this corner as a post set, from which:

6" Tam, N 10° W, 19 links

4" Tam, N 4° W, 50 links

2021 March, the DNR Land Survey Unit conducted a search for the corner but did not find any original evidence. As a result, this corner position was computed by Single Proportionate Measurement between the Northeast and Southeast corners of section 23. This computed position was found to measure:

2671.422 feet (GLO = 2640 ft) from adjoining corners.

Analysis of the available information led me to accept the computed position as the corner. Lack of government perpetuation bears out the need for the lost position.