



A000683293

OFFICE OF THE COUNTY RECORDER
CASS COUNTY, MINNESOTA
CERTIFIED, FILED, AND/OR
RECORDED ON

4/12/2022 12:16:41 PM

AS DOC #: A000683293

PAGES: 2

REC FEES: 0.00

KATHRYN M. NORBY
CASS COUNTY RECORDER

BY KF Dep TX#: 180547

Page 1 of 2 A000683293

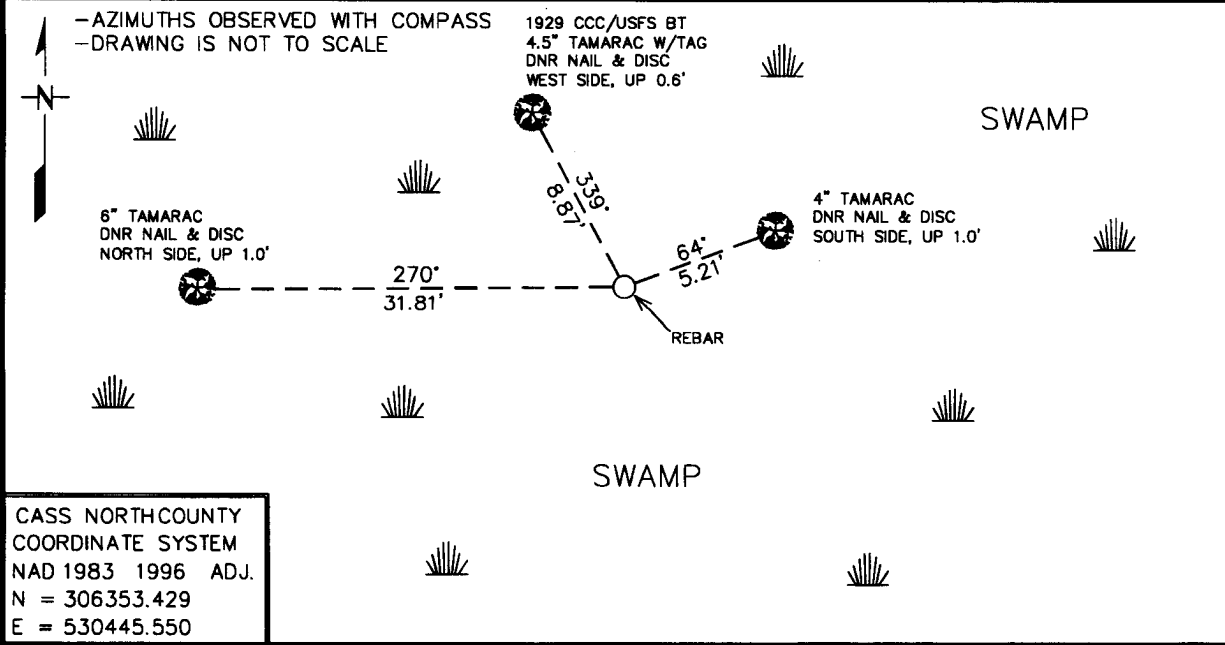
Index No. N-13

CERTIFICATE OF LOCATION OF GOVERNMENT CORNER

NORTHEAST Corner of Section 21, Township 145N, Range 27W
5th Principal Meridian, State of Minnesota, County of CASS

At the corner location shown on the sketch:

- On 3/25/2021 found a 1929 CCC/USFS BEARING TREE WITH METAL TAG; BEARING
DATE
TREE IS ALIVE AND WELL.
 - left monument as found, □ lowered monument, □ removed monument (explain)
- On 3/25/2021 Placed a 3/4" REBAR WELDED TO A 6.0' STEEL POST WITH CAP
DATE
STAMPED "MN DNR LS 48249", UP 1.3', AT CORNER POSITION PER CCC BT.



Statement of evidence for this corner location is on back of this page. AMD 1/25/2022
GNA00002.00.00.01

I hereby certify that this plan, specification, or report was prepared by me or under my direct supervision and that I am a duly Licensed Land Surveyor under the laws of the State of Minnesota.

SIGNATURE Daniel A. Drusch DATE 3-31-2022 License Number 48249
DANIEL A. DRUSCH

Title: ■ Land Surveyor □ Professional Engineer □ County Surveyor □ County Engineer



Northeast Corner Section 21, Township 145 North, Range 27 West, 5th P.M.

The DNR Land Survey Unit contacted the following offices for survey information on this corner:

Bureau of Land Management (BLM)
MN Secretary of State
Cass County Recorder, Auditor, Surveyor, and Highway Engineer
U.S. Forest Service
Itasca County Surveyor

1873 The U.S. General Land Office (GLO) survey notes and plat, on file in the MN Secretary of State's Office, describe this corner as a set post, from which:

- 6" Tam, N 50 ½ ° W, 40 links
- 4" Tam, N 17° E, 14 links
- 6" Tam, S 3 ½° W, 22 links
- 4" Tam, S 34° E, 10 links

1929 November, CCC Emile Juntinnen found a 2x2x36 stake and set a poster on a 2 1/2 " Tam, S 21° E, 0.13 chs

2021 March, the DNR Land Survey Unit conducted a search for the corner and found the Southeast CCC bearing tree described by Juntinnen; a 4 1/2" Tam and tag. Bearing tree was observed with GPS. As a result of finding this bearing tree, a distance-azimuth from the tree was used to reestablish the corner position. The computed position agrees very well with the record GLO swamp call North (i.e. +/-140' vs. GLO = 132') and West (i.e. +/- 200' vs. GLO = 198'). This computed position was found to measure:

- 5420.318 feet (GLO = 5275.38 ft) from the Northeast corner section 20.
- 5340.523 feet (GLO = 5280 ft) from the Northeast corner section 1
- 5331.108 feet (GLO = 5287.92 ft) from the Northeast corner section 22.
- 5486.946 feet (GLO = 5280 ft) from the Northeast corner section 28.

Analysis of the available information led me to accept the computed position as the corner. The found bearing tree was the best available evidence in reestablishing this corner. In addition, the computed position agrees with the record GLO swamp call.