



A000683291

OFFICE OF THE COUNTY RECORDER
CASS COUNTY, MINNESOTA
CERTIFIED, FILED, AND/OR
RECORDED ON

4/12/2022 12:16:39 PM

AS DOC #: A000683291

PAGES: 2

REC FEES: 0.00

KATHRYN M. NORBY
CASS COUNTY RECORDER

BY KF Dep TX#: 180547

Page 1 of 2 A000683291

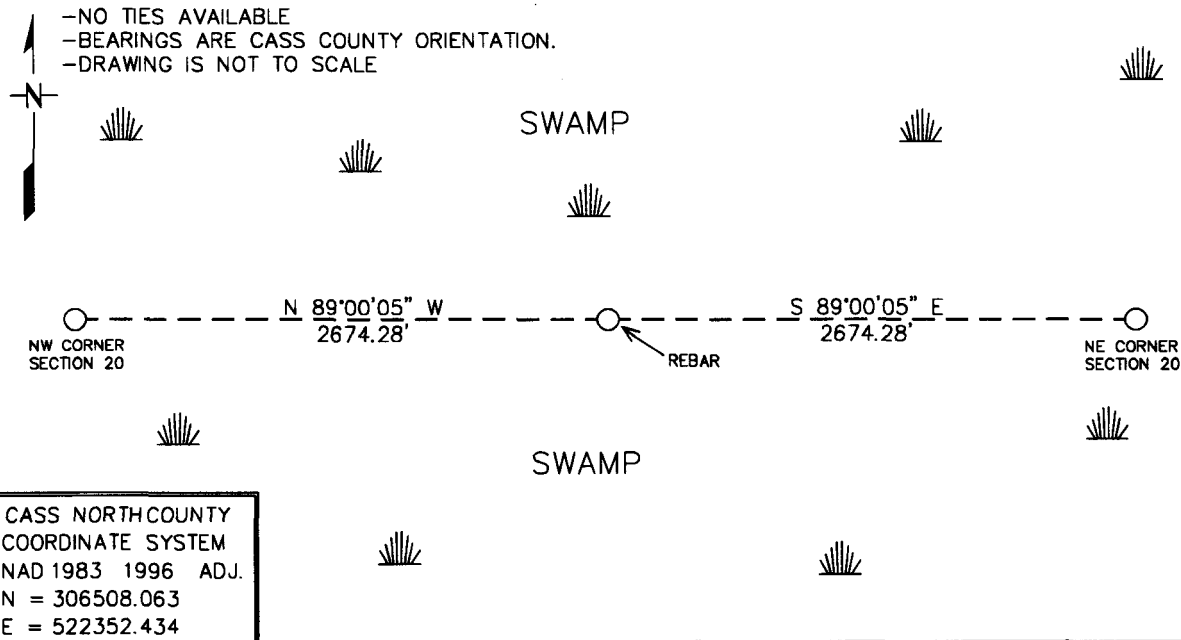
Index No. N-7

CERTIFICATE OF LOCATION OF GOVERNMENT CORNER

NORTH QUARTER Corner of Section 20, Township 145N, Range 27W
5th Principal Meridian, State of Minnesota, County of CASS

At the corner location shown on the sketch:

- On 3/3/2021 found a NO ORIGINAL EVIDENCE
DATE
- left monument as found, lowered monument, removed monument (explain)
- On 12/21/2021 Placed a 3/4" REBAR WELDED TO A 8.0' STEEL POST WITH CAP
DATE
STAMPED "MN DNR LS 48249", UP 1.0', IN OPEN SWAMP.



Statement of evidence for this corner location is on back of this page. AMD 2/2/2022
GNA00002.00.00.01

I hereby certify that this plan, specification, or report was prepared by me or under my direct supervision and that I am a duly Licensed Land Surveyor under the laws of the State of Minnesota.

SIGNATURE Daniel A. Drusch DATE 3-31-2022 License Number 48249
DANIEL A. DRUSCH

Title: Land Surveyor Professional Engineer County Surveyor County Engineer

**North Quarter Corner Section 20, Township 145 North, Range 27 West, 5th P.M.**

The DNR Land Survey Unit contacted the following offices for survey information on this corner:

Bureau of Land Management (BLM)
MN Secretary of State
Cass County Recorder, Auditor, Surveyor, and Highway Engineer
U.S. Forest Service
Itasca County Surveyor

- 1873 The U.S. General Land Office (GLO) survey notes and plat, on file in the MN Secretary of State's Office, describe this corner as a post on point of ridge in swamp, from which ties: 6" Jack Pine, South 85° East, 500 links
- 1929 E. Juntunen, CCC, Squared wood post, good condition, 2x2x24 and N. Pine 12", E 4° S, 2.64 chs, corner genuine? Yes. Place a metal poster on N. Pine 12", S side, corner bears N 82° 30' E, 2.64 chs.
- 1940 Layton, Schaitberger, Phelps, use corner, but don't show any ties.
- 2021 March, the DNR Land Survey Unit conducted a search for the corner but did not find any original evidence. As a result, this corner position was computed by Single Proportionate Measurement between the Northwest and Northeast corners of section 20. This computed position was found to measure:

2674.281 feet (GLO = 2640.66 ft) from adjoining corners.

Analysis of the available information led me to accept the computed position for the corner. Lack of government perpetuation bears out the need for the lost position.