



A000683288

OFFICE OF THE COUNTY RECORDER
CASS COUNTY, MINNESOTA
CERTIFIED, FILED, AND/OR
RECORDED ON

4/12/2022 12:16:36 PM

AS DOC #: A000683288

PAGES: 2

REC FEES: 0.00

KATHRYN M. NORBY
CASS COUNTY RECORDER

BY KF Dep TX#: 180547

Page 1 of 2 A000683288

Index No. J-5

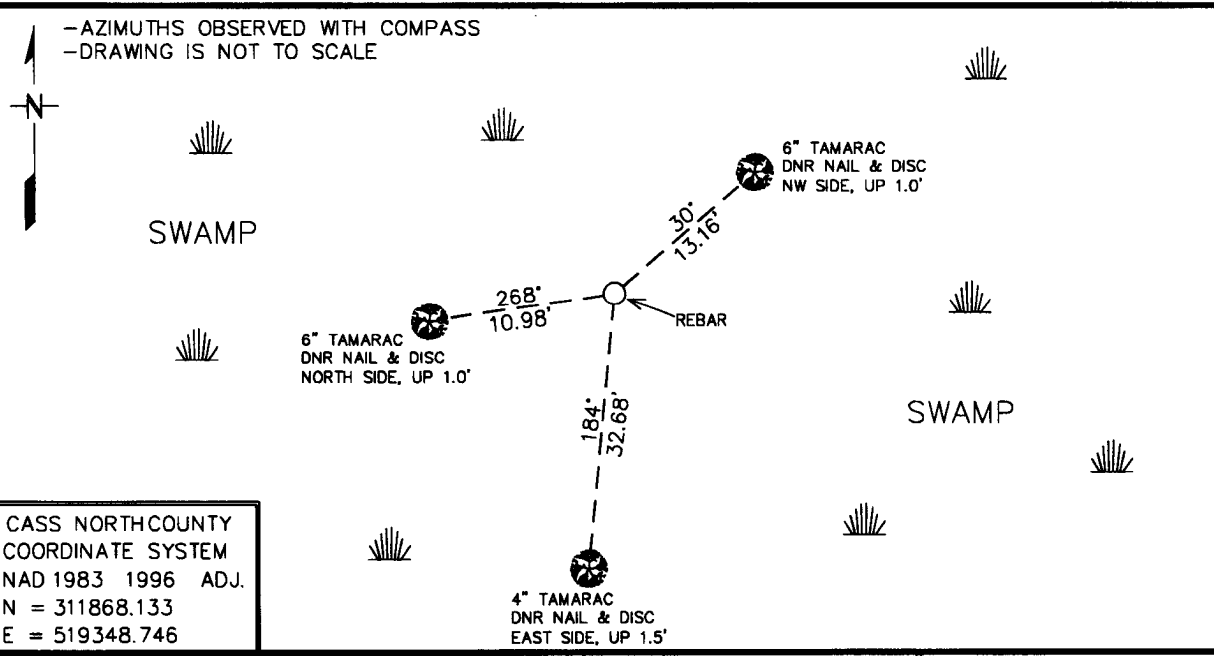
CERTIFICATE OF LOCATION OF GOVERNMENT CORNER

NORTHEAST Corner of Section 18, Township 145N, Range 27W

5th Principal Meridian, State of Minnesota, County of CASS

At the corner location shown on the sketch:

- On 2/23/2021 found a WOOD POST REMAINS AND 1920 CCC/USFS METAL TAG
DATE
IN FALLEN 6.5" TAMARAC.
 left monument as found, lowered monument, removed monument (explain)
- On 2/23/2021 Placed a 3/4" REBAR WELDED TO A 5.5' STEEL POST WITH CAP
DATE
STAMPED "MN DNR LS 48249", UP 1.0', AT POSITION OF FOUND POST REMAINS.



CASS NORTH COUNTY
COORDINATE SYSTEM
NAD 1983 1996 ADJ.
N = 311868.133
E = 519348.746

Statement of evidence for this corner location is on back of this page.

AMD 1/24/2022
GNA00002.00.00.01

I hereby certify that this plan, specification, or report was prepared by me or under my direct supervision and that I am a duly Licensed Land Surveyor under the laws of the State of Minnesota.

SIGNATURE Daniel A. Drusch DATE 3-31-2022 License Number 48249
DANIEL A. DRUSCH

Title: Land Surveyor Professional Engineer County Surveyor County Engineer

**Northeast Corner Section 18, Township 145 North, Range 27 West, 5th P.M.**

The DNR Land Survey Unit contacted the following offices for survey information on this corner:

Bureau of Land Management (BLM)
MN Secretary of State
Cass County Recorder, Auditor, Surveyor, and Highway Engineer
U.S. Forest Service
Itasca County Surveyor

1873 The U.S. General Land Office (GLO) survey notes and plat, on file in the MN Secretary of State's Office, describe this corner as a post, set in the swamp, from which:

Tamarack 5" diam bears S 11° E, 15 links
Tamarack 5" diam bears N 70° W, 33 links
Cedar 4" diam bears S 21 ½ ° W, 30 links
Cedar 6" diam bears N 12° E, 40 links

~1900 U.S. Forest Service Lake Winnibigoshish Reservoir map indicates corner monument was found.

1920 Civilian Conservation Corp's E. Hardy – Found squared wood stake. Place metal poster on 3" diam. Tamarack, N73E, 12 links.

1961 U.S. Forest Services' Morrison found old metal poster and placed a new poster on same tree.

2021 March, the DNR Land Survey Unit conducted a search for the corner and found the metal poster on the SE side of a fallen 6.5" diam. Tamarack. Dug and searched for the wood stake at the tie distance.....found bits and pieces of wood, but not definitive enough to claim it was evidence of the original stake. A GPS position was obtained at the location of the found wood pieces. This position was found to measure:

2661.846 feet (GLO = 2640 ft) from the East Quarter corner Section 18.

2910.354 feet (GLO = 2640 ft) from the North Quarter corner Section 17.

Analysis of the available information led me to accept the position of the found pieces of wood as the corner. Although the distance to the N ¼ corner of section 17 does not agree with GLO record distance, the found tie tree with metal poster is the best available evidence leading to the position of the corner.