



A000676873

OFFICE OF THE COUNTY RECORDER
 CASS COUNTY, MINNESOTA
 CERTIFIED, FILED, AND/OR
 RECORDED ON

9/17/2021 10:45:54 AM

AS DOC #: A000676873

PAGES: 2

REC FEES: 0.00

KATHRYN M. NORBY
 CASS COUNTY RECORDER

BY NG Dep TX#: 175320

CERTIFICATE OF LOCATION OF GOVERNMENT CORNER

I hereby certify that this survey, plan, or report was prepared by me or under my direct supervision and that I am a duly Licensed Land Surveyor under the laws of the State of Minnesota.

Patrick J. Sletten

Date: 9-02-2021 License No: 41002

Northeast Corner of Section 14, Township 140 N, Range 26 W, 5th P.M.

On 4-19-2021 found a 1/2" hexagonal bar, bent westward at top, witnessed at vertical position flush with ground and 6.5' east of driveway

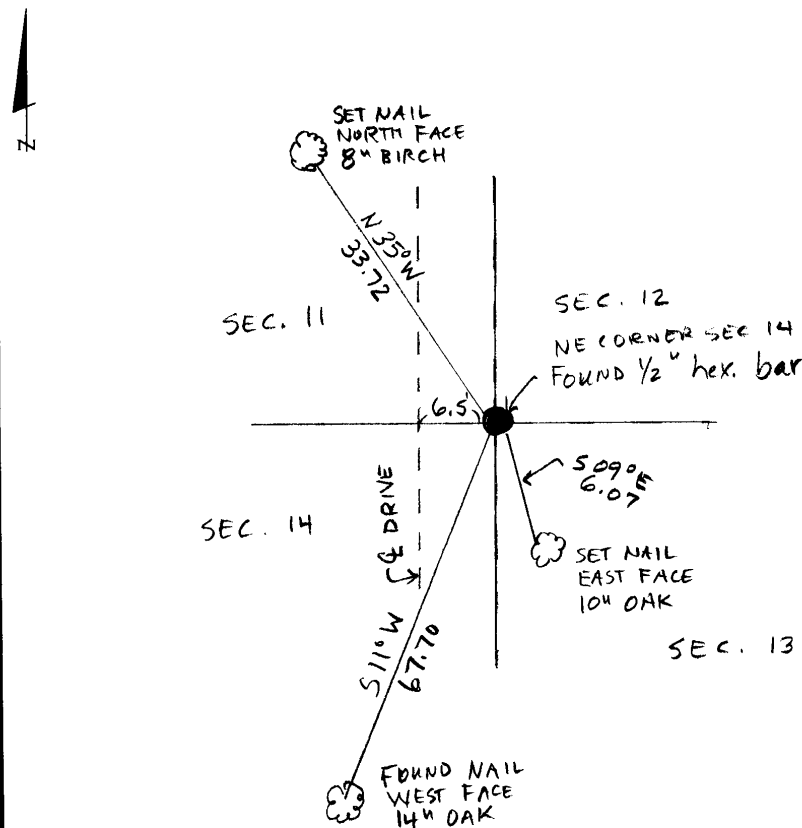
left monument as found, lowered monument, removed monument (explain)

On _____ placed a _____

SKETCH OF REFERENCE TIES

Not to Scale

Corner Index:
J.O-21.0



Statement of evidence for this corner position is on the back of this page

J.0-21.0

Statement of Evidence

**Northeast corner, Section 14, Township 140 North, Range 26
West, 5th Principal Meridian, Cass County, Minnesota**

1871 – Walker, Allen & Putnam, US Deputy Surveyors originally established this corner position while surveying interior lines of Township 140 North, Range 26 West. A wood post was set to mark the corner position with the following witnesses:

10" Sp. Pine	N 3° E	164 links
8" Fir	N 16° W	213 links
6" Aspen	S 34° E	48 links
3" Aspen	S 58° W	8 links

Information on file in the MN Historical Society, St. Paul, MN. Copies on file in the Cass County Highway Department/Surveyors Office (CCHD/SO).

1915 – John Greene, County Survey Record Book B. p. 526-527 found stump of the original NE tie to 10" Sp. Pine and the rotted original SE Aspen (Poplar).

8" Oak	S 54° W	145.3 feet
15" N. Pine	N 73° W	211.6 feet
10" N. Pine	S 30° E	181.7 feet

Information on file in the MN Historical Society, St. Paul, MN. Copies on file in the Cass County Highway Department/Surveyors Office (CCHD/SO).

1937/1938 – CCC in Book 6, page1 and Book 20, page 28 found 1/2" iron with 2" cap

1998– CCSO found 1/2" hexagonal bar (bent), witnessed at vertical position 5.5' east of driveway centerline, and established the following witnesses:

7" Oak	NE	23.98 feet
11" R. Oak	SE	102.93 feet
12" Oak	SW	67.28 feet

Information on file in the MN Historical Society, St. Paul, MN. Copies on file in the Cass County Highway Department/Surveyors Office (CCHD/SO).

2017– Terry Freeman, RLS 21367 shows monumented corner on Certificate of Survey.

2021 – Patrick Trottier found and accepted as corner a 1/2" hexagonal bar (bent), witnessed at vertical position 6.5' east of driveway centerline. Recovered SW tie (with nail) and found likely NE tie (w/o nail) and established additional witnesses as shown on the face of this survey.

County Coordinates (Cass County North NAD83/96)
Northing 152872.07
Easting 573499.35