



A000676872

OFFICE OF THE COUNTY RECORDER  
CASS COUNTY, MINNESOTA  
CERTIFIED, FILED, AND/OR  
RECORDED ON

9/17/2021 10:45:53 AM

AS DOC #: A000676872

PAGES: 2

REC FEES: 0.00

KATHRYN M. NORBY  
CASS COUNTY RECORDER

BY NG Dep TX#: 175320

## CERTIFICATE OF LOCATION OF GOVERNMENT CORNER

I hereby certify that this survey, plan, or report was prepared by me or under my direct supervision and that I am a duly Licensed Land Surveyor under the laws of the State of Minnesota.

*Patrick A. Frothe*

Date: 9-02-2021 License No: 41002

North Quarter Corner of Section 13, Township 140 N, Range 26 W, 5<sup>th</sup> P.M.

On \_\_\_\_\_ found a \_\_\_\_\_

left monument as found,  lowered monument,  removed monument (explain)

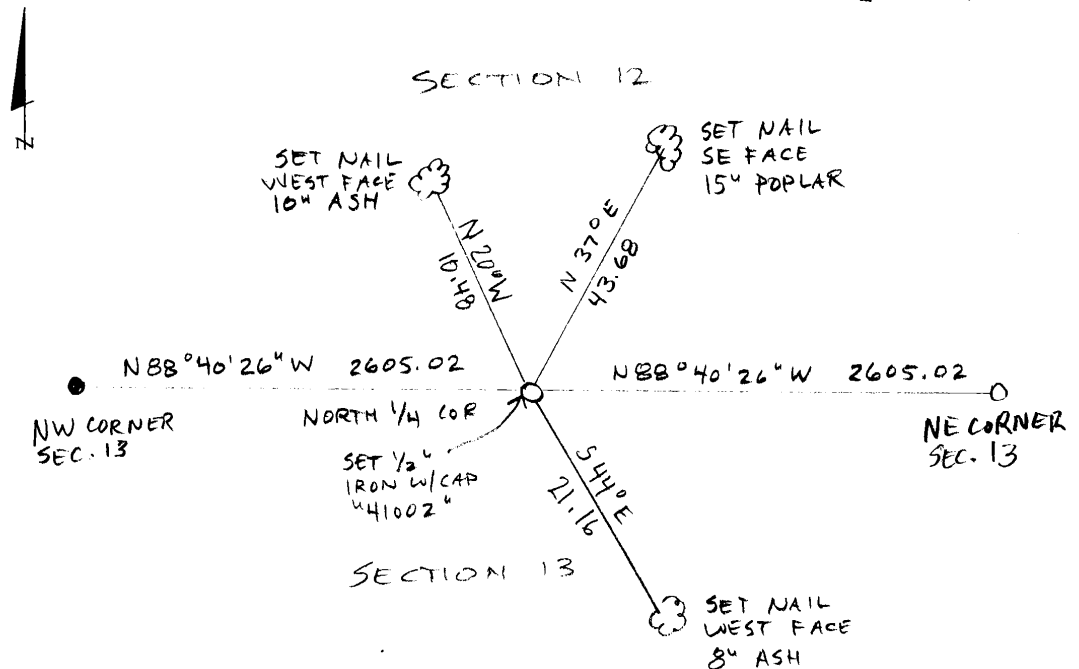
On 8-26-2021 placed a 1/2" x 18" iron pipe with plastic cap stamped "RLS 41002", flush with ground

### SKETCH OF REFERENCE TIES

Not to Scale

Corner Index:

J.O-23.0





**J.0-23.0**

**Statement of Evidence**

**North quarter corner, Section 13, Township 140 North, Range 26  
West, 5<sup>th</sup> Principal Meridian, Cass County, Minnesota**

1871 – Walker, Allen & Putnam, US Deputy Surveyors originally established this corner position while surveying interior lines of Township 140 North, Range 26 West. A wood post was set to mark the corner position with the following witnesses:

8" Fir N 29° E 18 links  
8" Elm SOUTH 4 links

Information on file in the MN Historical Society, St. Paul, MN. Copies on file in the Cass County Highway Department/Surveyors Office (CCHD/SO).

2021 – Patrick Trottier finds no evidence of corner. Establishes position by single proration between NW corner and NE corner of Section 13. Sets 1/2" x 18" iron pipe with plastic cap stamped "RLS 41002" as the perpetuation of the corner and establishes the witnesses as shown on the face of this drawing.

County Coordinates (Cass County North NAD83/96)  
Northing 152811.78  
Easting 576103.68