



A000676170

OFFICE OF THE COUNTY RECORDER
CASS COUNTY, MINNESOTA
CERTIFIED, FILED, AND/OR
RECORDED ON

8/27/2021 11:46:57 AM

AS DOC #: A000676170

PAGES: 2

REC FEES: 0.00

KATHRYN M. NORBY
CASS COUNTY RECORDER

BY KF Dep TX#: 174777

I HEREBY CERTIFY THAT THIS DOCUMENT AND THE DATA
CONTAINED HEREIN WAS PREPARED BY ME OR UNDER
MY DIRECT SUPERVISION.

Gary T. Carlson
GUY T CARLSON

8/20/2021
DATE

LICENSE NO. 40991

- LAND SURVEYOR PROFESSIONAL ENGINEER
- COUNTY SURVEYOR COUNTY ENGINEER

NAD 1983 (1996 HARN) CASS COUNTY NORTH ZONE COORDINATES
N= 279304.877 E= 596579.021 US SURVEY FT
(COORDINATES ARE SHOWN AS INFORMATION ONLY, SUBJECT TO VERIFICATION)

CERTIFICATE OF LOCATION OF GOVERNMENT CORNER

INDEX NO. J-15, NORTH QUARTER CORNER OF SECTION 15, TOWNSHIP 144, RANGE 25, 5TH P.M.
STATE OF MINNESOTA, COUNTY OF CASS

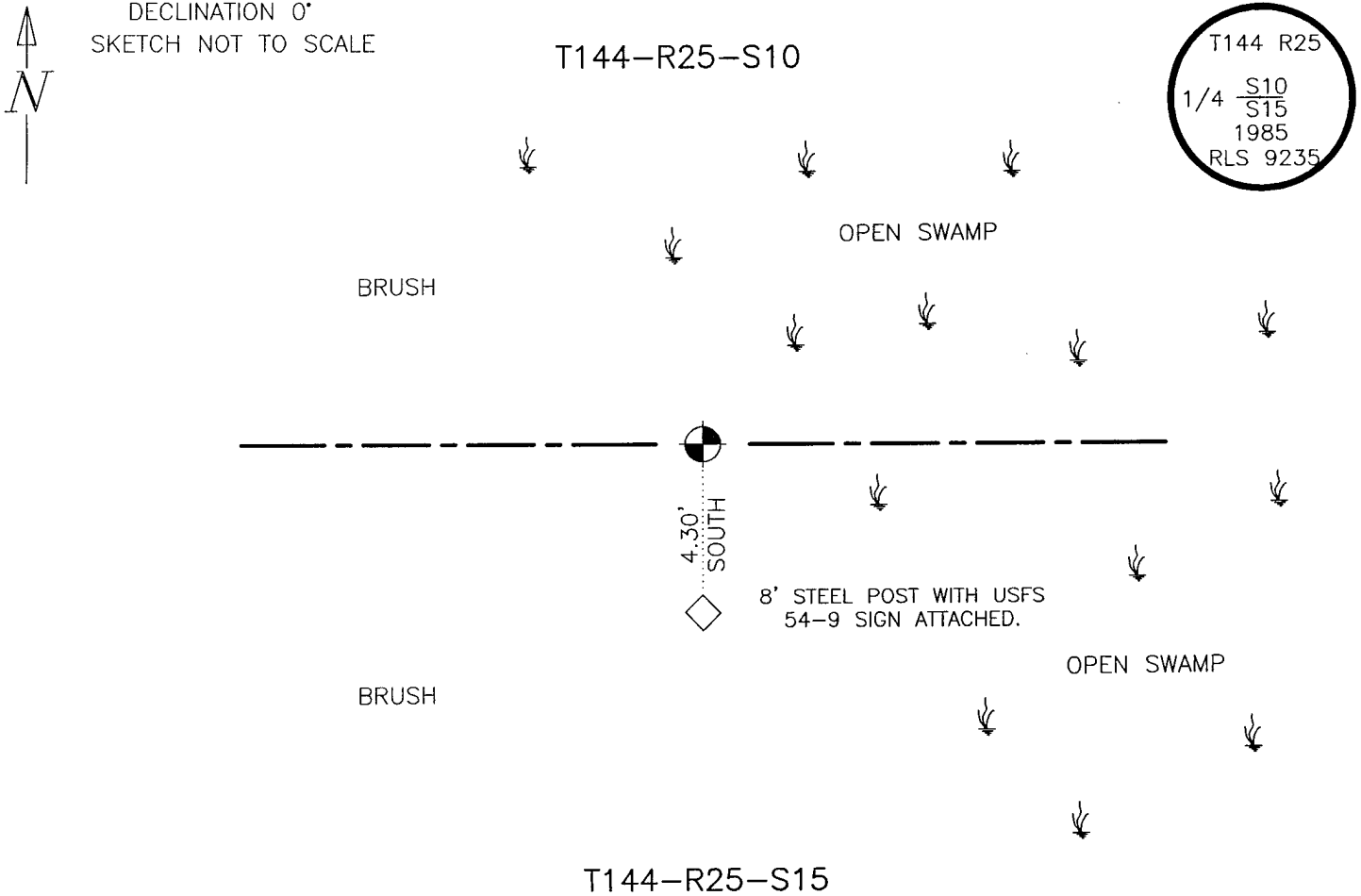
AT THE CORNER LOCATION SHOWN ON THE SKETCH:

- ON 7/14/2021 FOUND A(N) UNITED STATES FOREST SERVICE, ALUMINUM CAPPED, ALUMINUM ROD MONUMENT.
DATE
- LEFT MONUMENT AS FOUND, LOWERED MONUMENT, REMOVED MONUMENT (EXPLAIN)
- ON _____ DATE _____ PLACED A(N) _____

SKETCH OF REFERENCE TIES

DECLINATION 0°
SKETCH NOT TO SCALE

MONUMENT MARKED:



STATEMENT OF EVIDENCE RELATIVE TO THIS CORNER LOCATION IS ON BACK OF PAGE



STATEMENT OF EVIDENCE: Quarter Corner of Sections 10 and 15, Township 144 North, Range 25 West, of the 5th Principal Meridian.

1876; This corner was originally established by B.C. Baldwin, Deputy Surveyor under contract to the General Land Office (GLO), now the Bureau of Land Management (BLM). A copy of the plat of this township and hand copied field notes are on file in the Itasca County Surveyor's Office. These Field notes indicate a wood post was set to mark this corner position, which was witnessed by:

Tamarack,	6",	South 35° East,	11 links,	7.26 feet;
Tamarack,	4",	North 18° West,	6 links,	3.96 feet:

1900; (March) W.R. Caldwell of the United States Corps of Engineers (USACE) "found both witness trees standing - marks plain only one tree." He proceeded to tie this corner position into his stadia traverse. Field Book A1-223, page 74.

1985; (January) James Parker, LS 9235, of Advance Surveying performed a Dependent Resurvey of this Township. He failed to find any evidence of this corner position. He set a 5/8" by 8' long aluminum rod with a 3" stamped aluminum cap at an obliterated position using the USACE information. He filed a Certificate of Location of Government Corner with the Cass County Recorder. See Document #281710. This corner position was witnessed by:

Steel Fence Post,	South,	4.30 feet:
-------------------	--------	------------

2021; (July) Itasca County Department of Surveying and Mapping personnel T. Lasecki and W. Storm recovered the monument as set in 1984 up 36". The monument was driven flush with the ground and geodetic coordinates were collected on the monument. Township 144-25 Township Field Book 1, page 34. The recovered and established witnesses are as shown on the face of this document.

