



A000675848
OFFICE OF THE COUNTY RECORDER
CASS COUNTY, MINNESOTA
CERTIFIED, FILED, AND/OR
RECORDED ON
8/18/2021 4:11:33 PM
AS DOC #: A000675848
PAGES: 2
REC FEES: 0.00
KATHRYN M. NORBY
CASS COUNTY RECORDER
BY KF Dep TX#: 174515

Twp 140 Rge 28 Index No. P.0-13.0

CERTIFICATE OF LOCATION OF GOVERNMENT CORNER

East Quarter Corner of Section 21, Township 140 N., Range 28 W., 5th P.M.
State of Minnesota, County of Cass

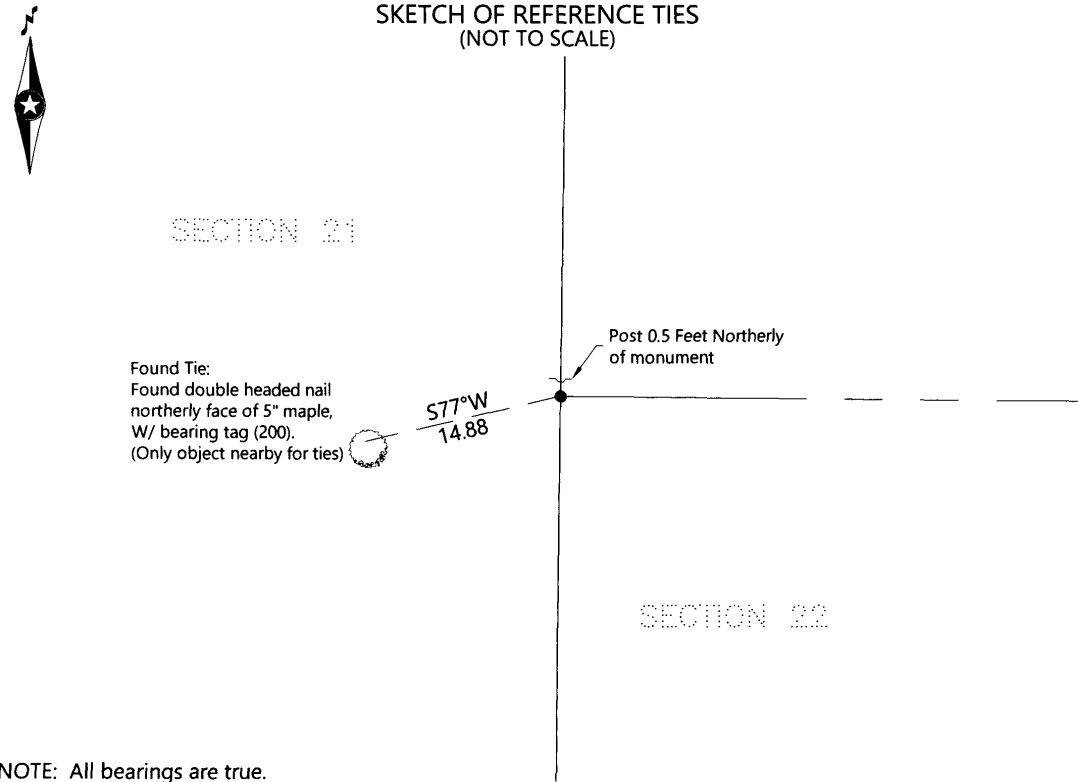
At the corner location shown on the sketch:

On 05-27-2021 found a 2 inch outside diameter iron pipe, up 1.5 feet,
with fence post 0.5 feet northerly.

left monument as found lowered monument removed monument (explain)

On _____ placed _____

SKETCH OF REFERENCE TIES (NOT TO SCALE)



NOTE: All bearings are true.

Statement of evidence relative to this corner location is on the back of this page.

I hereby certify that this survey, plan, or report was prepared by me or under my direct supervision and that I am a duly Licensed land Surveyor under the laws of the State of Minnesota. I further certify that this United States public land survey monument record is correct and complete to the best of my knowledge and belief.


Terry L. Freeman, Land Surveyor
Date 8/17/21 MN License No. 21367

Index No. P.0-13.0 **Index No. P.0- 13.0****STATEMENT OF EVIDENCE**

East Quarter corner Section 21, Township 140 North, Range 28 West, 5th Principal Meridian.

1870 O. Smith, General Land Office (GLO) Deputy Surveyor in the notes of the subdivision of Township 140 North, Range 28 West, set a post for the original corner and referenced it as follows: 6" White Pine S 70 ° W 31 Links, 5" Dry Birch N 40 ° E 8 Links Said records are on file with the Minnesota Historical Society, St. Paul, Minnesota, copies are filed with the Cass County Highway Department, Surveyor's Office (CCHD/SO).

1920 Ben Clark, Deputy County Surveyor in Book "C" P. 561 and Curo Book 167 P.66 shows he set corner 1x1x24" Iron Rod. Information on file in CCHD/SO

1941 CCC notes at Washburn Lake Forestry Station in Book 14, P. 17 show they set approximate 4" Aspen Stake Information on file in CCHD/SO.

1979 Walter E. Curo, RLS 11395 in Curo Book 167 P. 82 shows he found corner while performing a survey in G.L. 1, Sec.21 and G.L. 5, Sec. 22. Information on file in CCHD/SO

2000 Cass County Land Dept. personnel AR and JL found 2" iron pipe up 1.5 feet and marked a BT tag on 5" Maple S 77 degrees W 14.84 feet. Information on file in CCHD/SO.

2014 Terry L. Freeman, RLS 21367 shows found corner while performing a survey in G.L. 1, Sec.21. Information on file in CCHD/SO

2018 Terry L/Freeman, RLS 21367 shows found corner while performing a survey in G.L. 8, Sec.21 Information on file in CCHD/SO

2018 Mark T. Downing, RLS 46165 shows found corner while performing a survey in G.L. 8, Sec.21. Information on file in CCHD/SO

2021 A Northern Engineering and Consulting, Inc survey crew found 2" iron pipe, up 1.5 feet and Maple BT from 2000 and a "U" shaped fence post North 0.5 feet.

The monument recovered and established references for the position are shown on the face of this document.

Analysis of the recovered record data, field evidence and survey measurements, indicates that the monument found by Northern Engineering and Consulting, Inc. in 2021 is the accepted location of this corner.

County Coordinates (NAD88, Cass County North Zone, 2011 adj.)

Northing 145191.970
Easting 500264.057