



A000675041
OFFICE OF THE COUNTY RECORDER
CASS COUNTY, MINNESOTA
CERTIFIED, FILED, AND/OR
RECORDED ON
7/28/2021 11:58:59 AM
AS DOC #: A000675041
PAGES: 2
REC FEES: 0.00
KATHRYN M. NORBY
CASS COUNTY RECORDER
BY KF Dep TX#: 173852

Twp 140 Rge 25 Index No. G.0-5.0

CERTIFICATE OF LOCATION OF GOVERNMENT CORNER

East Quarter Corner of Section 7, Township 140 N., Range 25 W., 5th P.M.
 State of Minnesota, County of Cass

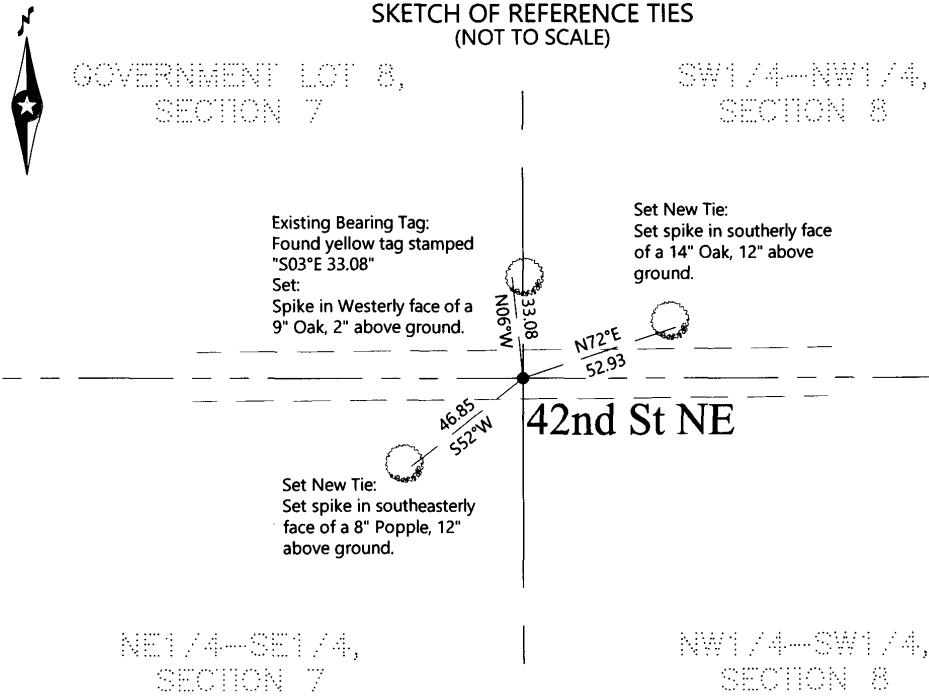
At the corner location shown on the sketch:

On 3-31-2021 found 3/4 Inch Pipe with Broken Cap, Down 2 Inches

left monument as found lowered monument removed monument (explain)

On _____ placed _____

SKETCH OF REFERENCE TIES
(NOT TO SCALE)



NOTE: All bearings are true.

Statement of evidence relative to this corner location is on the back of this page.

I hereby certify that this survey, plan, or report was prepared by me or under my direct supervision and that I am a duly Licensed land Surveyor under the laws of the State of Minnesota. I further certify that this united States public land survey monument record is correct and complete to the best of my knowledge and belief.


 Terry L. Freeman, Land Surveyor
 Date 7/26/21 MN License No. 21367

Index No. G.0- 5.0**STATEMENT OF EVIDENCE**

East Quarter corner Section 7, Township 140 North, Range 25 West, 5th Principal Meridian.

Oct. 1867 O.E. Garrison, General Land Office (GLO) Deputy Surveyor in the notes of the subdivision of Township 140 North, Range 25 West, set a post for the original corner and referenced it as follows: 5" White Pine N 31 ° E 11 Links 8" Birch S 51 ° W 9 Links

Said records are on file with the Minnesota Historical Society, St. Paul, Minnesota, copies are filed with the Cass County Highway Department, Surveyor's Office (CCHD/SO).

Nov. 1910 M. Watson, Smokey Hollow Township Road Order, on file in the CCHD, shows a road on the east to west ¼ line of sections 7 through 10, beginning at the ¼ corner of sections 10 and 11.

1914 Guy Todd, Deputy County Surveyor in Book "B" P. 407-412 shows he found the old Government Pine BT. He set a 4x4x48 inch White Pine stake 10" White Pine N 31 ° W 22.30 Also in Curo Book 98, P. 128-130
Information on file in CCHD/SO

1916 Alois Nowak, Assistant Engineer in Book "B" P. 328-333 indicate he found Pine Post set by Todd. Also in Curo Book 55 P. 54-55
Information on file in CCHD/SO

1937 CCC notes at Washburn Lake Forestry Station in Book 1, P. 40 show they set approximate post 80 chains E. of W ¼ corner

1956 DNR- Minnesota Forest Service map in Township file in CCHD/SO indicate corner on map

2021 A Northern Engineering and Consulting, Inc survey crew found ¾" iron with broken cap down 2".

The monument recovered and established references for the position are shown on the face of this document.

Analysis of the recovered record data, field evidence and survey measurements, indicates that the monument found by Northern Engineering and Consulting, Inc. in 2021 is the accepted location of this corner.

County Coordinates (NAD88, Cass County North, 2011 ADJ.)

Northing 155231.813
Easting 584001.924

