



A000675038
OFFICE OF THE COUNTY RECORDER
CASS COUNTY, MINNESOTA
CERTIFIED, FILED, AND/OR
RECORDED ON
7/28/2021 11:58:56 AM
AS DOC #: A000675038
PAGES: 2
REC FEES: 0.00
KATHRYN M. NORBY
CASS COUNTY RECORDER
BY KF Dep TX#: 173852

Twp 140 Rge 25 Index No. J.0-7.0

CERTIFICATE OF LOCATION OF GOVERNMENT CORNER

North Quarter Coner of Section 17, Township 140 N., Range 25 W., 5th P.M.
State of Minnesota, County of Cass

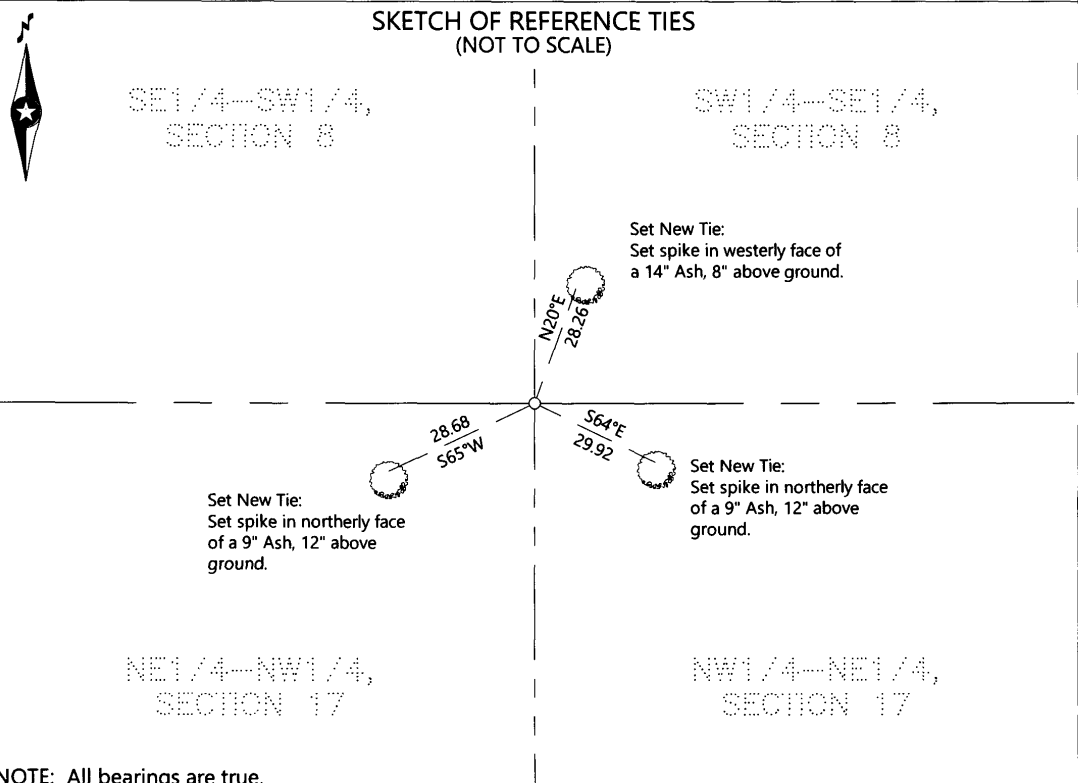
At the corner location shown on the sketch:

On 3-31-2021 found No evidence of an existing corner

- left monument as found
- lowered monument
- removed monument (explain)

On 3-31-2021 placed 1/2" I.D. Pipe with cap stamped LS#21367, Down 4 Inches

SKETCH OF REFERENCE TIES (NOT TO SCALE)



NOTE: All bearings are true.

Statement of evidence relative to this corner location is on the back of this page.

I hereby certify that this survey, plan, or report was prepared by me or under my direct supervision and that I am a duly Licensed land Surveyor under the laws of the State of Minnesota. I further certify that this united States public land survey monument record is correct and complete to the best of my knowledge and belief.

Terry L. Freeman
Terry L. Freeman, Land Surveyor
Date 7/26/21 MN License No. 21367

Index No. J.0- 7.0**STATEMENT OF EVIDENCE**

North Quarter corner Section 17, Township 140 North, Range 25 West, 5th Principal Meridian.

Oct. 1867 O.E. Garrison, General Land Office (GLO) Deputy Surveyor in the notes of the subdivision of Township 140 North, Range 25 West, set a post for the original corner and referenced it as follows: 5° White Pine N 39 ¼ ° W 7 Links 8° White Pine 56 1 ½ ° W 14 Links.

Said records are on file with the Minnesota Historical Society, St. Paul, Minnesota, copies are filed with the Cass County Highway Department, Surveyor's Office (CCHD/SO).

1914 Guy Todd, Deputy County Surveyor in Book "B" p. 407-412 found both old Government B,TS and set 4x4x36" stake. Also in Curo Book 98, p. 124.
On file in CCHD/SO

1937 CCC notes at Washburn Lake Forestry Station Book 2, p. 66 show at 2640 from east set approximate corner.

2021 A Northern Engineering and Consulting, Inc survey crew computed corner position from 1914 Todd notes. Found no evidence of corner. Set corner obliterated using Todds distance from the north and topographic calls from original survey being the center line of creek to the east and edge of wetland to the west.

The monument recovered and established references for the position are shown on the face of this document.

Analysis of the recovered record data, field evidence and survey measurements, indicates that the monument set by Northern Engineering and Consulting, Inc. in 2021 is the accepted location of this corner.

County Coordinates (NAD88, Cass County North, 2011 ADJ.)

Northing	152687.632
Easting	586667.075

